

Learning for Careers: The Pathways to Prosperity Network

An AYPF and JFF Capitol Hill Forum

Friday, December 1, 2017



American Youth
Policy Forum



JOBS FOR THE FUTURE



#PtoPNetwork

#PtoPNetwork

@AYPF_Tweets

@DEDeptofEd

@jfftweets

@DelmarvaConnect

@hgse

@DrMarkBrainard



American Youth
Policy Forum



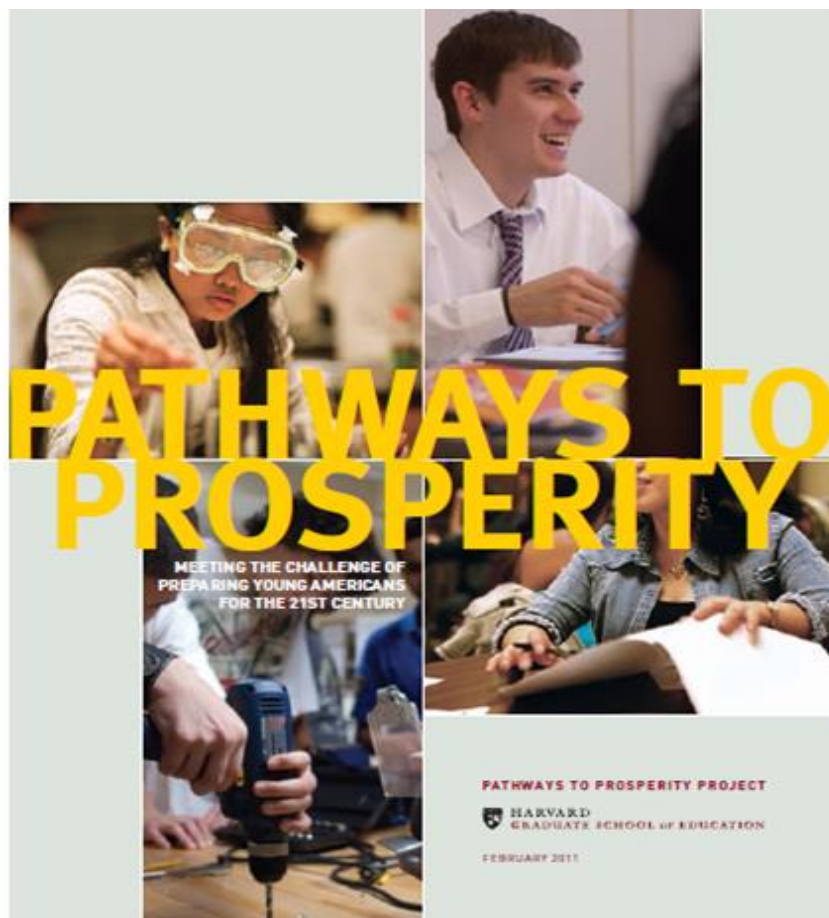
JOBS FOR THE FUTURE

Learning for Careers: The Pathways to Prosperity Network

AMERICAN YOUTH POLICY FORUM
WASHINGTON, DC
DECEMBER 1, 2017

THE PATHWAYS TO PROSPERITY REPORT

PATHWAYS TO PROSPERITY

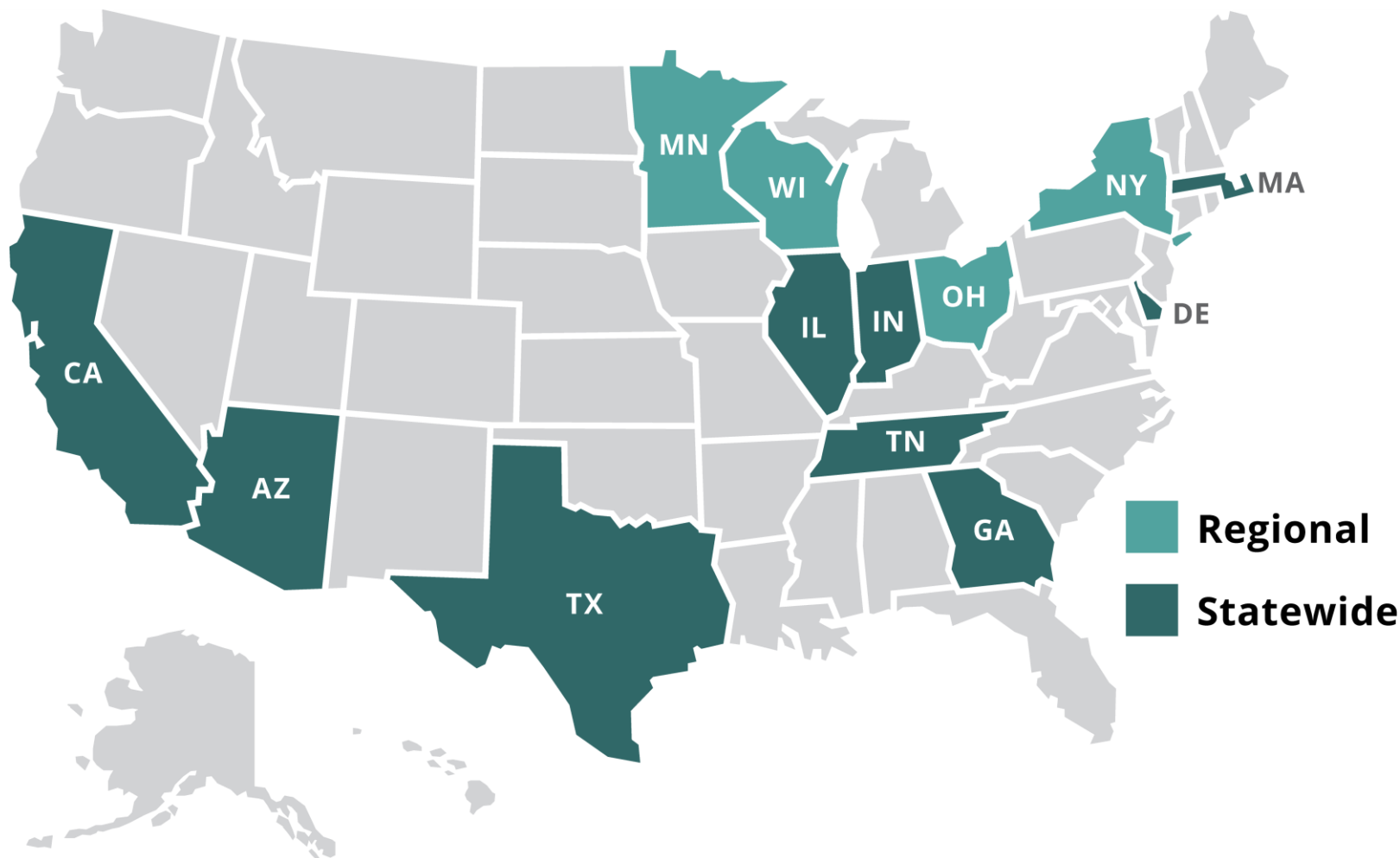


“The American system for preparing young people to lead productive and prosperous lives as adults is clearly badly broken. Failure to aggressively overcome this challenge will surely erode the fabric of our society.”

Harvard Graduate School of Education, 2011

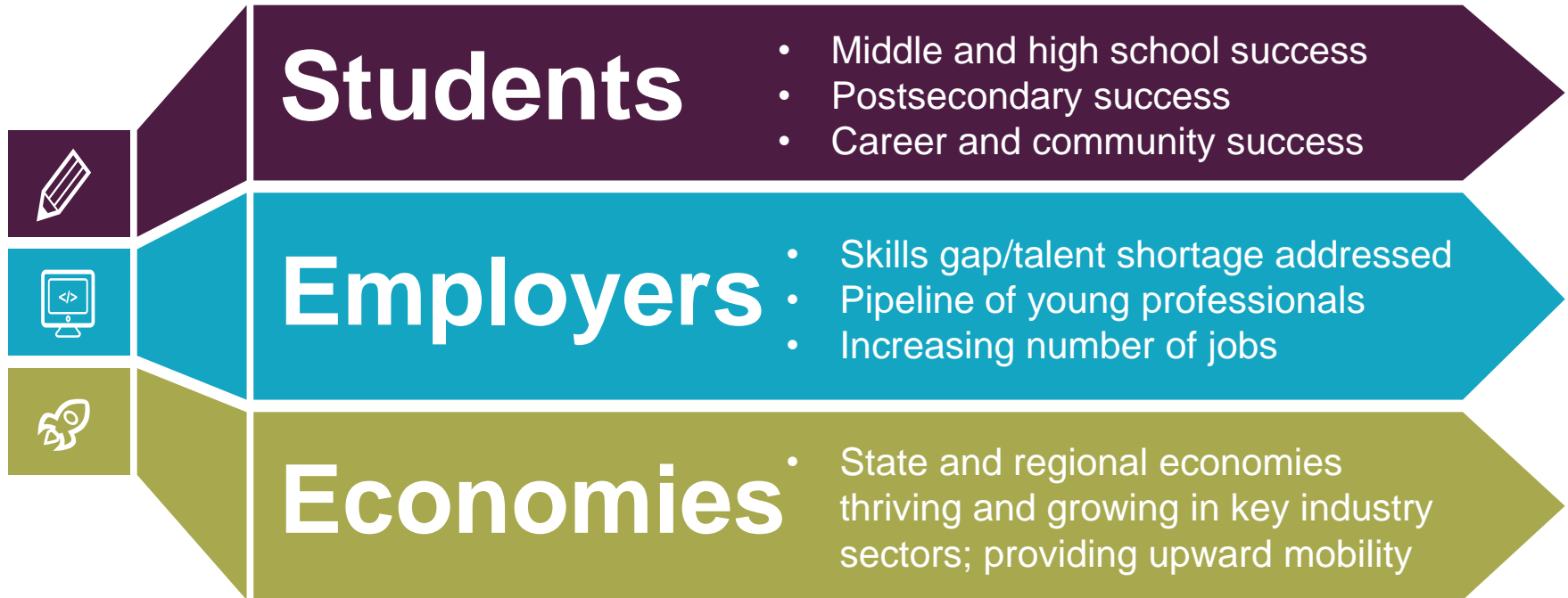
THE NETWORK

PATHWAYS TO PROSPERITY



OUR VISION FOR TRANSFORMING OUTCOMES

PATHWAYS TO PROSPERITY



KEY IMPLEMENTATION LEVERS

PATHWAYS TO PROSPERITY



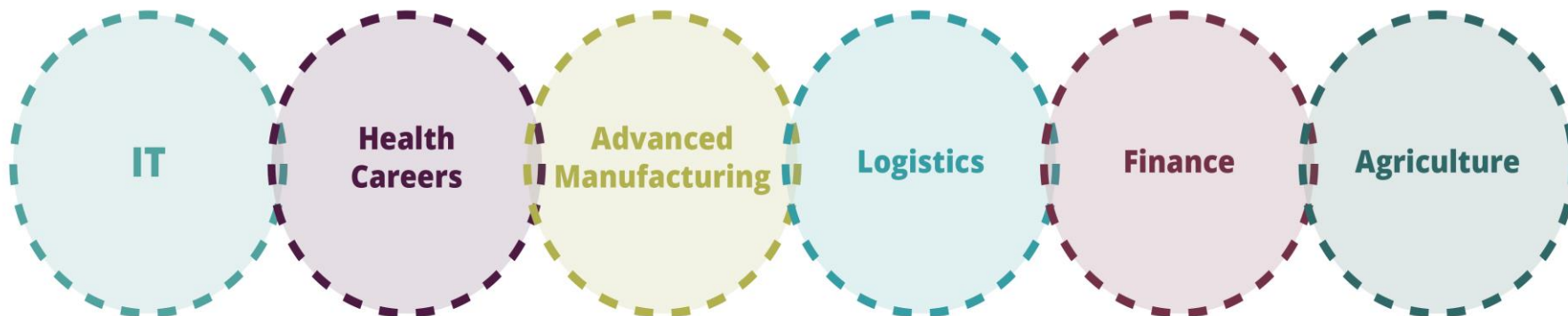
MOST PREVALENT INDUSTRY SECTORS

PATHWAYS TO PROSPERITY

Paths must be
carefully chosen to
ensure mobility

Solving real-world
problems facing
businesses

High-tech driven in
occupations such as
agribusiness and
agriscience



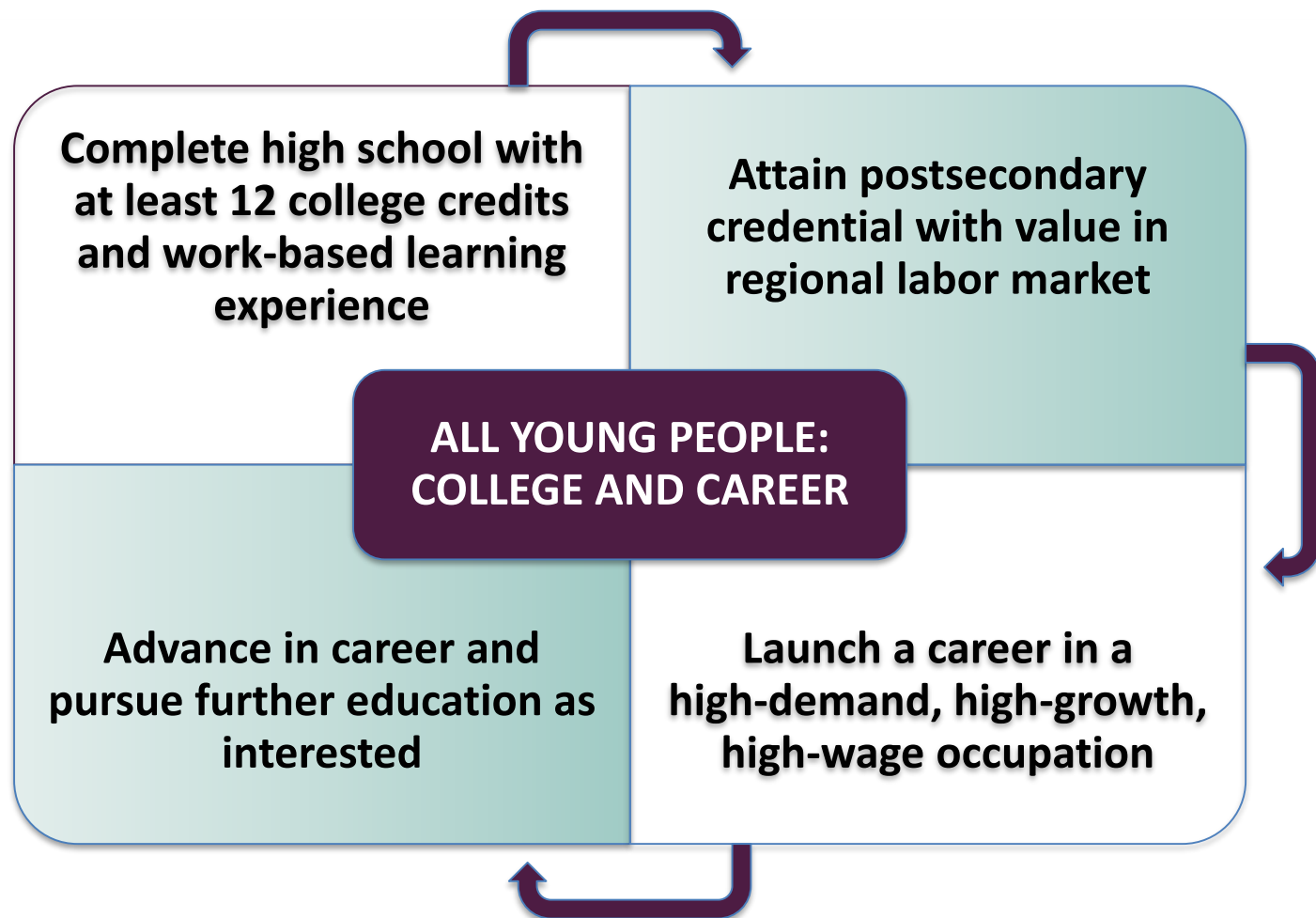
Cross-cutting and key
to all 21st century
careers, not just in IT
fields

Few know the
opportunities and
salaries

Financial literacy is a
foundational skill for
all sectors and
occupations

OUR GOAL: SYSTEMS OF GRADES 9-14+ COLLEGE AND CAREER PATHWAYS

PATHWAYS TO PROSPERITY



CAREER PATHWAYS MOVEMENT

PATHWAYS TO PROSPERITY

ADVANCE CTE
State Leaders Connecting Learning to Work

**LINKED
LEARNING**®

NAF BE FUTURE
READY



**HIGH
SCHOOLS
THAT
WORK**

**NATIONAL
GOVERNORS
ASSOCIATION**

**PATHWAYS
TO PROSPERITY**

**YOUTH CAREERCONNECT
STEM**

California Department of
EDUCATION

CCSSO
Council of Chief State School Officers

NC3T
NATIONAL CENTER
FOR COLLEGE & CAREER TRANSITIONS

NCPN
National Career Pathways Network

PLTW
PROJECT LEAD THE WAY

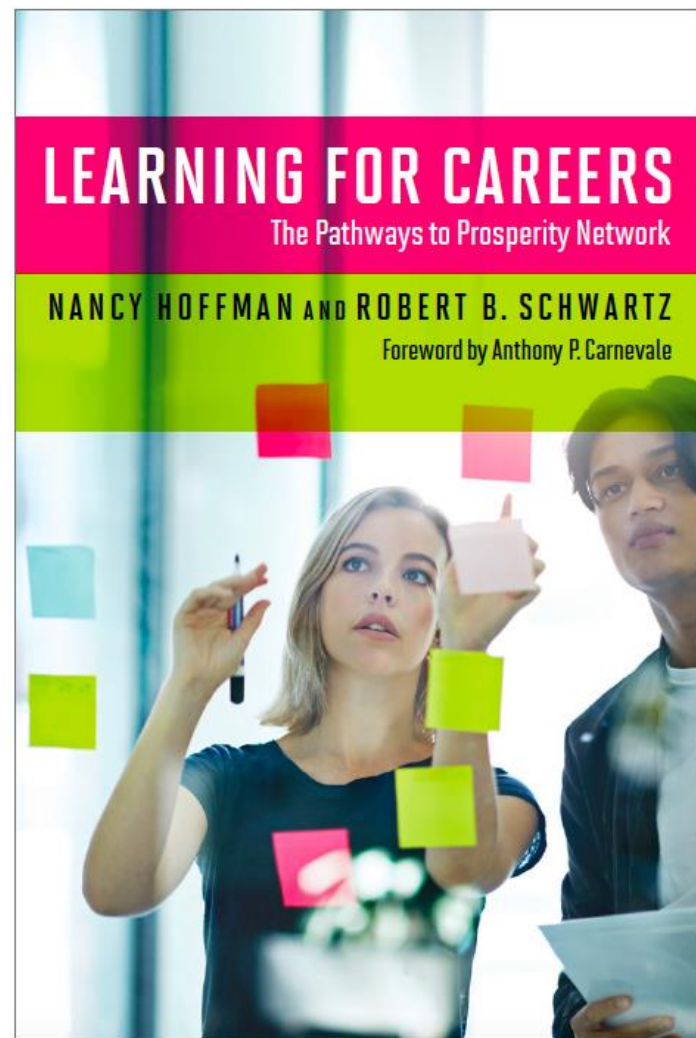
P-TECH
Pathways in Technology
Early College High School

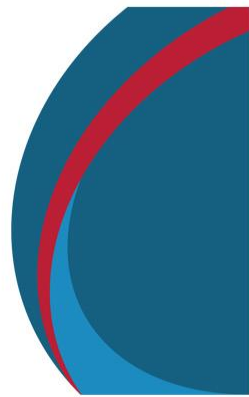
NEW SKILLS FOR YOUTH
JPMORGAN CHASE & Co.

“Why do so many young Americans struggle to find their place in the world of work?...Valuable for policy-makers is that this book examines key implementation levers, through which governments can facilitate genuine engagement of employers and intermediate organisations, that are so critical to success. All in all, *the book is a story of how career and technical education can be elevated from a last resort to a first choice for young people.*”

-Andreas Schleicher

Director for Education and Skills, OECD





Delaware Pathways

A MEMBER OF THE
PATHWAYS TO PROSPERITY NETWORK



LABOR MARKET

PATHWAYS TO PROSPERITY

Career Cluster	% of Middle Skill Jobs	% of High Skill Jobs	Growth Rate	Average Wage
All Delaware	33%	29%	8.1%	\$49,520
Health Science	37%	49%	15.4%	\$63,320
Information Technology	25%	75%	13.2%	\$86,953
Human Services	24%	42%	13.1%	\$34,850
Architecture & Construction	52%	10%	12.7%	\$48,452
Education & Training	7%	93%	10.2%	\$55,372
Finance	36%	50%	9.2%	\$72,418
Hospitality & Tourism	35%	<5%	8.9%	\$23,957

Delaware Pathways (14 total)



Allied Health



Computer Science



Nurse Assistant



Energy Technology



Teacher Academy



Finance



Culinary & Hospitality

Source: Delaware Department of Labor, Employment Projections & Wage Data, 2016



JOBS FOR THE FUTURE

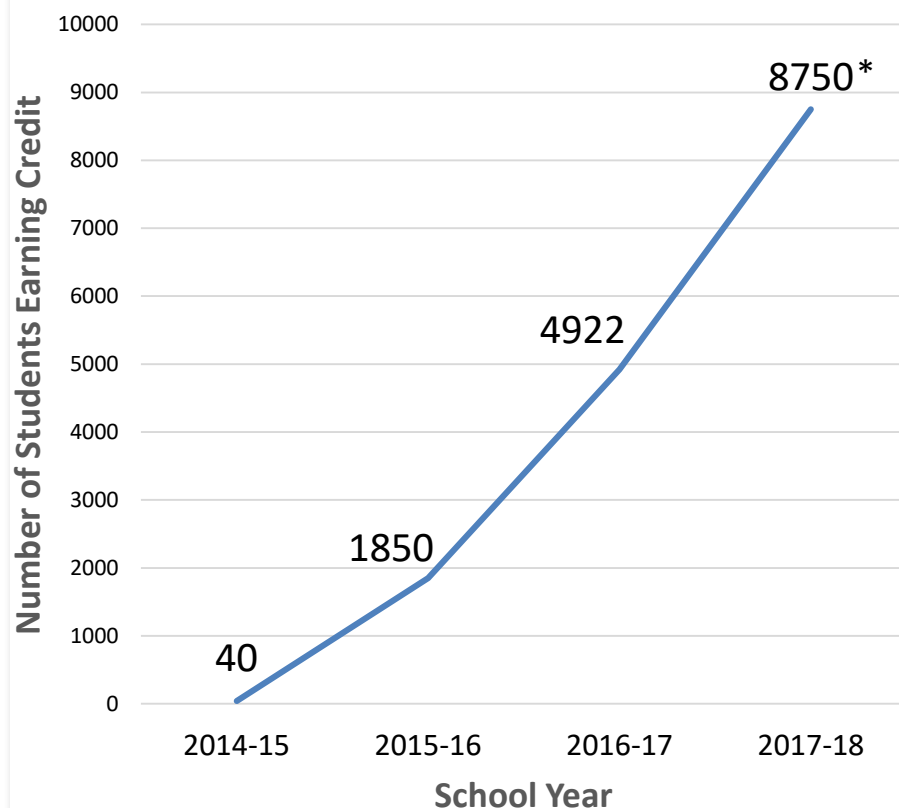


HARVARD
GRADUATE SCHOOL OF EDUCATION

DELAWARE PATHWAYS ENROLLMENT

PATHWAYS TO PROSPERITY

**Delaware Pathways Student Participation,
School Years 2014-15 to 2017-18**



*Projected Participation (students earning credit)

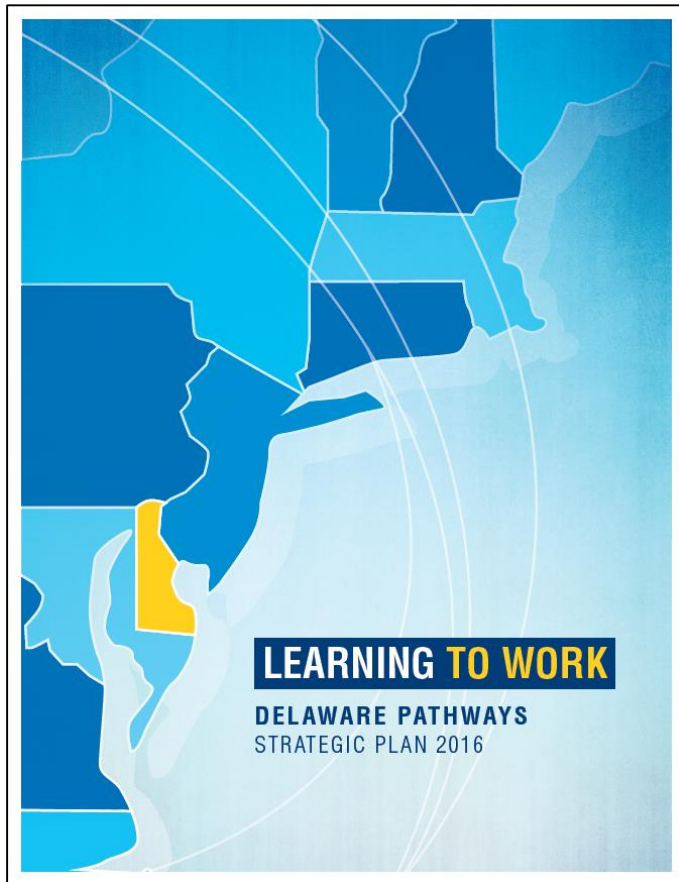
**Delaware Pathways Participation Profile,
School Year 2016-17**

		Subgroup Number	Subgroup Percent
All Students		4,922	100%
Gender	Female	2,049	42%
	Male	2,873	58%
Race/ Ethnicity	Hispanic	656	13%
	African American	1,558	32%
	White	2,349	48%
	Asian	200	4%
	Multiracial	132	3%
	Other	27	<1%
Special Populations	Special Education	593	12%
	EL	135	3%
	Low Income	1,242	25%

Source: Delaware Department of Education, Enrollment & Transcript Data, 2017

PRIORITY AREAS

PATHWAYS TO PROSPERITY



Delaware
Department of
Education

Build a career preparation system that aligns to the state and regional economies

Delaware Technical
Community College

Scale and sustain meaningful work-based learning experiences

Delaware
Department of
Labor

Integrate our education and workforce development efforts

United Way of
Delaware & Rodel
Foundation

Coordinate financial support across various sectors

Delaware Workforce
Development Board

Engage employers, educators, and service providers

#PtoPNetwork

@AYPF_Tweets

@DEDeptofEd

@jfftweets

@DelmarvaConnect

@hgse

@DrMarkBrainard



American Youth
Policy Forum



JOBS FOR THE FUTURE