

Linking Health, Education, and Communities to Change Lives and Achieve Equity



Alex Briscoe, Director
Alameda County Health Care Services Agency

December 8, 2014

AYPF Study Tour to Oakland: Engaging School and Community in Meeting the Needs of the Common Core State Standards



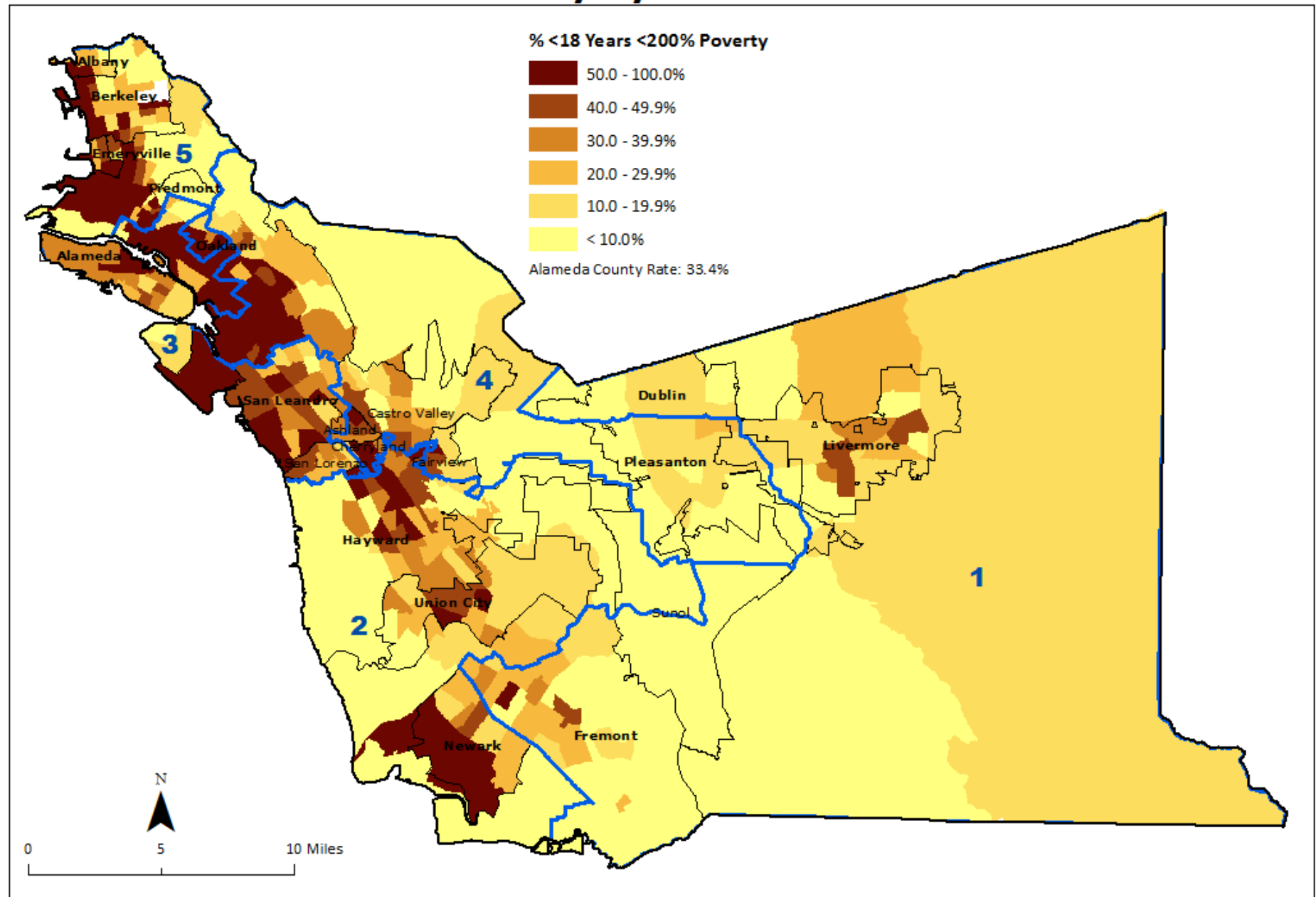
Alameda County
Health Care Services Agency



Our Leadership Challenge

Many Alameda County children, youth, and families still live, attend schools, and work in low opportunity neighborhoods that have profound and long-term impacts on their health, education, and economic well-being.

Children Under 200% Poverty by Census Tract



Race, Place, and Income Affect Health

Compared to a White child in the affluent Oakland Hills,
an African American born in West Oakland is...

1.5 times more likely
to be born premature
or low birth weight

2.5 times more likely
to be behind in
vaccinations

5 times more likely
to be hospitalized
for diabetes

7 times more likely
to be born into
poverty

4 times less likely
to read at grade
level

2 times more likely
to die of heart
disease

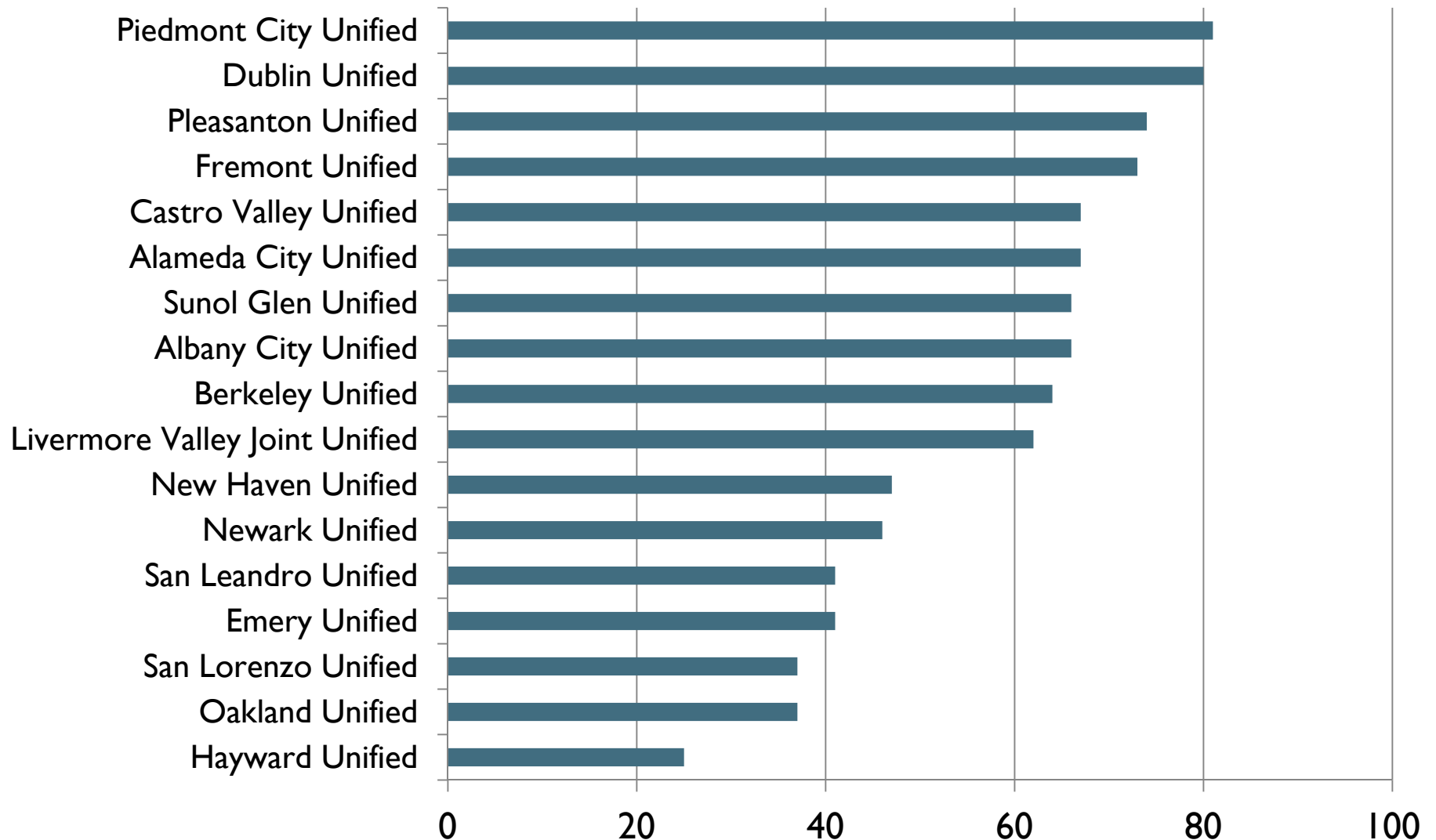
INFANT

CHILD

ADULT

Cumulative impact:
15-year difference in life expectancy

3rd Grade Academic Performance by School District (% At or Above Proficient, 3rd Grade ELA)



Source: CAPE with data from CDE 2012-13

Linking Health and Education Community Schools as a Strategy

Alameda County Community School Framework

Community schools are a comprehensive approach to transforming Alameda County public schools into centers of community that create the conditions for all children and their families to thrive.

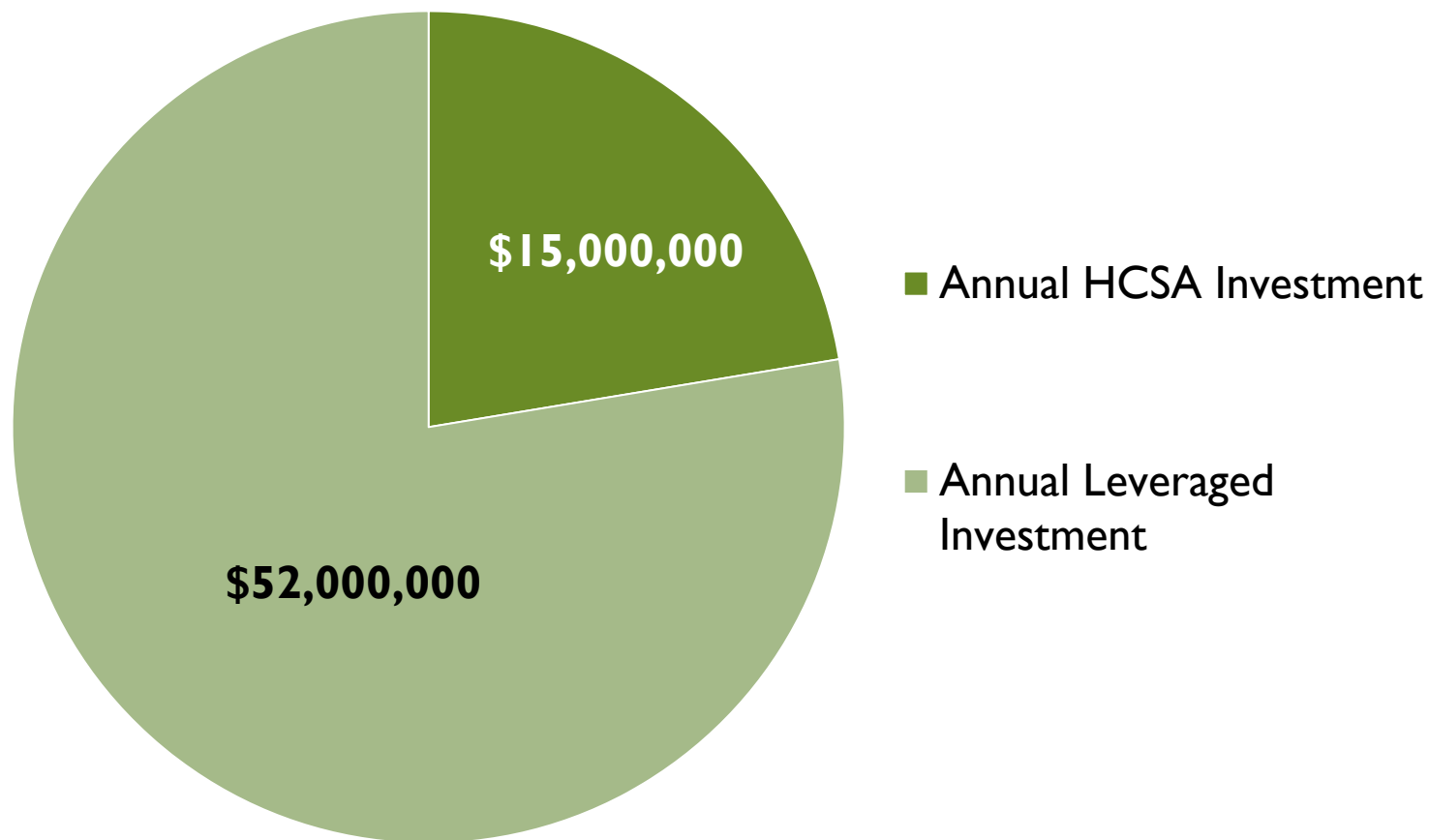
Since 1996, Health Care Services Agency has been collaborating with districts, schools, and other partners to build a cornerstone of the community school approach – health and wellness.





We envision a county where all youth graduate from high school healthy and ready for college and career

County HCSA Investment



**\$67 Million of annual investments
in health and wellness continuum**

Improved Health Improves Education Outcomes

Community Schools Research Base

Whole Child Approach/ Child Development

- James Comer
- Jacquelynne Eccles
- Werner/Benard

Youth Development and Out-of-School-Time

- Reginald Clark
- Milbrey McLaughlin
- Deborah Vandell, NIOST, NSLA

Parental Involvement

- Joyce Epstein
- A. Henderson & K. Mapp

School Change

- Anthony Bryk

Coordinated Services

- Joy Dryfoos

Health-Learning Links...

- Charles Basch

New Research on Links between Health and Educational Achievement

Charles Basch identified causal links between 7 health issues and educational achievement:

1. Poor vision
2. Asthma
3. Teen Pregnancy
4. Aggression and Violence
5. Physical Inactivity
6. ADHD
7. Hunger (especially insufficient breakfast)

How We Support Community Schools in Oakland & Alameda County

Healthy Schools & Communities Framework



Equity Lens: Placed-Based Strategies by Region

NORTH COUNTY

- 6 School Health Centers
- 12 School-Based Behavioral Health Initiative
- 4 Youth & Family Opportunity Hubs

MID-COUNTY/EDEN AREA

- 2 School Health Centers
- 15 School-Based Behavioral Health Initiative
- 3 Youth & Family Opportunity Hubs

TRI-CITIES

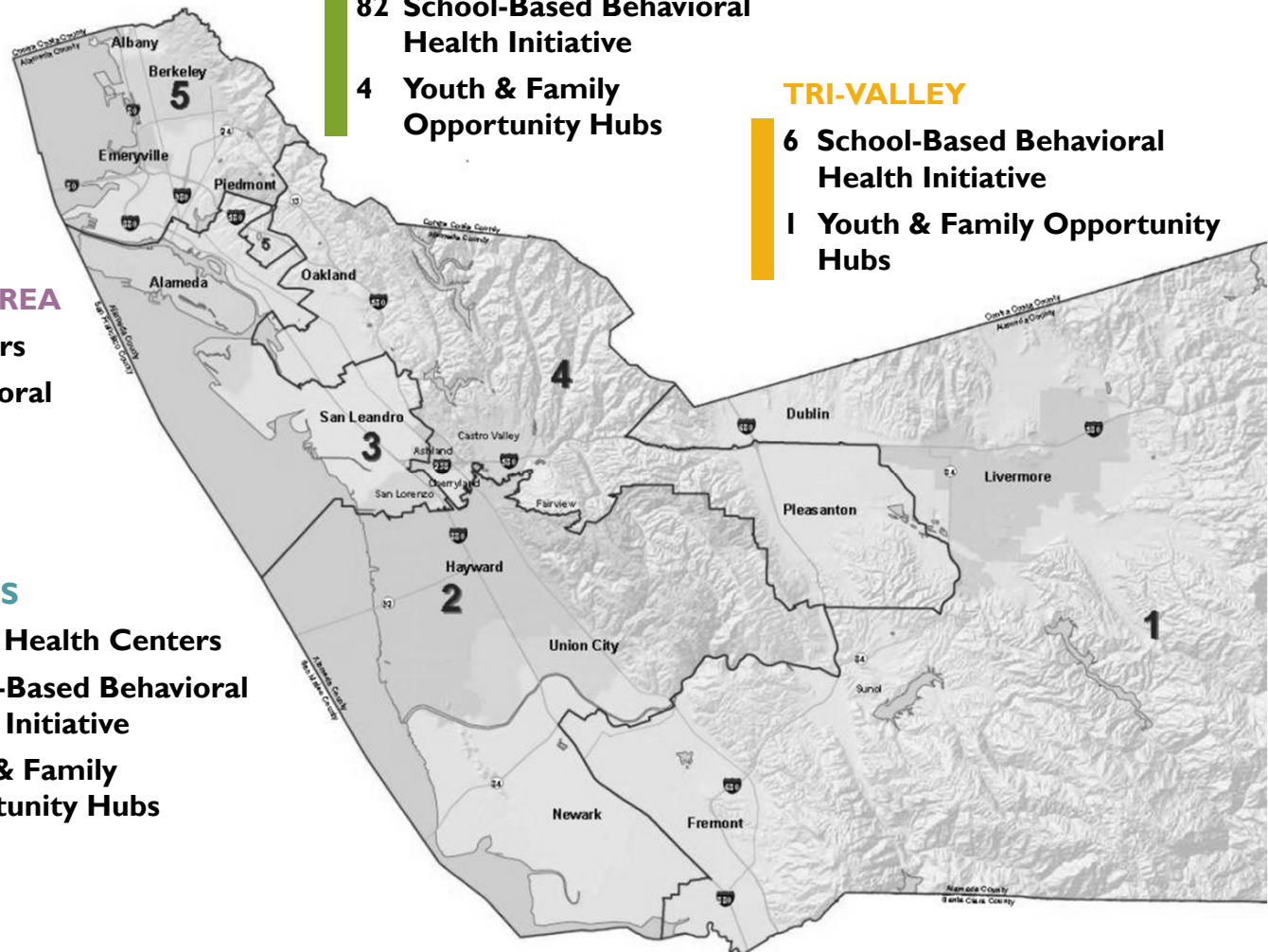
- 1 School Health Centers
- 14 School-Based Behavioral Health Initiative
- 5 Youth & Family Opportunity Hubs

OAKLAND

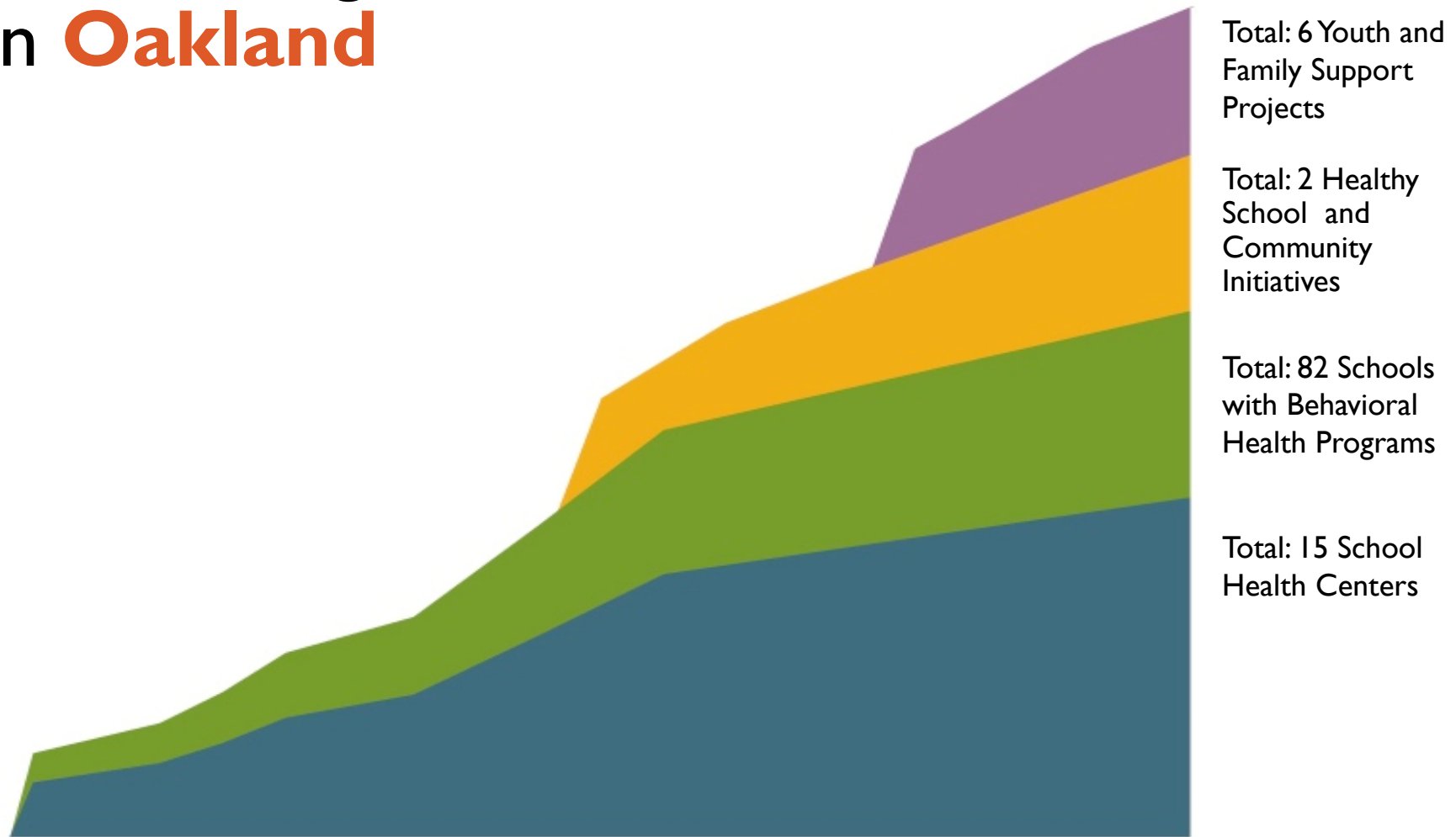
- 15 School Health Centers
- 82 School-Based Behavioral Health Initiative
- 4 Youth & Family Opportunity Hubs

TRI-VALLEY

- 6 School-Based Behavioral Health Initiative
- 1 Youth & Family Opportunity Hubs



CHSC Programs & Initiatives in **Oakland**



The County makes an annual investment of over \$24 million dollars to support the foundation and rollout of a full-service community school district and city

Health Clinic

**Youth
Development**

Medical

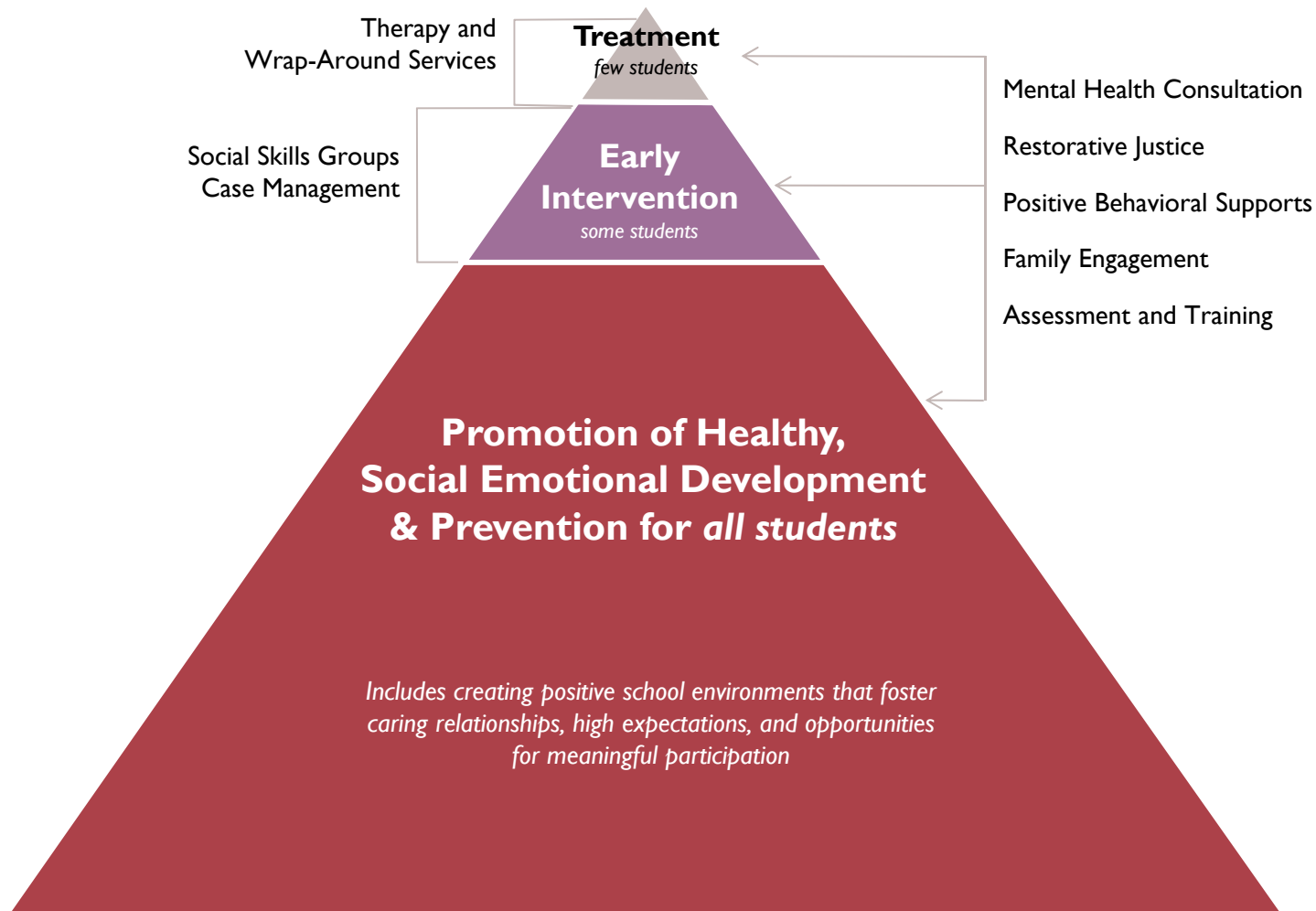
Dental

**Health
Education**

**Behavioral
Health**

Alameda County School Health Center Model

School-Based Behavioral Health Model



Connecting Kids to Coverage Initiative

Eligibility and enrollment into health coverage and public benefits

- Outreach: To parents, families, school & district staff, community partners
- Accessible Enrollment Opportunities: “One-Stop” opportunities for families to enroll at the CFRC, additional opportunities at school sites
- Data-Sharing: Targeting outreach to children and families who appear eligible for programs and/or have recently “fallen off” programs
- Partner Collaboration: With school health centers, school-based behavioral health providers, & others

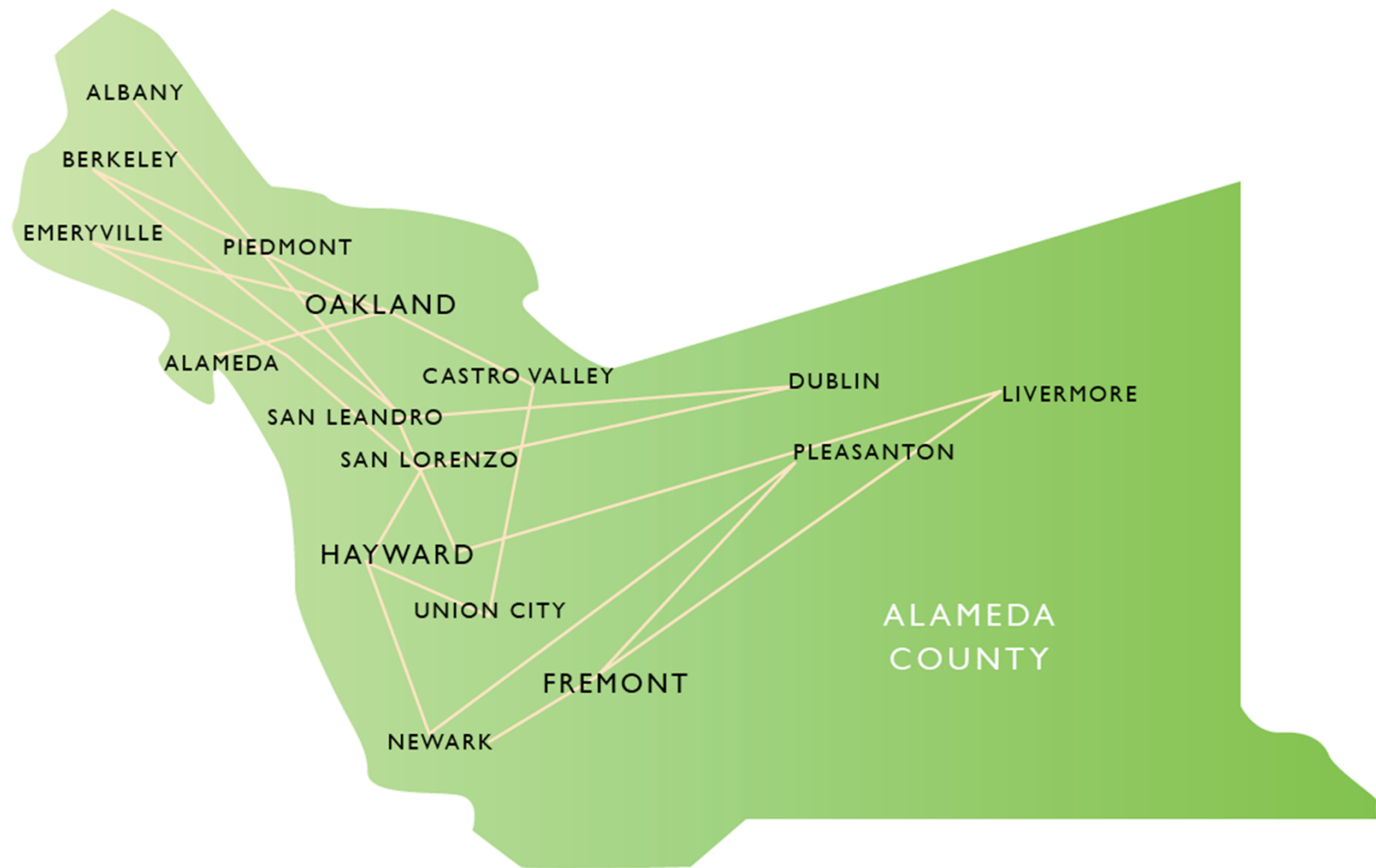
Emergency Medical Services Corps

The EMS Corps is a highly selective, rigorous academy that prepares young men for careers in emergency medical services

- Life-Coaching
- Mental Health
- Case Management
- Community Service
- Mentorship
- Academic Tutoring
- Physical Training



Why The Partnerships Work



We have built a network of partners who work to ensure all youth in the county have access to the supports and opportunities they need to thrive.

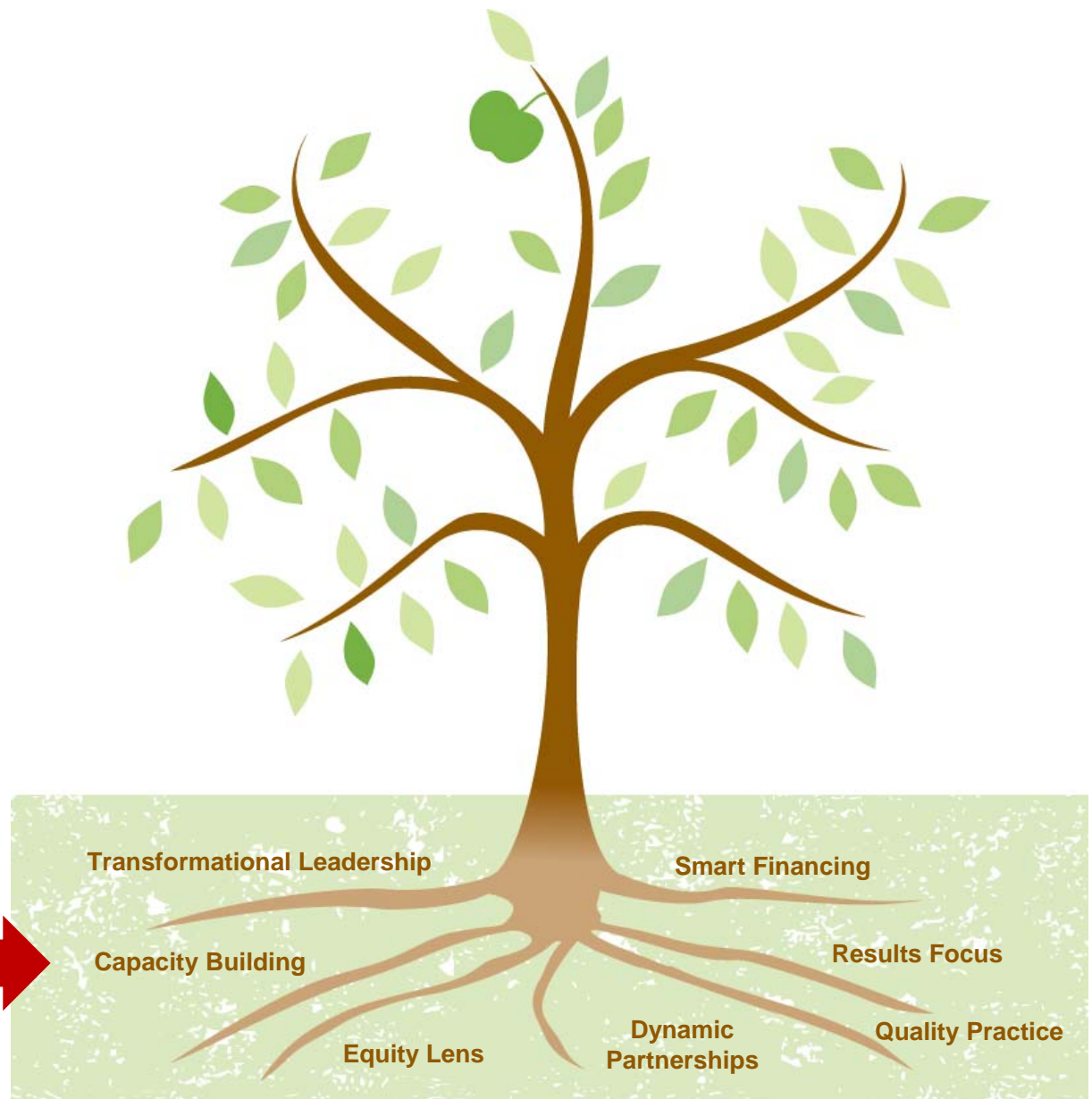
Public Sector Partnership: Why it Works

- Entrepreneurial spirit
- Financial sophistication
- Organizational humility
- Deep respect for site-based leadership
- An authentic belief in the positive wisdom and intelligence of children and families
- Careful and aggressive advocacy

Your Leadership Role

**What we've
learned...**

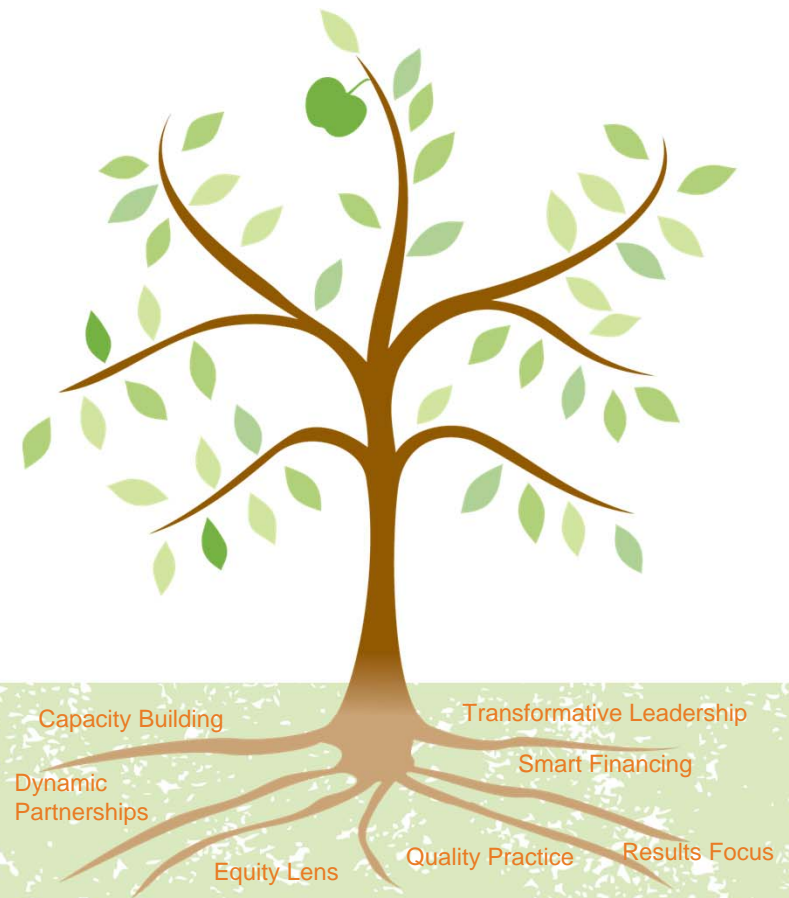
**Pay
attention to
the Roots!**



Transformative Leadership

Systems change happens when leaders at all levels think and act across boundaries, challenge assumptions and the status quo, and work creatively to solve problems and advance a health- and education-equity agenda.

Thinking and acting
beyond boundaries.



Develop the “Roots”

- Advocate for Equity
 - Apply an equity formula to resource decisions
- Be Creative with Financing
 - Blend funding for universal access to physical & behavioral health care
- Build Dynamic Partnerships
 - Partner around linked learning and career pathways
- Invest in Capacity Building and Quality Practice
 - Fund Community Schools Coordinators & other coordination infrastructure
 - Culturally relevant practices in health and education services

Alex Briscoe, Director
Alameda County Health Care Services Agency

