

Key Program Components

- Transitional Living (TL) Specialists have extremely high levels of training and supervision
- Caseloads of only 8-10 young adults per TL Specialist
- A minimum of 1 session per week conducted in the community or as frequently as needed
- 24/7 on call support to TL participants
- Average length of stay in the program is 7-9 months



Program Evaluation and Outcome Data

- Client satisfaction surveys are administered every 2 months
- After discharge, follow-up surveys are conducted at 6,12 and 24 months to collect data in the following areas:
 - Maintenance of stable housing
 - Educational attainment
 - Employment
 - Social support/basic life skills
 - Criminal/legal involvement



Transitional Living Program

Information through September 2013

Founded in 1999 with a grant from The Day Foundation, the Transitional Living Program is still supported through private donations including continuing support from The Day Foundation, the employees of Youth Villages (through the Our Family Campaign), and grants from other generous supporters. In 2007, the Tennessee Department of Children's Services partnered with Youth Villages and the Day Foundation to reach more youth across the state. We have expanded the program to serve youth in six states (Tennessee, Mississippi, North Carolina, Massachusetts, Florida and Georgia)

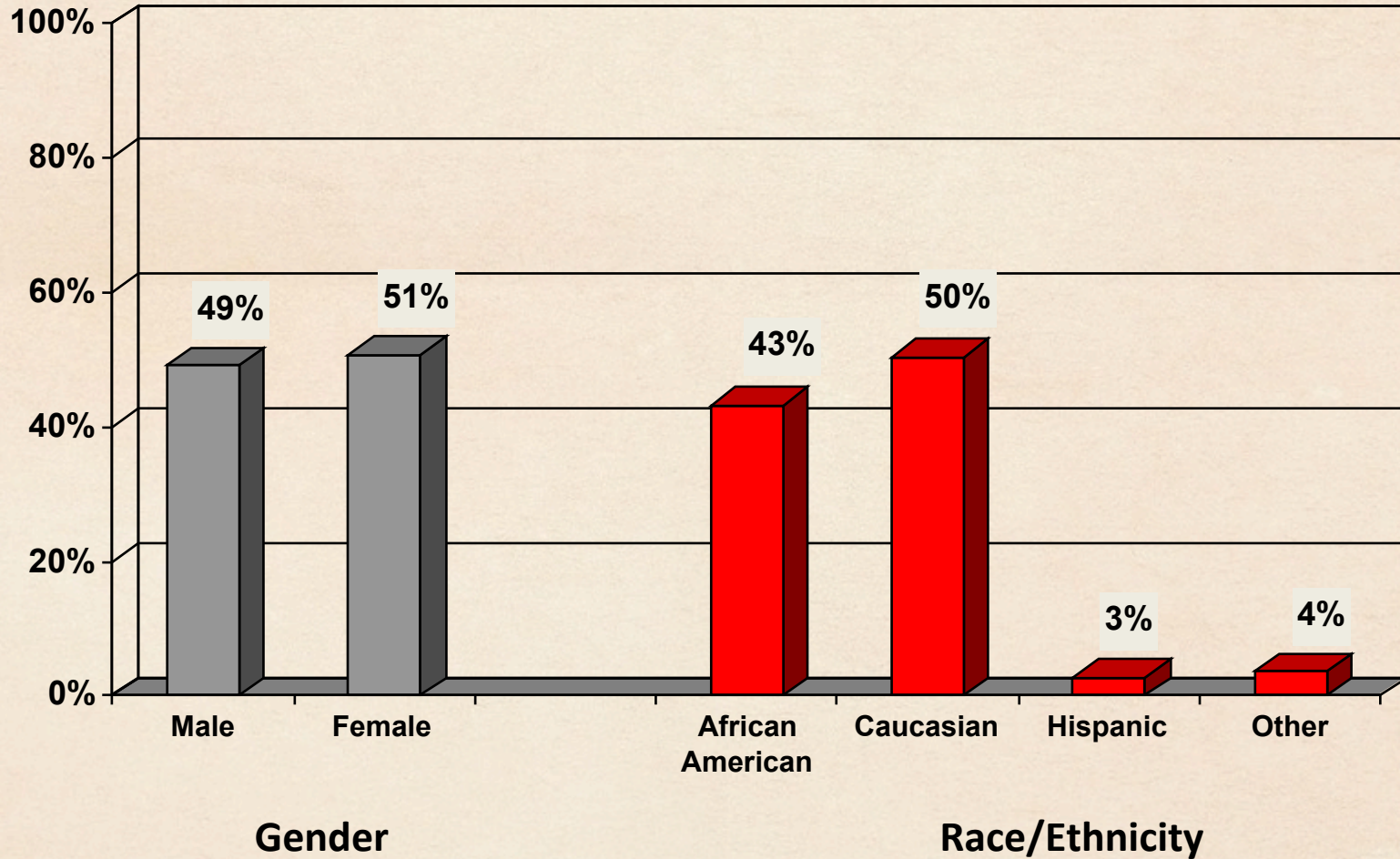


Transitional Living Program

Demographics

Through September 2013

N = 6,367

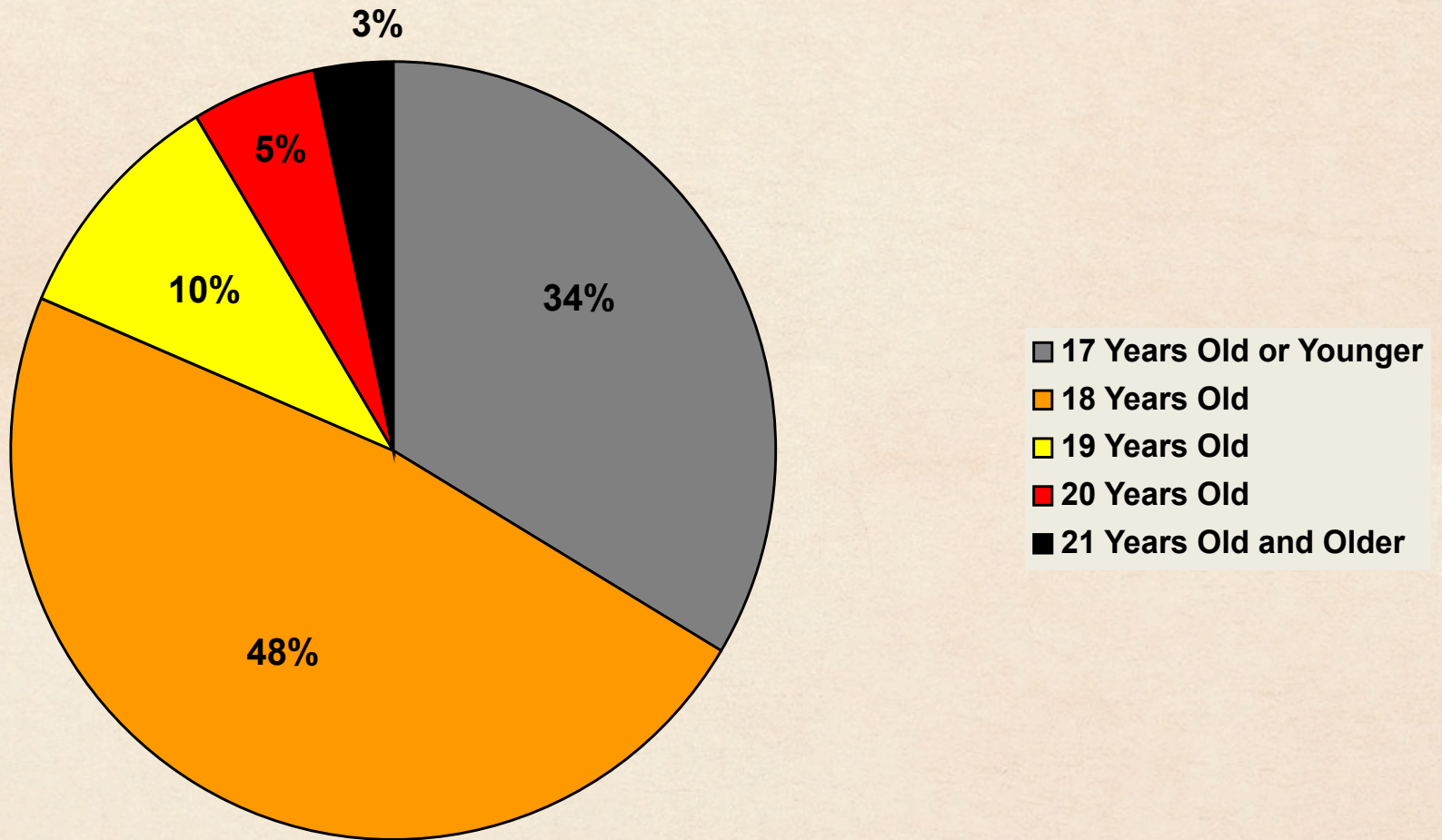


Transitional Living Program

Age at Admission

Through September 2013

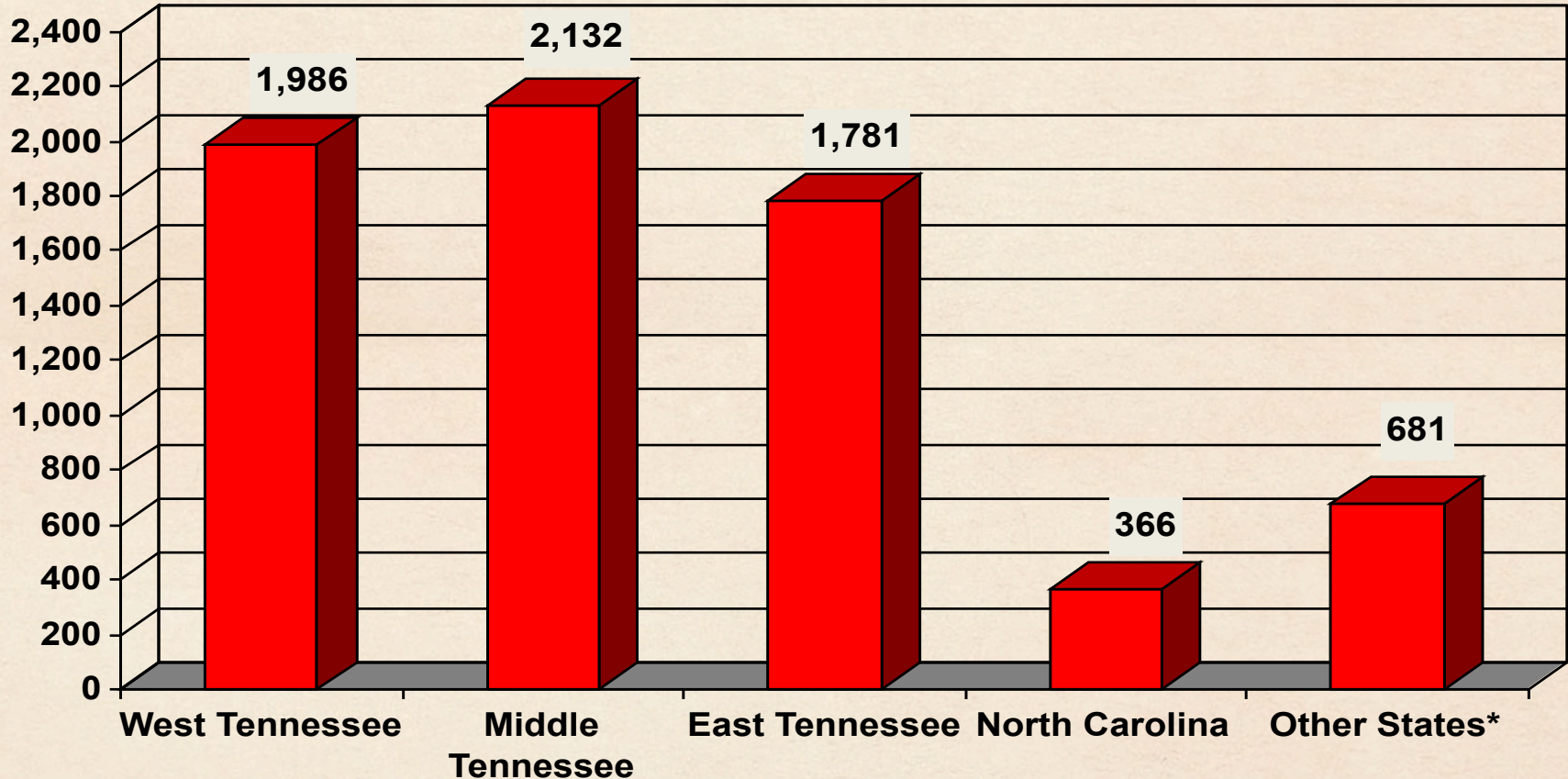
N = 6,367



Transitional Living Program

Youth Served by Region

July 2000 through September 2013



Youth may be served in multiple regions

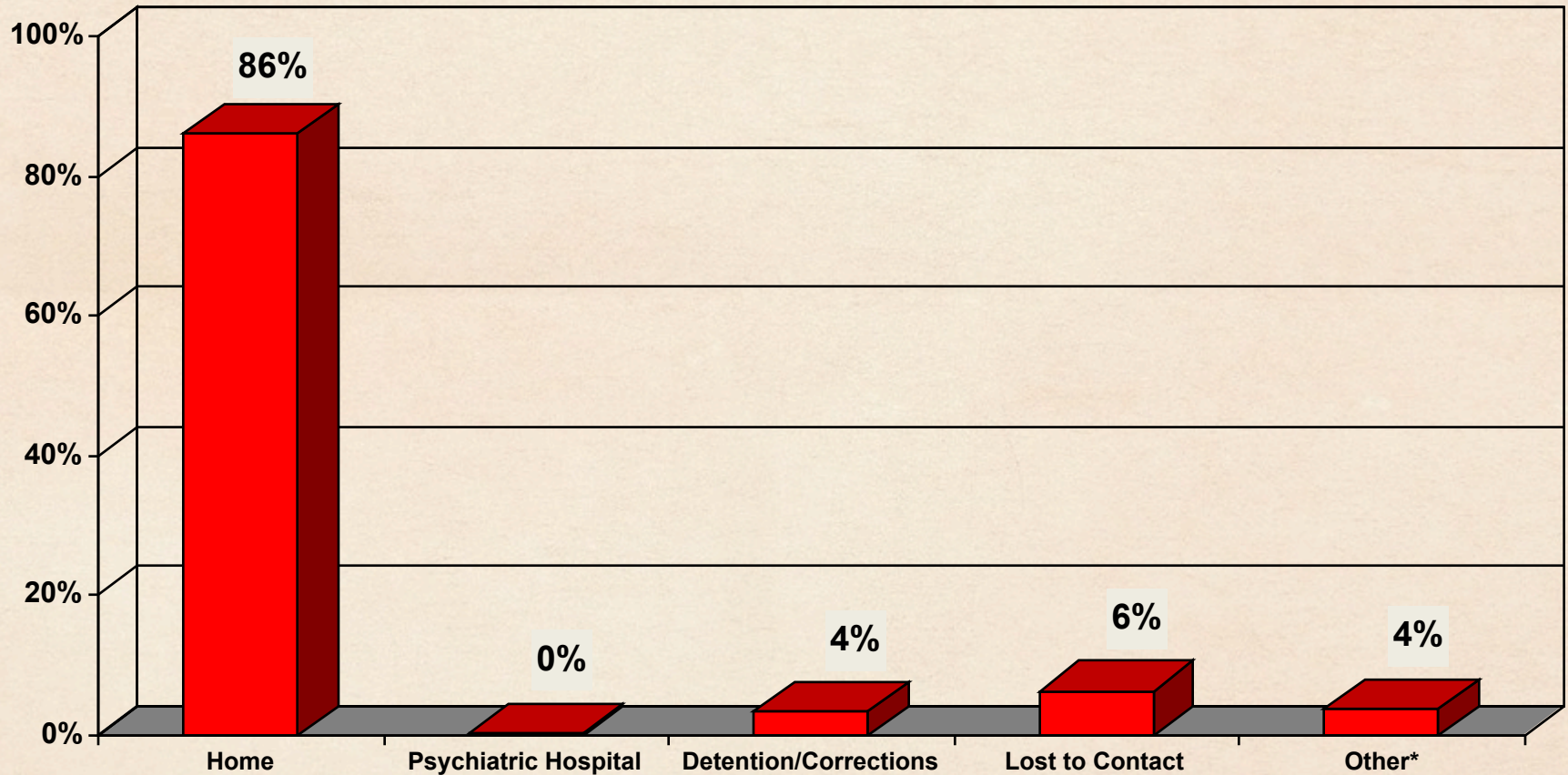
* includes youth served in Alabama, Florida, Mississippi, Texas, Washington, DC, Georgia, and Massachusetts

Transitional Living Program

Discharge Location

Youth discharged July 2002 through September 2013

N = 5,210



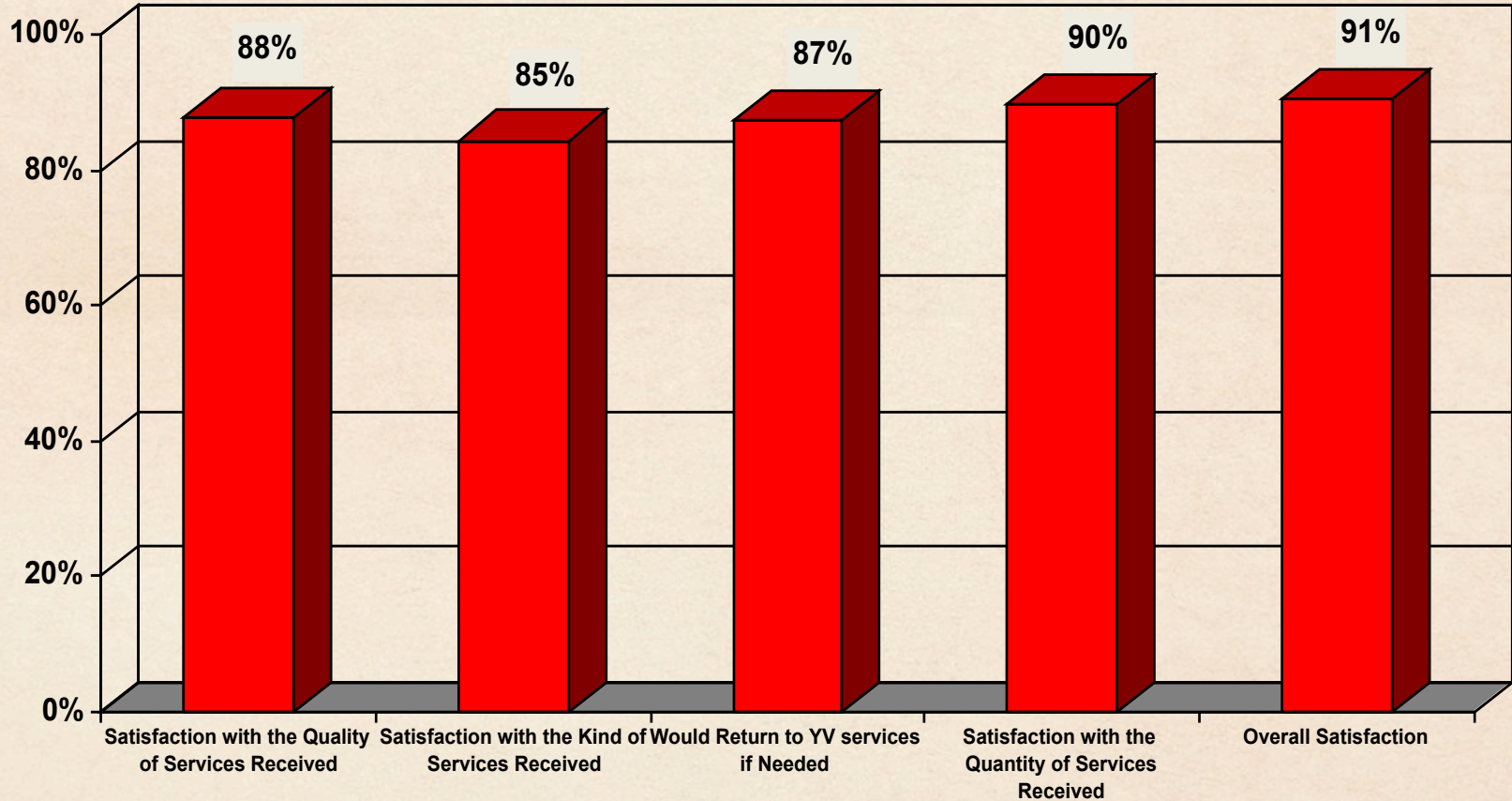
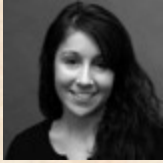
Only includes youth who received at least 60 days of service; 11.1% (649 out of 5,859)of admissions ended prior to 60 days.

*Other includes placements such as group homes, runaway, foster care and rehab centers

Transitional Living Program

Satisfaction at Discharge

Includes surveys conducted October 2009 through September 2013



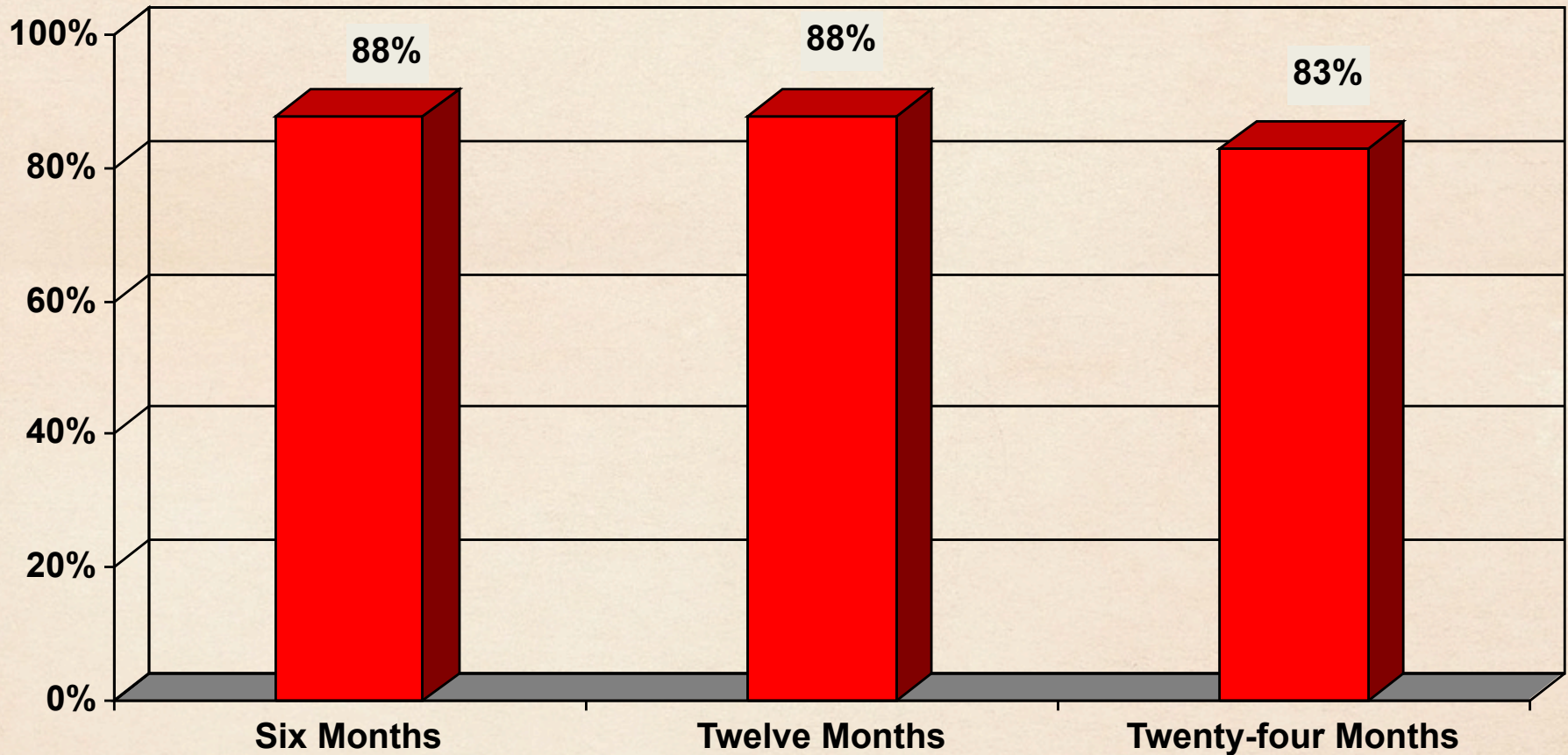
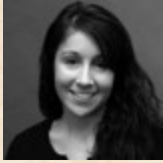
Only includes youth who received at least 60 days of service

All contents ©2013 by Youth Villages, Inc. with all rights reserved

Transitional Living Program

Success at Follow-up

Follow-ups conducted through September 2013



Success is defined as living with family or independently at the time of follow-up

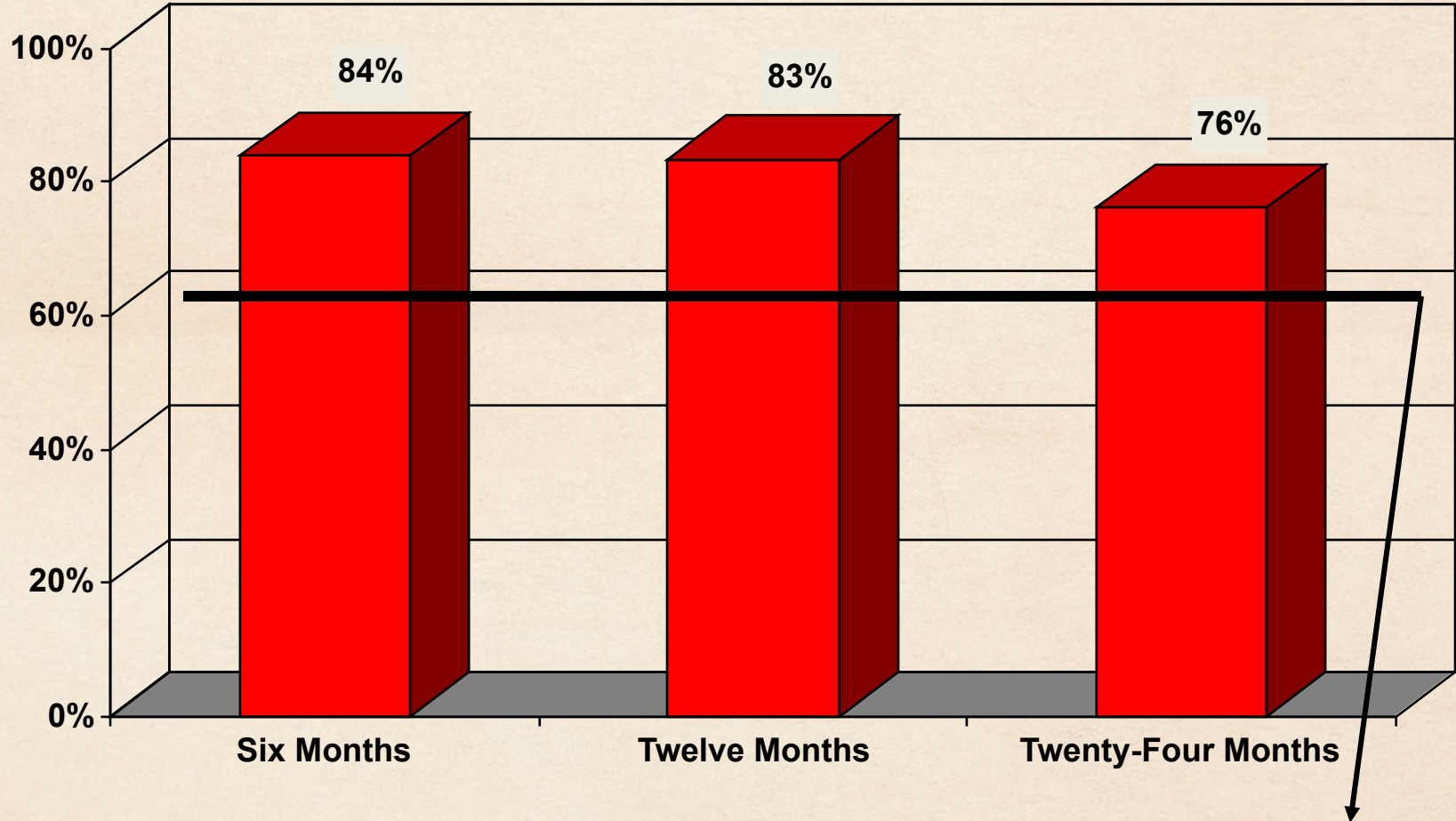
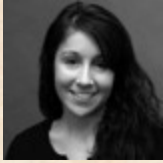
Only includes youth who received at least 60 days of service

All contents ©2013 by Youth Villages, Inc. with all rights reserved

Transitional Living Program

Youth reporting NO Trouble with the Law

Follow-ups conducted through September 2013



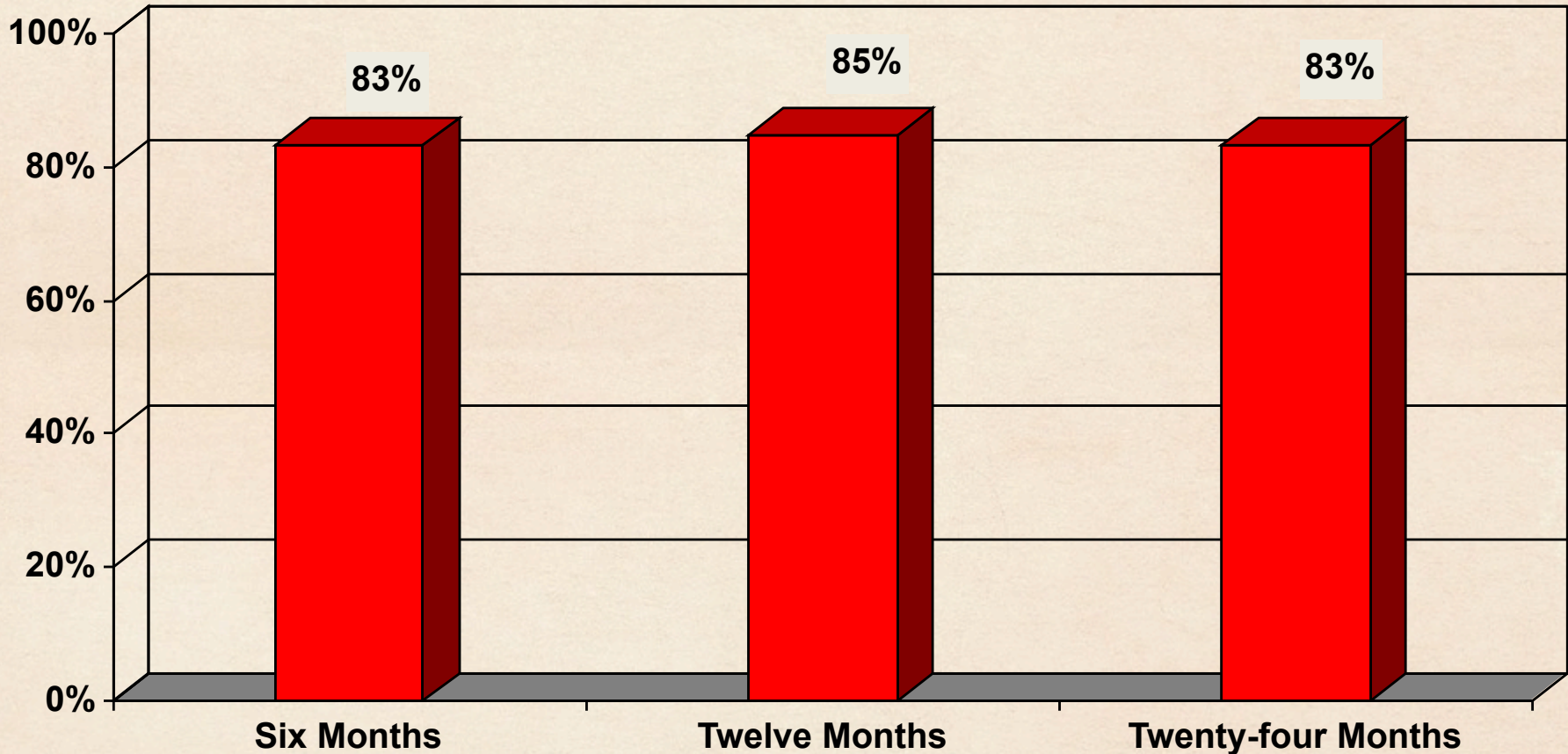
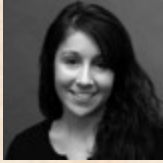
Only includes youth who received
at least 60 days of service

By age 21, nearly half of former foster youth surveyed for the Midwest Study had been arrested as adults.

Transitional Living Program

In School, Graduated, or Employed

Follow-ups conducted through September 2013



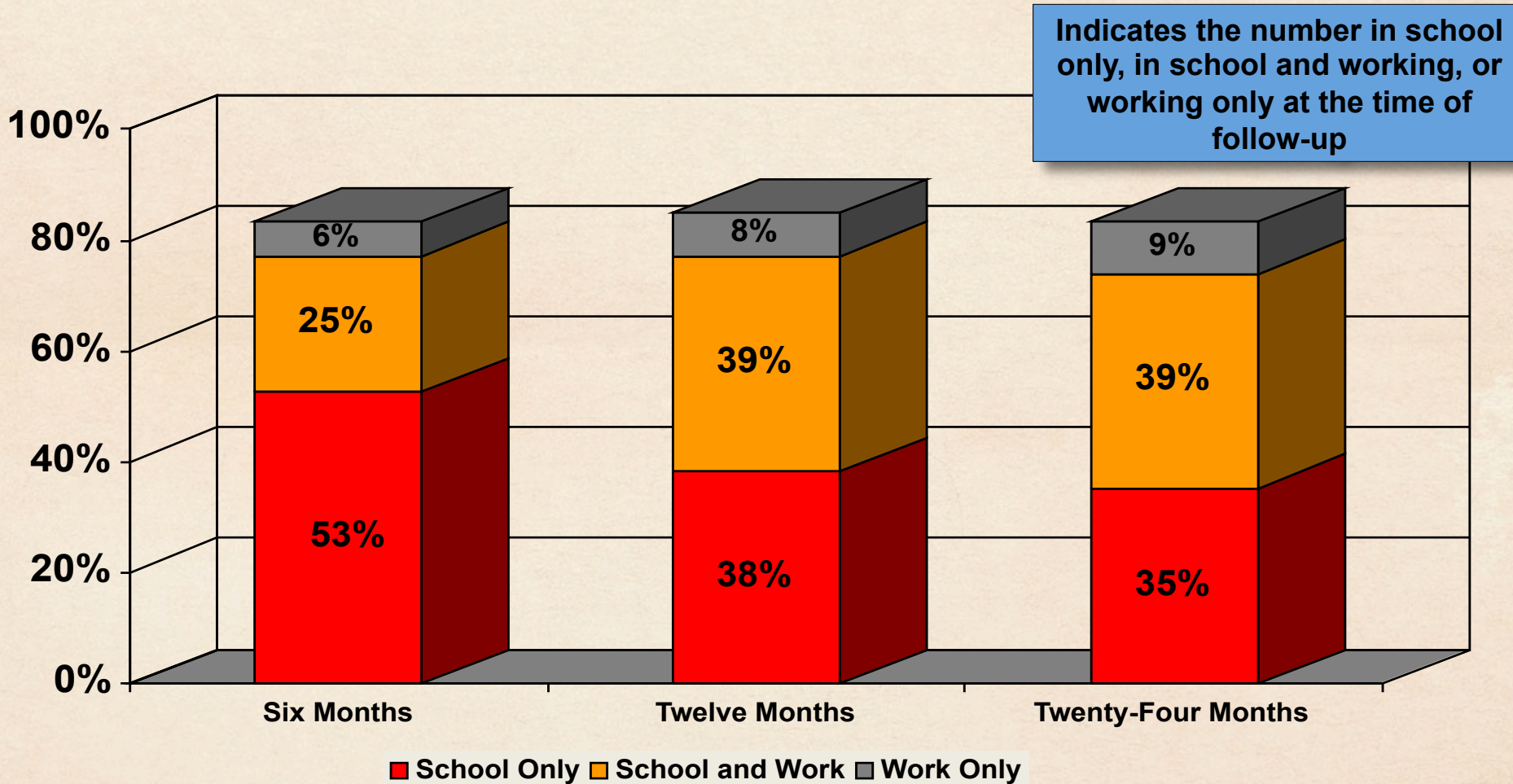
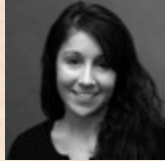
Only includes youth who received
at least 60 days of service

**Indicates the number in school,
graduated from high school (diploma
or GED) or employed at the time of
follow-up**

Transitional Living Program

School and Employment Status

Follow-ups conducted through September 2013



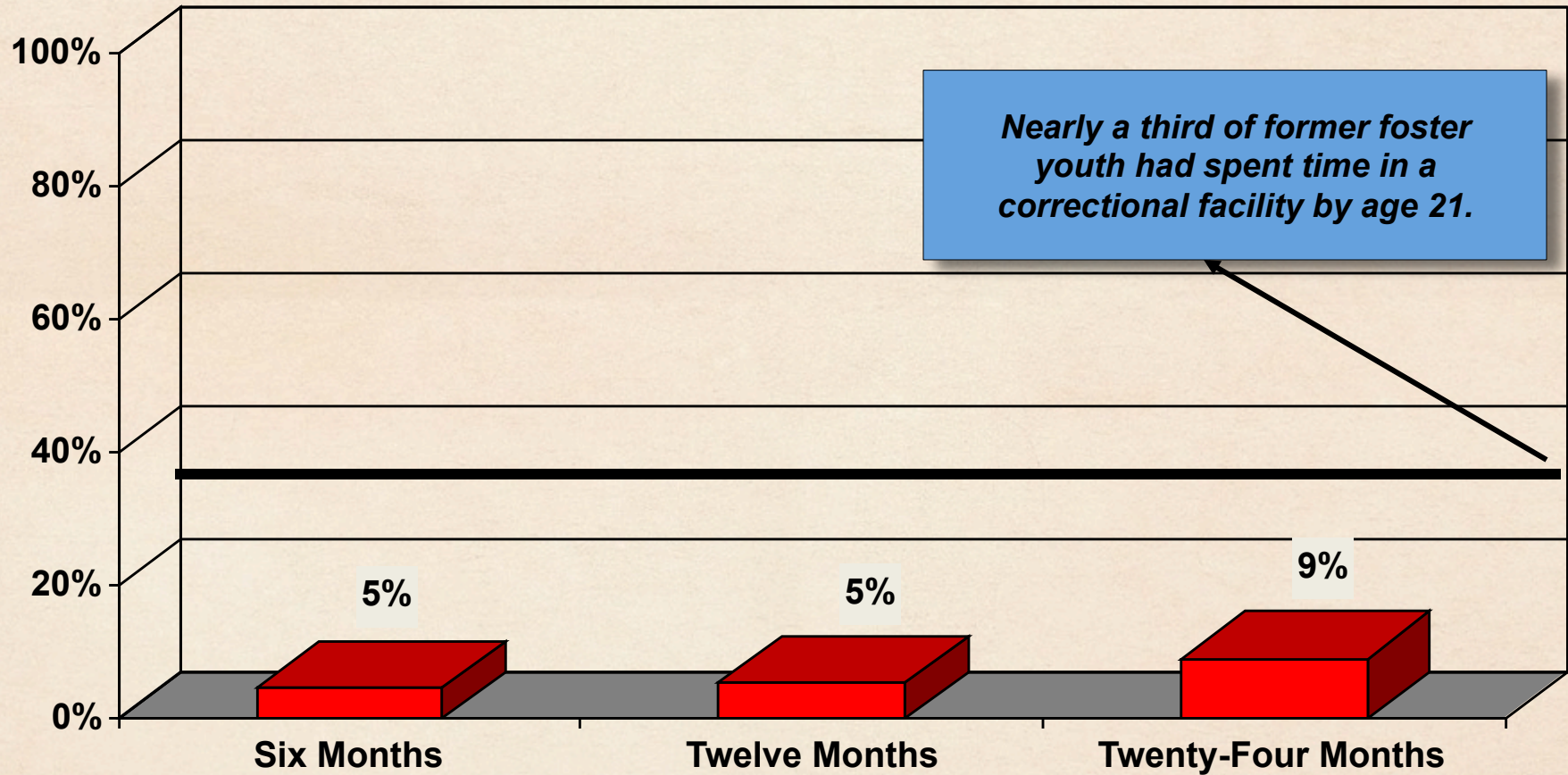
At age 21, nearly a quarter of former foster youth do not have a high school diploma and almost half are unemployed according to the Midwest Study.

Only includes youth who received at least 60 days of service.

Transitional Living Program

Correctional Facility Placements during Follow-up Period

Follow-ups conducted through September 2013



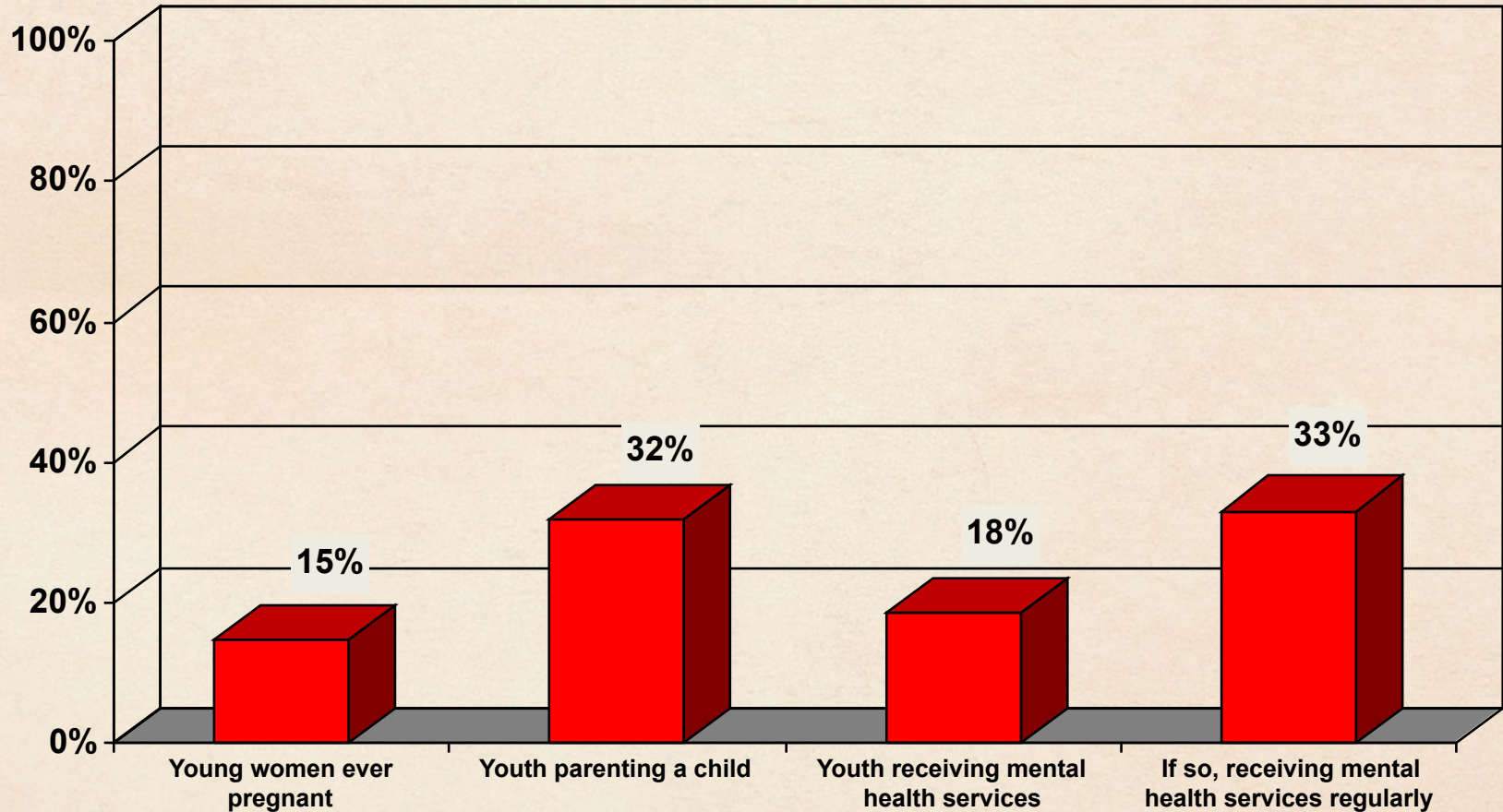
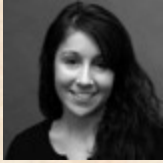
Only includes youth who received
at least 60 days of service

All contents ©2013 by Youth Villages, Inc. with all rights reserved

Transitional Living Program

Selected Outcomes at One Year Post-Discharge

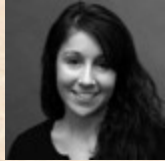
Follow-ups conducted through September 2013



Only includes youth who received
at least 60 days of service

All contents ©2013 by Youth Villages, Inc. with all rights reserved

About our Response Rates



	Surveys through 09/13
Discharge Surveys	47.5% (1,108 out of 2,331)
6-Month Follow-up	51.3% (2,446 out of 4,765)
12-Month Follow-up	45.5% (1,919 out of 4,215)
24-Month Follow-up	37.1% (1,173 out of 3,165)

- Surveys are conducted by research staff via phone with letter surveys to non-respondents.
- Please note: Surveys are completed with youth/families who have discharged from YV services altogether. If a youth re-enters YV services, the survey cycle is reset and begins again at their discharge.
- Rate of re-entry into YV services:
 6-Month Follow-up – 3.9% (191 out of 4,956)
 12-Month Follow-up – 5.3% (235 out of 4,450)
 24-Month Follow-up – 6.6% (223 out of 3,388)
- Internet search of public records (Lexis-Nexis) is completed to locate accurate contact information
- Due to the number of youth served, beginning in 2010 youth are randomly selected at discharge for follow-up surveys. The sample has been found to accurately represent the population of youth served based on demographics, length of service, and outcome at discharge; figures presented here represent outcomes for the population of youth discharged from the program within +/- 3% at the 95% confidence level.
- While no consensus exists regarding adequate response rates, 40% - 60% has been identified as appropriate for surveys of this type and size¹.



All benchmarks on the previous slides come from the Chapin Hall study cited below.



Courtney, M., Dworsky, A., Cusick, G., Havlicek, J., Perez, A., & Keller, T. (2007) Midwest evaluation of the adult functioning of former foster youth: Outcomes at age 21. Chicago: Chapin Hall at the University of Chicago.



Randomized Clinical Evaluation

- Random assignment evaluation conducted by an independent third party (scientific gold standard)
- Largest random assignment study of program for transition-age youth – 1,322 youth
- One year follow-ups completed by January 2014
- Follow-up at years 2 – 5 will be completed with administrative records
- Implementation evaluation due out this year
- Impact analysis due in the fall of 2014/spring of 2015





“This is one of the largest experimental evaluations ever conducted in the child welfare services field and the largest by far of a program focused on improving the transition to adulthood for foster youth. It will provide invaluable evidence to the field regarding ‘what works’ for foster youth.”

Mark Courtney, Ph. D.

For additional information, please contact:

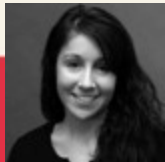
Mary Lee, National Transitional Living Coordinator

mary.lee@youthvillages.org

(901) 251 – 4934

or

visit our website at www.youthvillages.org





American Youth
Policy Forum

Question and Answer



@AYPF_Tweets