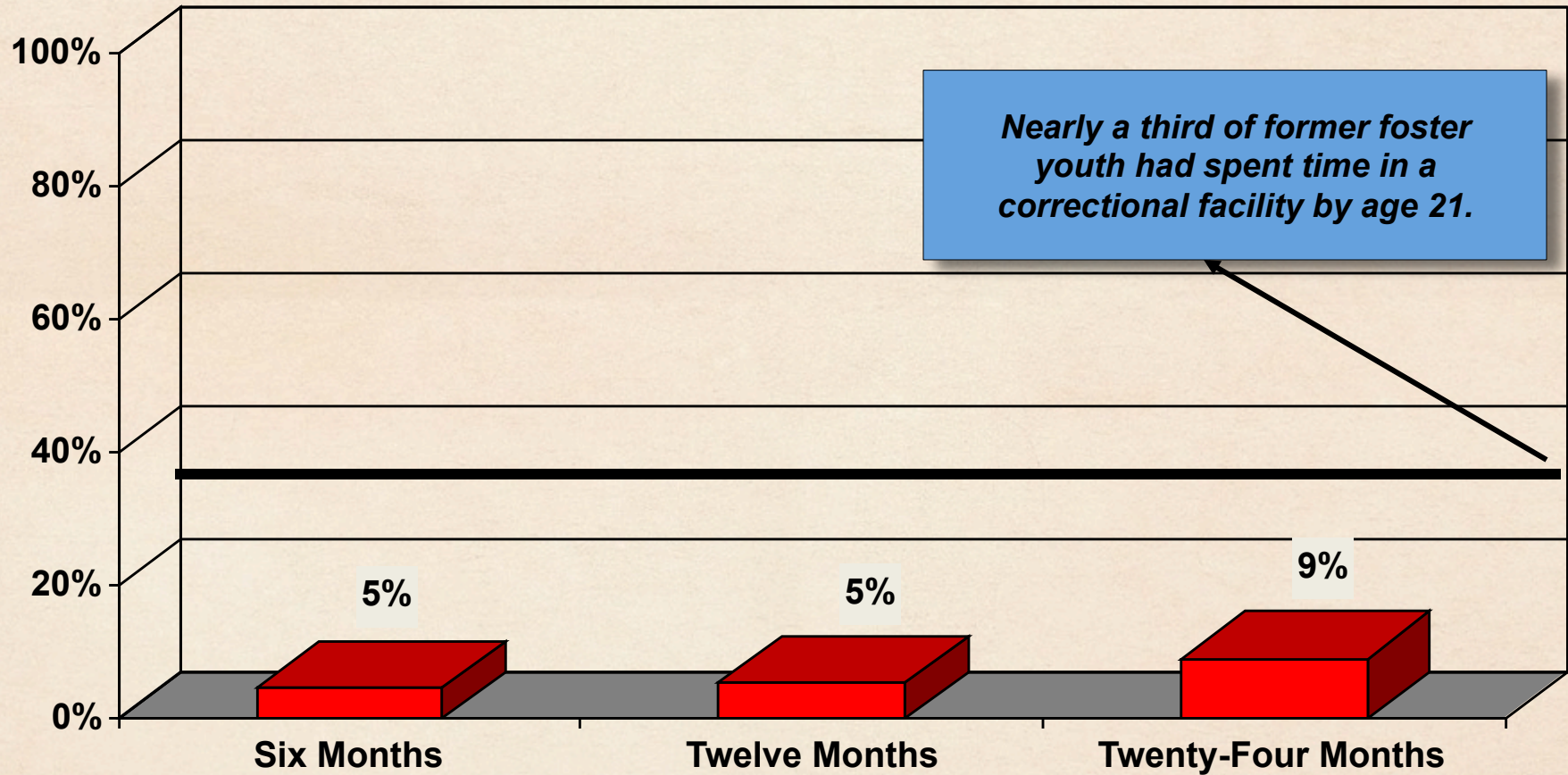
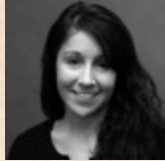


# ***Transitional Living Program***

## Correctional Facility Placements during Follow-up Period

Follow-ups conducted through September 2013



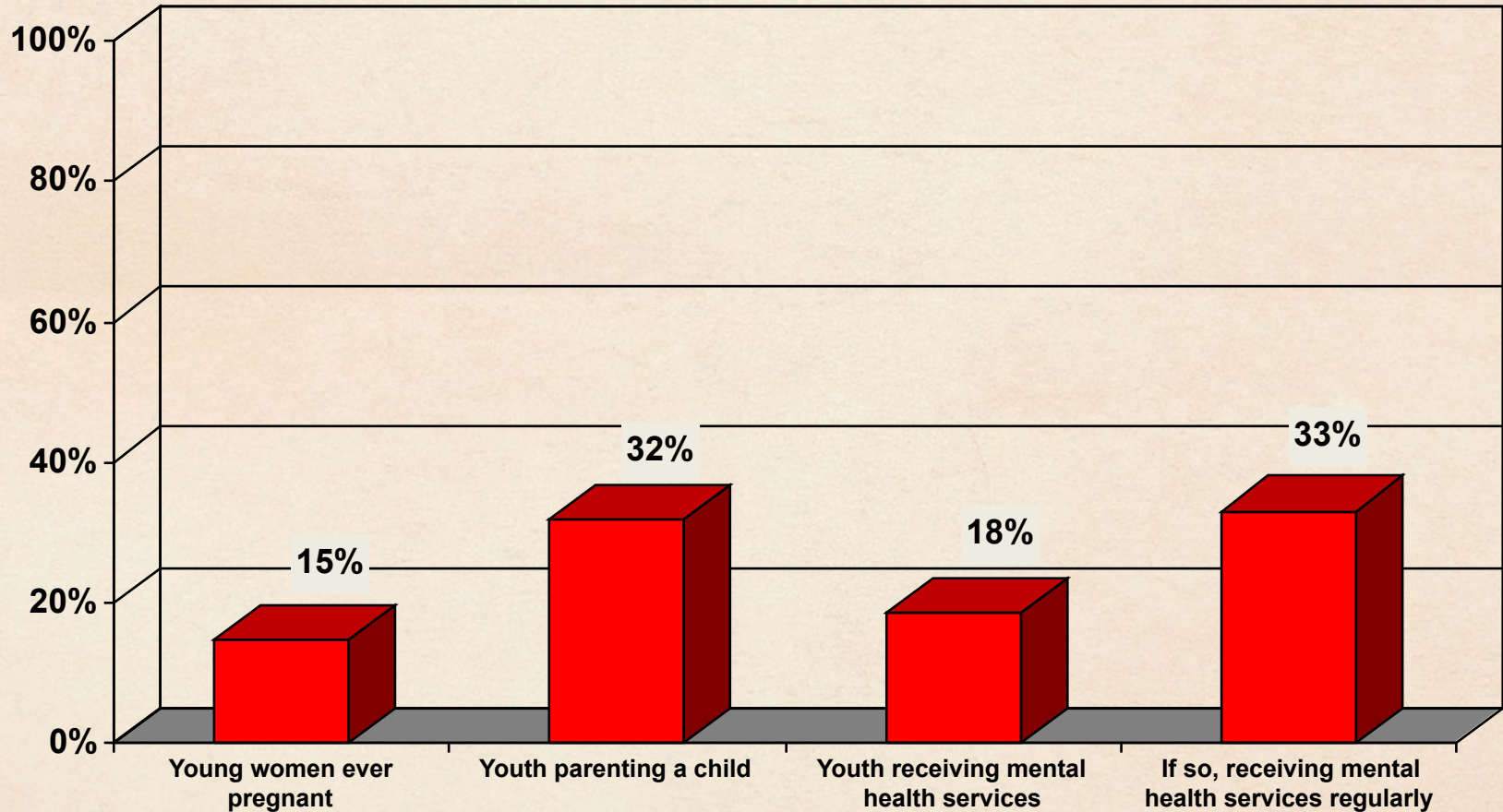
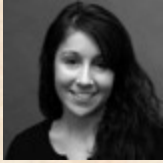
Only includes youth who received  
at least 60 days of service

All contents ©2013 by Youth Villages, Inc. with all rights reserved

# ***Transitional Living Program***

## **Selected Outcomes at One Year Post-Discharge**

Follow-ups conducted through September 2013

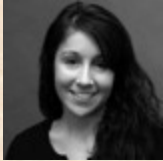


Only includes youth who received  
at least 60 days of service

All contents ©2013 by Youth Villages, Inc. with all rights reserved



# About our Response Rates



	Surveys through 09/13
<b>Discharge Surveys</b>	<b>47.5%</b> (1,108 out of 2,331)
<b>6-Month Follow-up</b>	<b>51.3%</b> (2,446 out of 4,765)
<b>12-Month Follow-up</b>	<b>45.5%</b> (1,919 out of 4,215)
<b>24-Month Follow-up</b>	<b>37.1%</b> (1,173 out of 3,165)

- Surveys are conducted by research staff via phone with letter surveys to non-respondents.
- Please note: Surveys are completed with youth/families who have discharged from YV services altogether. If a youth re-enters YV services, the survey cycle is reset and begins again at their discharge.
- Rate of re-entry into YV services:  
 6-Month Follow-up – 3.9% (191 out of 4,956)  
 12-Month Follow-up – 5.3% (235 out of 4,450)  
 24-Month Follow-up – 6.6% (223 out of 3,388)
- Internet search of public records (Lexis-Nexis) is completed to locate accurate contact information
- Due to the number of youth served, beginning in 2010 youth are randomly selected at discharge for follow-up surveys. The sample has been found to accurately represent the population of youth served based on demographics, length of service, and outcome at discharge; figures presented here represent outcomes for the population of youth discharged from the program within +/- 3% at the 95% confidence level.
- While no consensus exists regarding adequate response rates, 40% - 60% has been identified as appropriate for surveys of this type and size<sup>1</sup>.



All benchmarks on the previous slides come from the Chapin Hall study cited below.



Courtney, M., Dworsky, A., Cusick, G., Havlicek, J., Perez, A., & Keller, T. (2007) Midwest evaluation of the adult functioning of former foster youth: Outcomes at age 21. Chicago: Chapin Hall at the University of Chicago.



# Randomized Clinical Evaluation

- Random assignment evaluation conducted by an independent third party (scientific gold standard)
- Largest random assignment study of program for transition-age youth – 1,322 youth
- One year follow-ups completed by January 2014
- Follow-up at years 2 – 5 will be completed with administrative records
- Implementation evaluation due out this year
- Impact analysis due in the fall of 2014/spring of 2015







“This is one of the largest experimental evaluations ever conducted in the child welfare services field and the largest by far of a program focused on improving the transition to adulthood for foster youth. It will provide invaluable evidence to the field regarding ‘what works’ for foster youth.”

Mark Courtney, Ph. D.

**For additional information, please contact:**

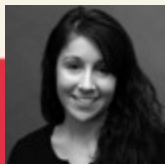
**Mary Lee, National Transitional Living Coordinator**

**[mary.lee@youthvillages.org](mailto:mary.lee@youthvillages.org)**

**(901) 251 – 4934**

**or**

**visit our website at [www.youthvillages.org](http://www.youthvillages.org)**





American Youth  
Policy Forum

# Question and Answer



@AYPF\_Tweets