



College- and Career-Readiness A Path of High Expectations

presented by the
Arkansas Department of Education



Arkansas' Story

- The Lake View case -- key litigation that served as a primary driver for reform efforts
- Key legislative and state board support
 - ✓ From 2004 to 2006, nearly \$700 million was added to the state's education budget!
 - ✓ Facilities became a priority of the state
 - ✓ Education will be funded first
 - ✓ An infusion of \$100 million in Pre-K funding
- Two Governors that have placed education and economic development as their top priorities



Arkansas' Story

We are engaged in systemic reform:

- ✓ Focus on changing the culture of low expectations in the state to prepare all students with rigorous coursework
- ✓ Smart Arkansas – *Start, Step, Future, Leadership and Accountability*
- ✓ Challenging standards and assessments aligned to college and career expectations (holding onto the belief in constructed response and critical thinking)
- ✓ Partnering with various stakeholders to hold ourselves accountable
- ✓ Promotion of Smart Core



Smart Core

A College & Career-Ready Curriculum

- 4 units of English
- 4 units of Mathematics (at least -- Algebra I, Geometry, Algebra II and a fourth higher level unit of math)
- 3 units of Lab Science
- 3 units of Social Studies
- ½ unit of Oral Communications
- ½ unit of Physical Education
- ½ unit of Health and Safety
- ½ unit of Fine Arts
- 6 units in the students CAREER FOCUS



When in Doubt, Keep on Believing

- Advanced Placement – one of the largest increases in the number of students taking AP and one of the largest increases in the number of students scoring at 3 or above
- Data Quality – Arkansas has all 10 Data Quality Campaign elements
- Professional development – 60 hour requirement
- Rigorous standards – work with Achieve to align standards for Literacy and Math to college and career-ready expectations

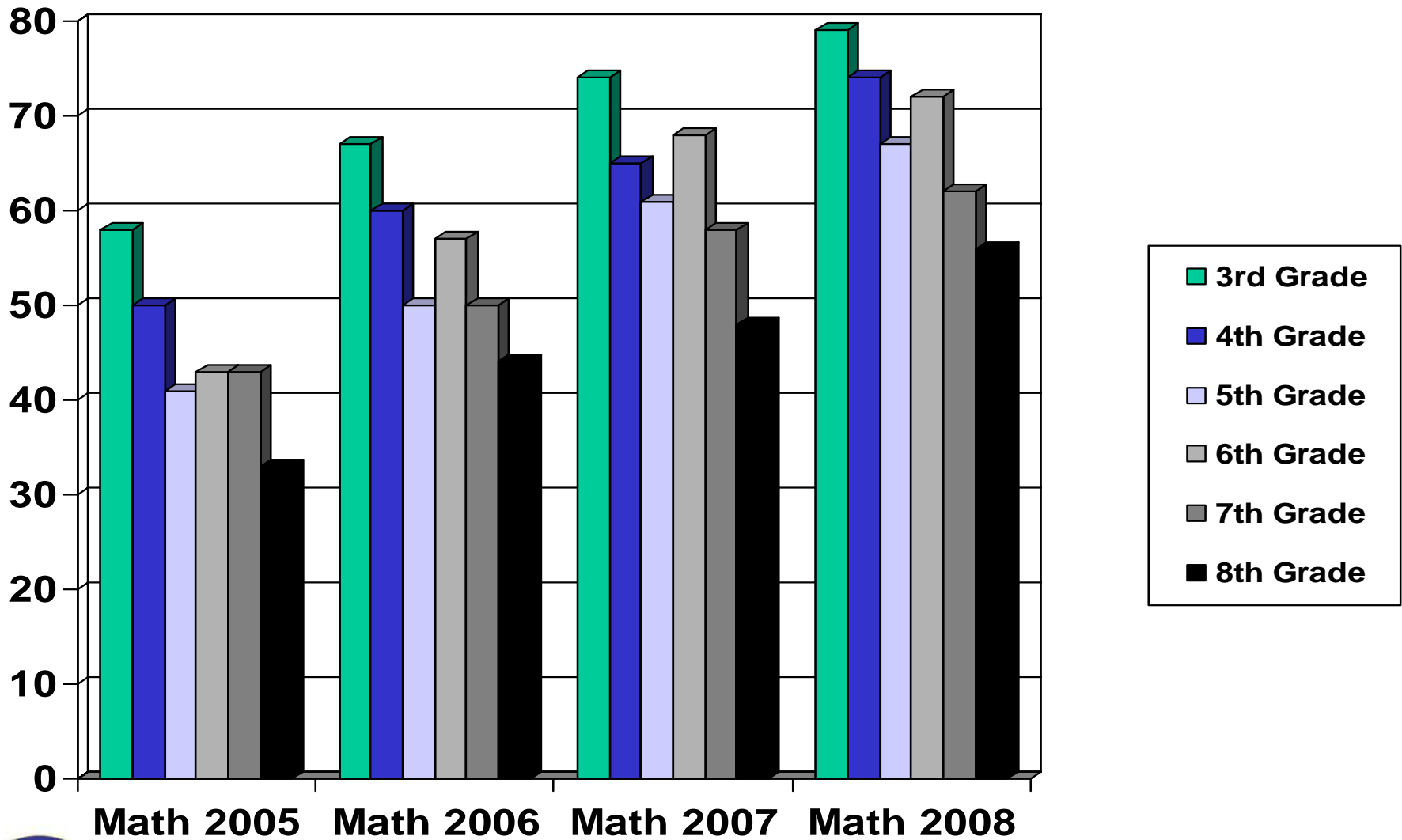


When in Doubt, Keep on Believing

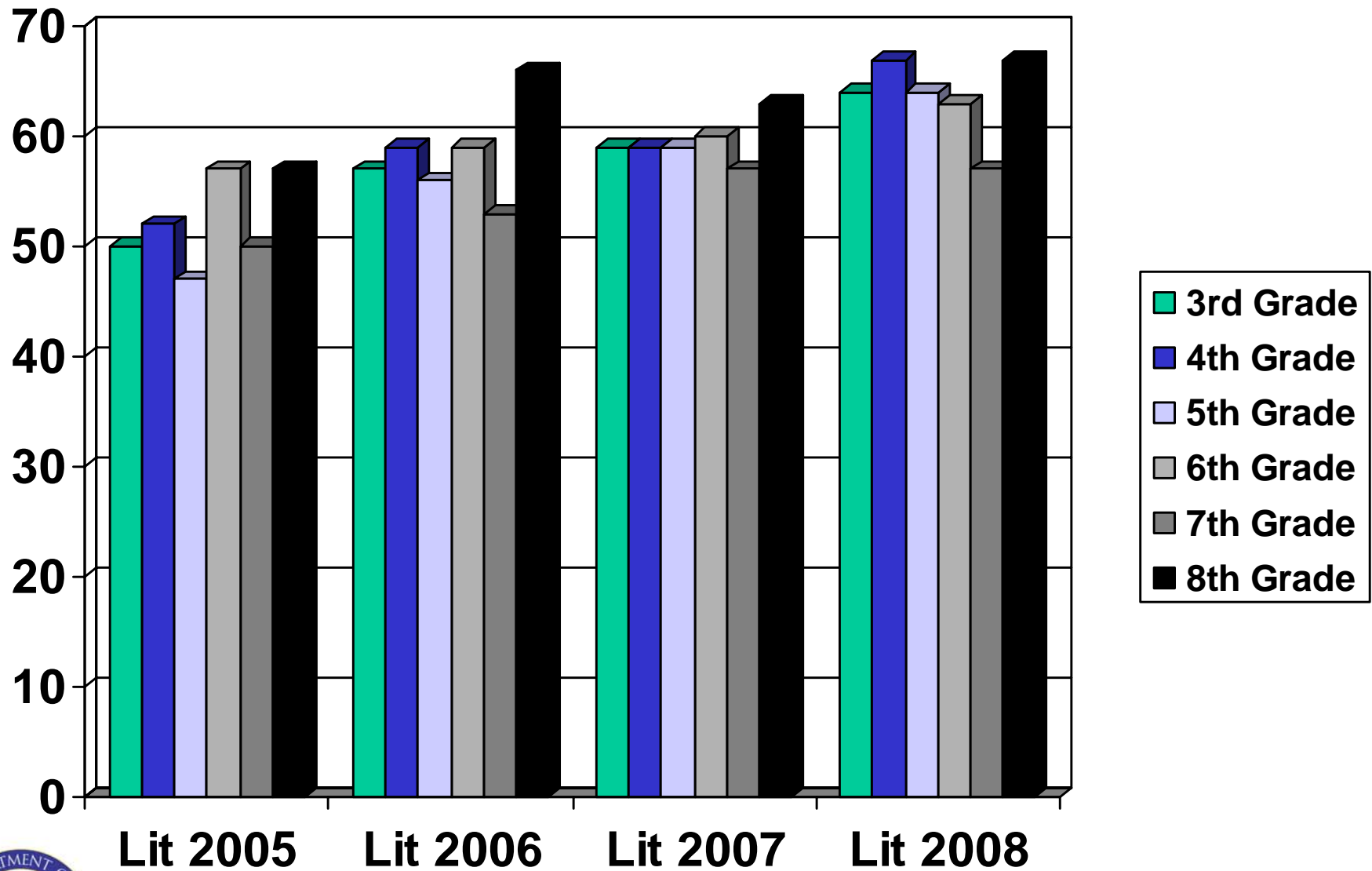
- Arkansas ranks in the top ten for having proficiency standards aligned with NAEP
- One of seven states to be selected for the National Math and Science Initiative – 13.5 million to the state
- Arkansas rates in the top three for the quality of our Pre-K program
- Arkansas rates #3 in the nation by Education Week on Teacher Quality and Preparation (requiring Praxis 1, 2, and 3 for licensure)
- Arkansas is one of eight states to be selected to participate in the Career and College-Ready Policy Institute



Benchmark Exam Scores



Benchmark Exam Scores



The Achievement Gap Narrows

For the second year in a row, scores on the 2008 Benchmark Exams represented a narrowing of the achievement gap.

- 8 of the 12 exams between Caucasians and African-Americans
- 7 of the 12 exams between Caucasians and Hispanics



Higher Education Partners

- Governor's Task Force on Remediation, Retention and Graduation Rates
 1. Strengthening the Arkansas Education Pipeline
 2. Improving Preparation
 3. Decreasing Remediation
 4. Accessing Financial Aid
 5. Increasing Retention and Graduation
 6. Enhancing Funding and Governance
 7. Addressing Data Needs
 8. Supporting Economic Development
- *Say GO College Campaign*
- *Achieving the Dream*



College & Career-Ready Policy Institute



College & Career-Ready Policy Institute

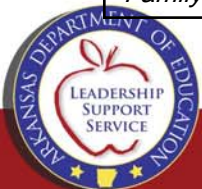
Involvement in the Policy Institute uniquely positions Arkansas to demonstrate State Fiscal Stabilization Fund assurances by:

- Providing the framework for states to lead coordinated action consistent with ARRA assurances, and to demonstrate success.
- Applying the work the state has done with DQC and Achieve as the baseline data used in the application.
- Helping to provide focus to district planning of funds.



Rubric

<i>Building Capacity to Enhance Student Achievement</i>				
Goals →	College- and Career- Ready Preparation (including programs for ELL and SPED students)	Data-Driven Programs or Processes to track progress and foster continuous Improvement	Teacher Effectiveness and Equitable Distribution of Highly Qualified Teachers	Intensive Support and Effective Interventions
Funding Sources ↓				
TITLE 1, PART A (\$111.1 million) Federal program requirements remain				
IDEA Part B (\$117.7 million) Federal program requirements remain				
State Fiscal Stabilization Fund (81.8 percent = \$363.1 million) <i>Funds can be used for any approved program under ESEA (including new construction, modernization, renovation, or repair of public school facilities), IDEA, Perkins, and the Adult Education and Family Literacy Act.</i>				



College & Career-Ready Policy Institute – The Framework

- Clear goals for improving high school graduation, college and career-readiness and postsecondary attainment rates.
- A clear proposal for a comprehensive assessment system that is aligned with college and career-ready standards and that measures student progress over time.
- A clear proposal for a coherent system of accountability that makes college and career readiness a central priority that incentivizes proper actions, promotes accurate judgments, and drives effective supports and interventions.
- A design for a statewide system of supports and interventions to assist low performing districts and schools and ensure continuous improvement for all schools and districts around the state.
- Strategies for providing educational options and supports to boost the achievement of low-income students and other groups at high-risk of not achieving college-ready standards and college success.



Arkansas' Proposed Definition of College & Career-Readiness

Readiness for college and readiness for careers require the same academic foundation. Every Arkansas high school graduate should have this foundation.

College- and career-readiness in Arkansas means that students are prepared for success in entry-level, credit-bearing courses at two-year and four-year colleges and universities, in technical postsecondary training, and in career pathways, all of which lead to the well-paying jobs necessary to support individuals, their families, and their communities. To be college- and career-ready, students need to be adept problem-solvers and critical thinkers who can contribute and apply their knowledge in novel contexts and unforeseen situations.

This level of readiness requires access to a rigorous high school curriculum which includes Smart Core:

- Four units of mathematics, including Algebra I, Geometry, Algebra II and a fourth unit of higher-level mathematics such as statistics or Calculus
- Four units of English
- Three units of laboratory-based science
- Three units of social studies

Smart Core is the foundation for college- and career-readiness. All students should supplement with additional rigorous coursework within their career focus.



A Sample of Arkansas' Policy Priorities

- Developing strategies to advocate and communicate the critical importance of college and career-readiness to all stakeholders.
- Developing user-friendly interfaces for school staff to facilitate broader use of the data system for instructional purposes.
- Developing a process to continue conversations around a common understanding of anchor assessments that reflect college readiness.
- Ensuring alignment between the academic framework of Smart Core and Career Technical Education frameworks.
- Developing an early warning system to help those students at risk of dropping out of school.



Federal Role in Building High Expectations

- Encourage state-led activities and collaboration
- Continue to provide support (Race to the Top & Innovation Grants) related to standards, assessments, teacher quality and distribution, data systems, and supports for chronically underperforming schools.
- CCSSO Goals
 - Next Generation Learning
 - Standards, Assessment and Accountability
 - Creating a System of Educator Development
 - Comprehensive Data Systems



How do we move forward?

- ✓ Eliminate Smart Core opt-out provision
- ✓ Target resources
- ✓ Focus on closing the achievement gap
- ✓ Focus on teaching and the classroom
- ✓ Make fuller use of data for instructional and accountability purposes
- ✓ Decrease the number of students requiring remediation and increase the number of students graduating from college





College- and Career-Readiness A Path of High Expectations

presented by the
Arkansas Department of Education

