

Wheaton High School

Celebrating Our Diversity

Total	Females	Males	Afr Am	Asian	Hisp	White
100%	38%	62%	22%	11%	56%	10%
1333	514	819	299	150	745	138

SpEd	ESOL	FARMS	Now/Ever FARMS
10%	16%	48%	82%

YEAR	FARMS % for Ninth Grade Class
03 – 04	45%
04 – 05	45%
05 – 06	46%
06 – 07	47%
07 - 08	53%
08 – 09*	65%

Wheaton High School

BIOMEDICAL Enrollment

Total	Females	Males	Afr Am	Asian	Hisp	White
100%	66%	34%	29%	15%	45%	12%
170	112	58	49	24	77	20

Wheaton High School

Engineering Enrollment

Total	Females	Males	Afr Am	Asian	Hisp	White
100%	13%	87%	23%	10%	56%	11%
347	46	301	81	35	194	37

Wheaton High School

IT Enrollment

Total	Females	Males	Afr Am	I	Asian	Hisp	White
100%	24%	76%	23%	1%	20%	40%	17%
121	38	121	37	1	31	63	27

Wheaton High School

IGCS Enrollment

Total	Females	Males	Afr Am	Asian	Hisp	White
100%	72%	28%	16%	11%	52%	21%
71	51	20	11	8	37	15

WHS Focus

- **AP Enrollment/Performance**
- **Honor Roll**
- **Eligibility**
- **HSA Scores**
- **SAT Participation/Performance**

Honors and AP Enrollment

	Percentage of students in Honors Classes	Percentage of students in AP Classes
06/07	59%	25%
07/08	60%	26%
08/09	67%	31%

Honors and AP Enrollment

Grades 10 - 12

	Percentage of students in Honors Classes	Percentage of students in AP Classes
NONACADEMY	46%	26%
Engineering	87%	47%
BIOMED	93%	65%
IT	85%	50%
IGCS	96%	63%

Advanced Placement Participation 31%

2008 - 2009

Males	Females	Afr Am	Asian	Hisp	White
55%	45%	19%	17%	48%	15%
226	183	78	69	198	63

Honors Level Participation 67%

Males	Females	Afr Am	Asian	Hisp	White
61%	39%	23%	13%	52%	13%
544	355	206	113	466	113

Academy College Courses 2007 - 2008

College ES 100 Engineering Science	14
College Linear Algebra Course	1
HI 125 Medical Terminology	13
HI 105 Health Science	12

Academy College Courses 2008 - 2009

College ES 100 Engineering Science	16
Anthropology	17
College Skills	18
Sociology	15
HI 125 Medical Terminology	16
HI 105 Health Science	16

PLTW College Credits from RIT

■ 03-04	14	Students Passed College Exam
■ 04-05	17	Students Passed College Exam
■ 05-06	62	Students Passed College Exam
■ 06-07	57	Students Passed College Exam
■ 07-08	68	Students Passed College Exam

■ Total (218)

■ Out of 218 only 20 have applied for credit due to the cost of \$200.00 for each 3 credit course

What will my schedule look like?

Grade 9	Grade 10	Grade 11	Grade 12
English 9 or Higher Level English	English 10 or Higher Level English	English 11 or Higher Level English	English 12 or Higher Level English
Algebra I or Higher Level Math	Geometry or Higher Level Math	Algebra 2 or Higher Level Math	Pre- Calculus or Higher Level Math
Matter & Energy or Higher Level Science	Biology or Higher Level Science	Physics or Higher Level Science	Chemistry or Higher Level Science
U.S. History or Higher Level Social Studies	NSL Reg. Or Higher Level Social Studies	Modern World History or Higher Level Science	Engineering Design & Development
Principles Of Engineering	Introduction To Engineering Design	Digital Electronics	Internship / Elective
9 th Grade Connections / Physical Education	Health / Physical Education	Aerospace Engineering Or Civil Engineering & Architecture	Internship / Elective
Foreign Language Elective	Foreign Language Elective	Foreign Language, Fine Arts or Elective	Internship / Elective

Honor Roll

	Total 06	Total 07	Total 08
Q1	22%	24%	24%
Q2	19%	19%	21%
Q3	19%	22%	25%
Q4		21%	24%

Honor Roll 2007 - 2008

	NON	BIO	ENG	IT	IGCS
Q1	20%	39%	21%	38%	56%
Q2	16%	37%	19%	30%	53%
Q3	21%	40%	23%	30%	50%
Q4	20%	37%	22%	29%	53%

Eligibility

	Total 06	Total 07	Total 08
Q1	63%	67%	70%
Q2	58%	59%	60%
Q3	65%	64%	71%
Q4	67%	61%	65%

Eligibility 2007 - 2008

	NON	BIO	ENG	IT	IGCS
Q1	63%	81%	73%	80%	97%
Q2	53%	75%	64%	67%	85%
Q3	65%	81%	73%	81%	91%
Q4	57%	82%	70%	70%	88%

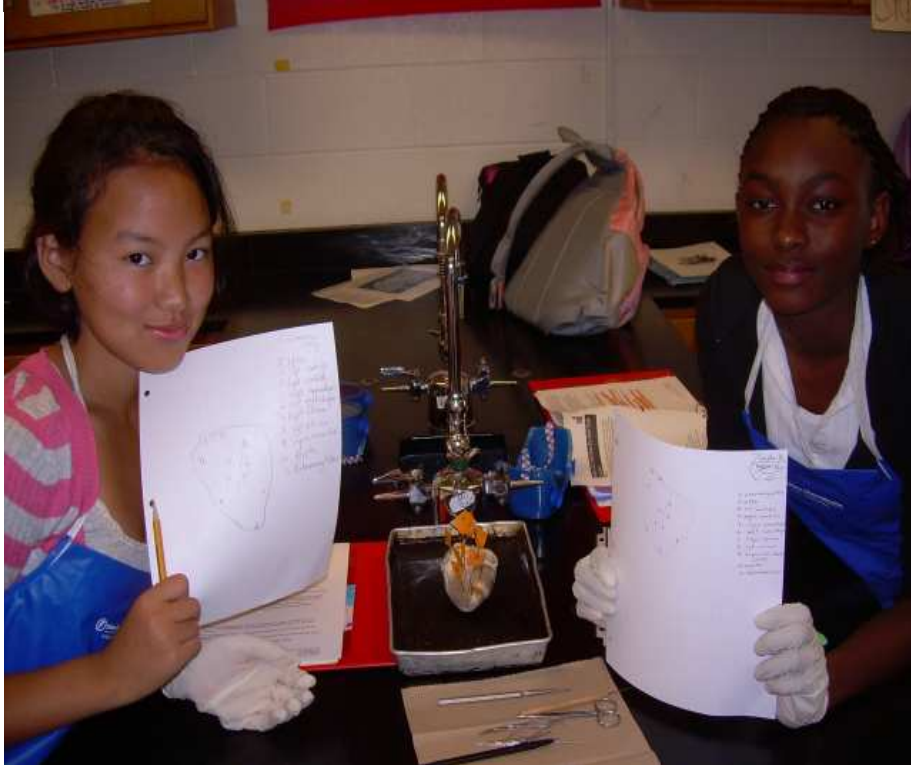
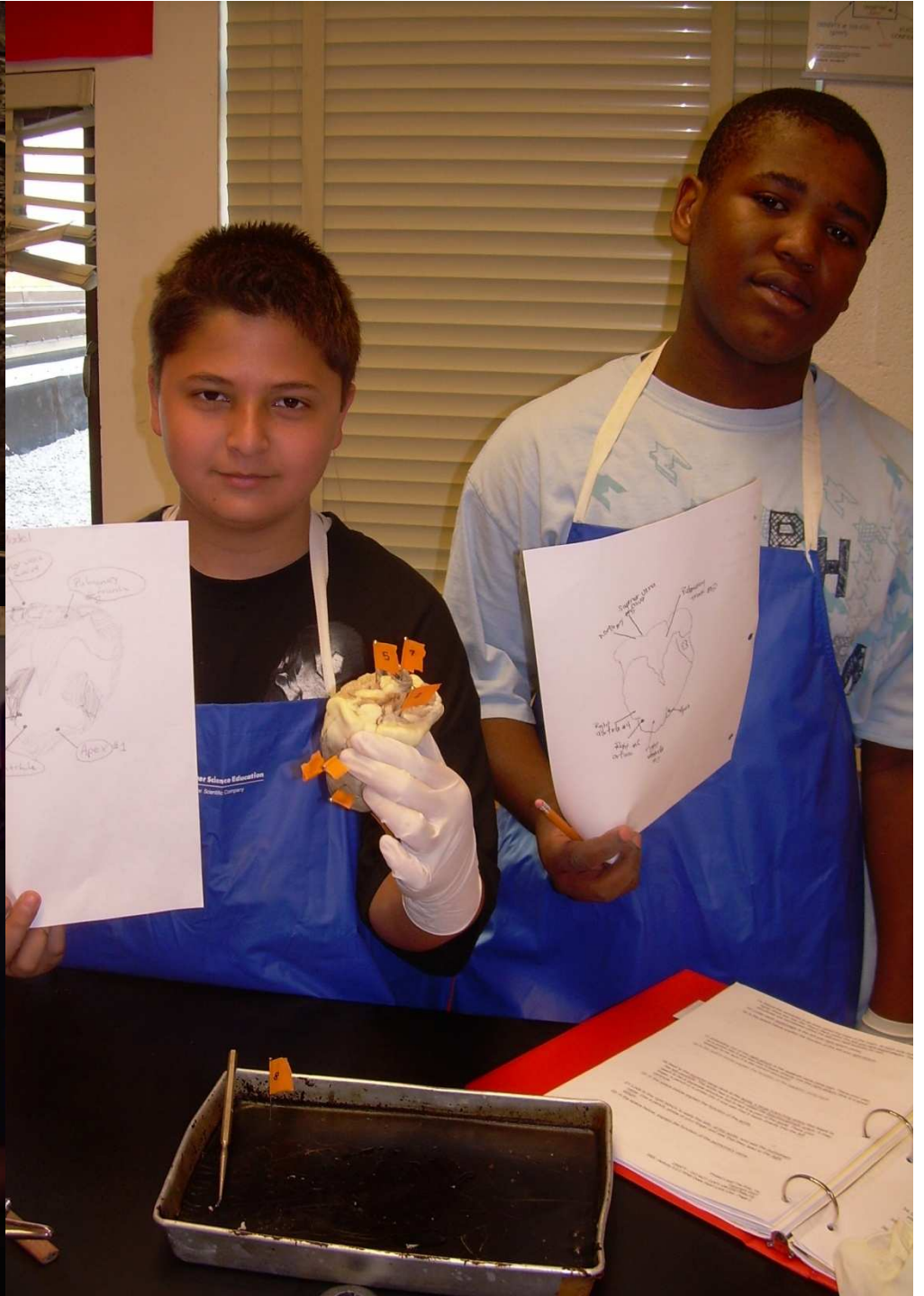
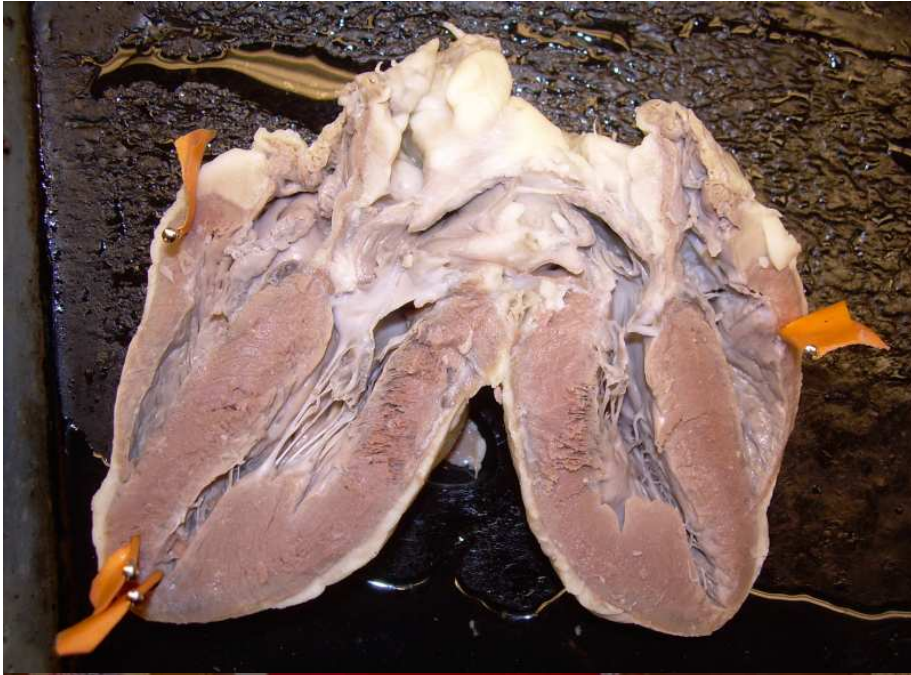
Wheaton High School

HSA Results

Year	Alg.1	Bio	NSL	English 10
04/05	34.6	45.9	59.0	48.5
05/06	68.4	69.2	69.1	47.2
06/07	56.3	75.1	81.1	60.9

SAT Score and Participation

Graduation Year	Score	Participation
2005	916	62%
2006	1313	63%
2007	1326	75%
2008	1314	77%





Extra Activities

- Mentors Program
- Clubs
- SAT Prep Course
- College Visits
- Workshops
- Business Partnerships
- Career Day
- Internships

“Engineering Our Future”



Awards

- **MetLife Breakthrough School**
- **College Board Dr. Asa Hilliard Model of Excellence Award**
- **Engineering Academy – Outstanding Secondary Career and Technology Education Program**

Engineering Scholarships

■	Massielle Begazo	Cornell University	Mechanical Engineering	35,000/yr	Total	\$140,000.00
■	Brainton Song	UMD College Park	Electrical Engineering	20,000/yr	Total	\$80,000.00
■	Roberto Higueros	Penn State	Computer Engineering	12,000/yr	Total	\$48,000.00
■	Richard Mancco	MIT	Mechanical Engineering	37,750/yr	Total	\$151,000.00
■	Emily Mukora	Rensselaer	Mechanical Engineering.	24,000/yr	Total	\$96,000.00
■	Frances Padua.	Cornell University	Mechanical Engineering	42,000/yr	Total	\$168,000.00
■	Wendy Avelar	Cornell University	Mechanical Engineering	46,600/yr	Total	\$186,400.00
■	Issa Braithwaite	Ohio University	Accounting	\$17,000/yr	Total	\$68,000.00
■	Sam Belay	Virginia Tech	Mechanical Engineering	\$24,000/yr	Total	\$96,000.00
■	Alan Dean	McDaniel	Chemical Engineering	\$2,000/yr	Total	\$8,000.00
■	Benigno Benitez	DeVry University	Electrical Engineering	\$18,000/yr	Total	\$72,000.00
■	Michael Scaletter	Frostburg State	Mech/Elect. Engineering	\$20,000/yr	Total	\$80,000.00
■	Rathika Ratnayake	Penn State	Nuclear Engineering	\$12,000/yr	Total	\$48,000.00

Portal to Success in Engineering Program (Two year scholarship with possible additional two years)

■	Gloria Ramirez	Montgomery College	Aeronautical\Civil Eng.	\$6,000/yr	Total	\$12,000.00
■	Alex Garabed	Montgomery College	Computer Engineering	\$6,000/yr	Total	\$12,000.00
■	Marvin Ramirez	Montgomery College	Aeronautical Engineering	\$6,000/yr	Total	\$12,000.00
■	Raymer Richardson	Montgomery College	Mechanical Engineering	\$6,000/yr	Total	\$12,000.00
■	Ivan Gonzales	Montgomery College	Electrical Engineering	\$6,000/yr	Total	\$12,000.00
■	Daniel Delagado	Montgomery College	Architectural Engineering	\$6,000/yr	Total	\$12,000.00
■						
■	Jessica Steinmann	Embry Riddle Univ.	Aerospace Engineering	\$26,000/yr	Total	\$104,000.00
■	Yennifer Hernandez	West Virginia	Mechanical Engineering	\$18,631/yr	Total	\$74,524.00
■	Zachary Olmstead	Jacksonville Univ.	Acoustical Engineering	\$13,000/yr	Total	\$52,000.00
■	Claudia Amaya	Capitol College	Electrical Engineering	\$10,000/yr	Total	\$40,000.00
■	Oswaldo Ceron	Marymount	Bio- Engineering	\$9,000/yr	Total	\$36,000.00
■	Andrew Kim	Frostburg State	Electrical Engineering.	\$7,000/yr	Total	\$28,000.00
■	Duy Nguyen	Johns Hopkins	Mechanical Engineering	\$6,000/yr	Total	\$24,000.00
■	Robert Paynter	Montgomery College	Mechanical Engineering	\$6,000/yr	Total	\$24,000.00
■	Leandro Manuel	Montgomery College	Electrical Engineering	\$6,000/yr	Total	\$12,000.00
■	Amina Ochieng	Johnson C. Smith Univ.	Mechanical Engineering	\$10,000/yr	Total	\$40,000.00
■	Chao Wu	Univ.of Maryland	Electrical Engineering	\$6,000/yr	Total	\$24,000.00
■						

Total \$2,074,524.00

BioMedical Scholarships

University of Maryland College Park	4	\$166,584
Towson University	1	\$12,000
The Catholic University of America	2	\$20,000
Brown University	1	\$189,904
Hampton University	1	\$3,000
Montgomery College	6	\$9,696
Loyola of Maryland	1	\$128,000
Marymount University	4	\$141,600
Liberty	1	
The College of William and Mary	1	\$88,000
McDaniel College	2	\$123,120
University of Virginia	1	\$111,000
Pittsburgh University	1	\$86,464
Howard University	1	
Dillard University	1	\$36,000
Dickenson College	1	\$192,000
Randolph Macon College	1	\$80,000
American University	1	\$80,000

Why Wheaton's Academies are Successful

- **Great Academy Heads**
- **Dedicated and Committed Teachers**
- **Curriculum**
- **Excellent Teacher Training**
- **Support from the Counselors and Community**
- **Business Partnerships/Mentors**
- **Support from MSDE and MCPS**