



Neighborhood Place...

*Where Working Together for
Families is an Art!*

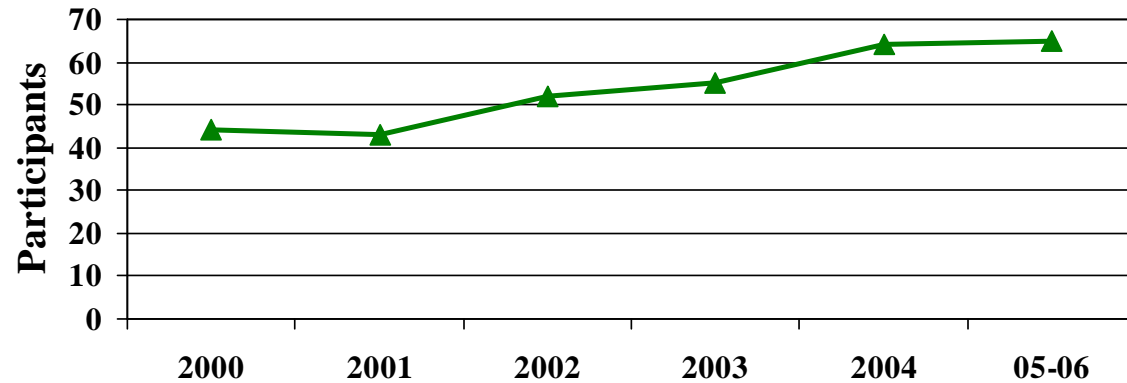
2007 Services and Outcomes Report

**A compilation of service, survey and outcome data as it relates to the Goals
of Neighborhood Place**

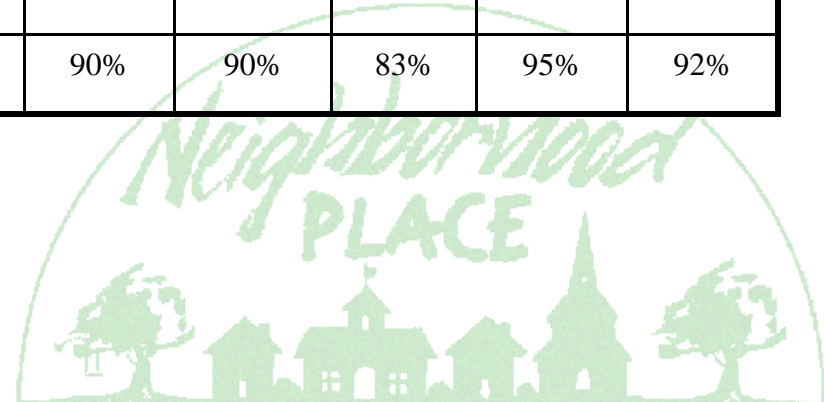
Community Council Survey

Community Council Members are surveyed annually to determine council functioning and training needs.

Participant Level Trend Data



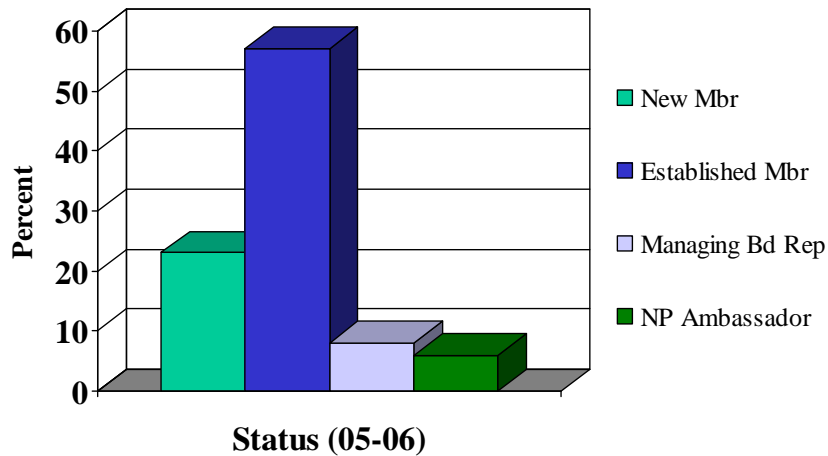
Survey Snapshot	2001	2002	2003	2004	05-06
Provide input in planning and evaluating services	89%	87%	82%	98%	91%
Identify needed services in community	91%	93%	89%	97%	95%
Partner with other organizations to problem-solve			78%	90%	89%
Annual average rating	90%	90%	83%	95%	92%



Community Council Survey

(continued)

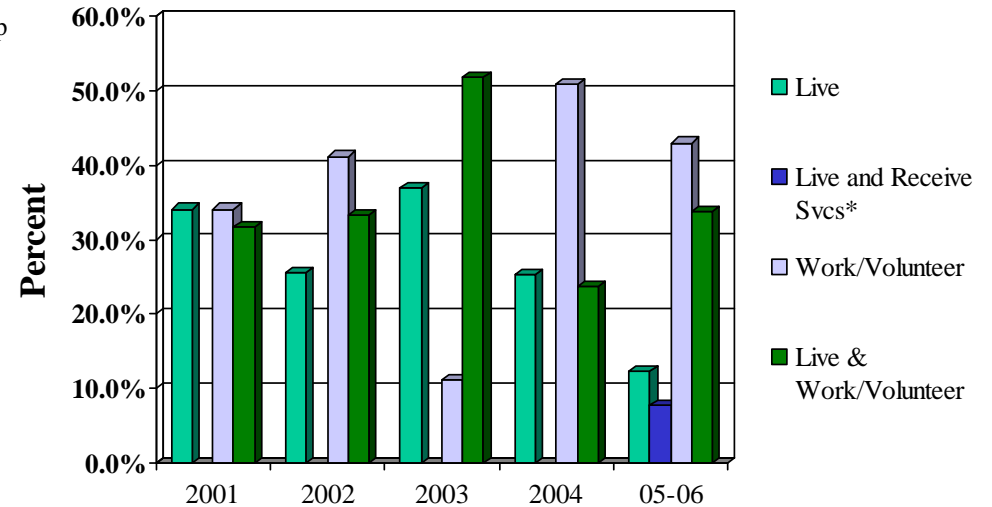
Level of Involvement



Council Members' status ranges from newly appointed to ambassador level after serving two consecutive terms.

Council Members must either live, work and/or volunteer within the community that they serve.

Basis for Involvement



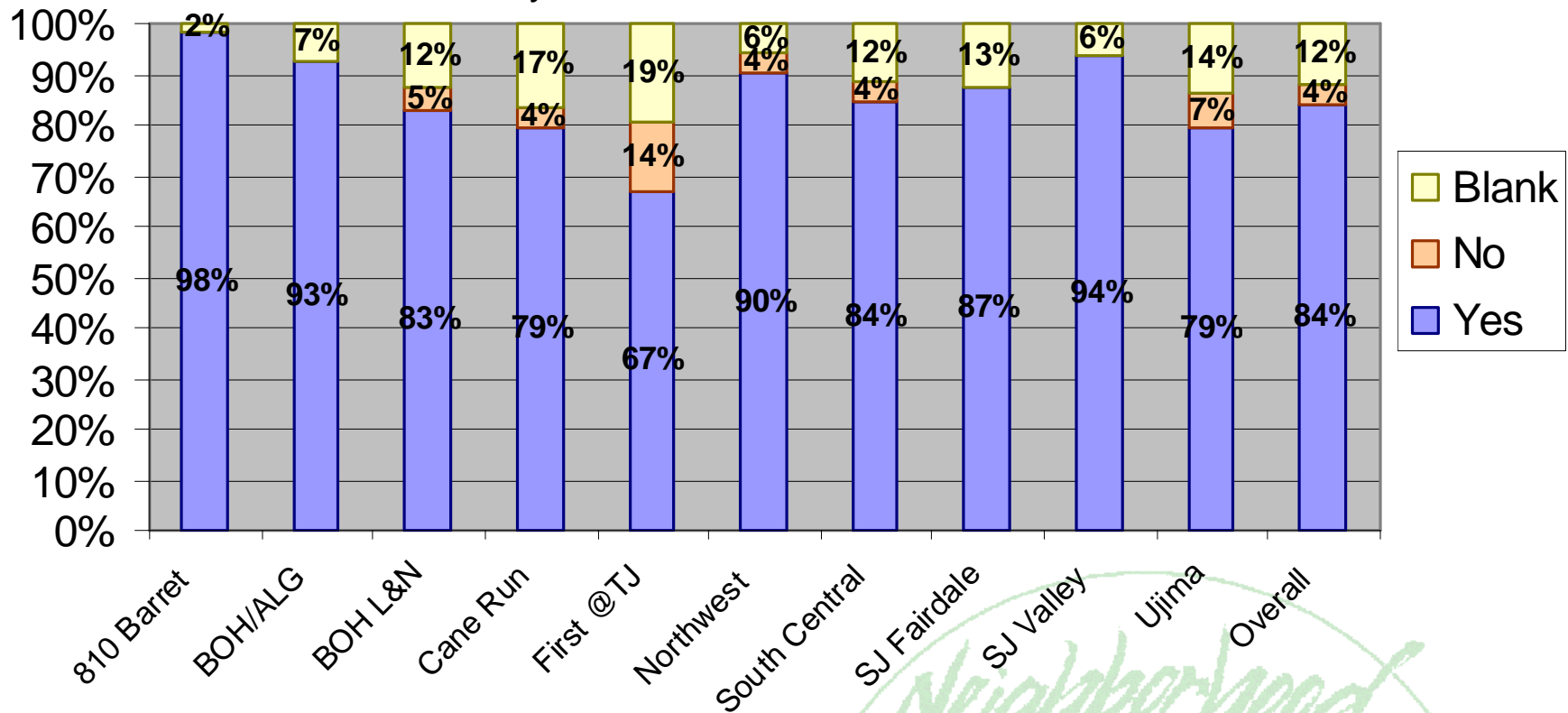
*Live and Receive Svcs was an addition to the 05-06 survey



Client Satisfaction Survey

Clients are surveyed for one week each April. 786 clients responded to the survey in 2007.
The responses to selected survey questions are illustrated below

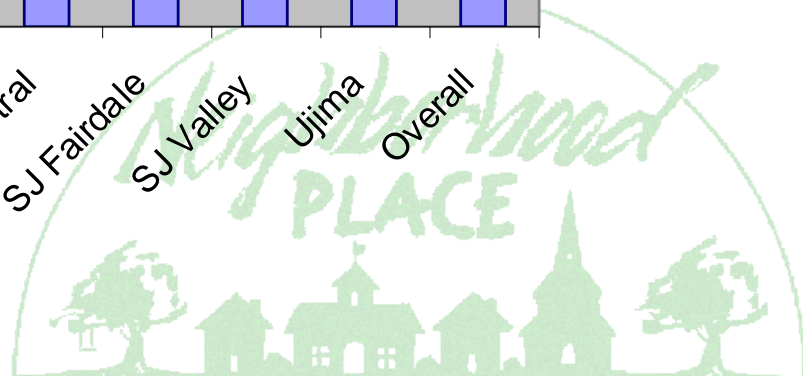
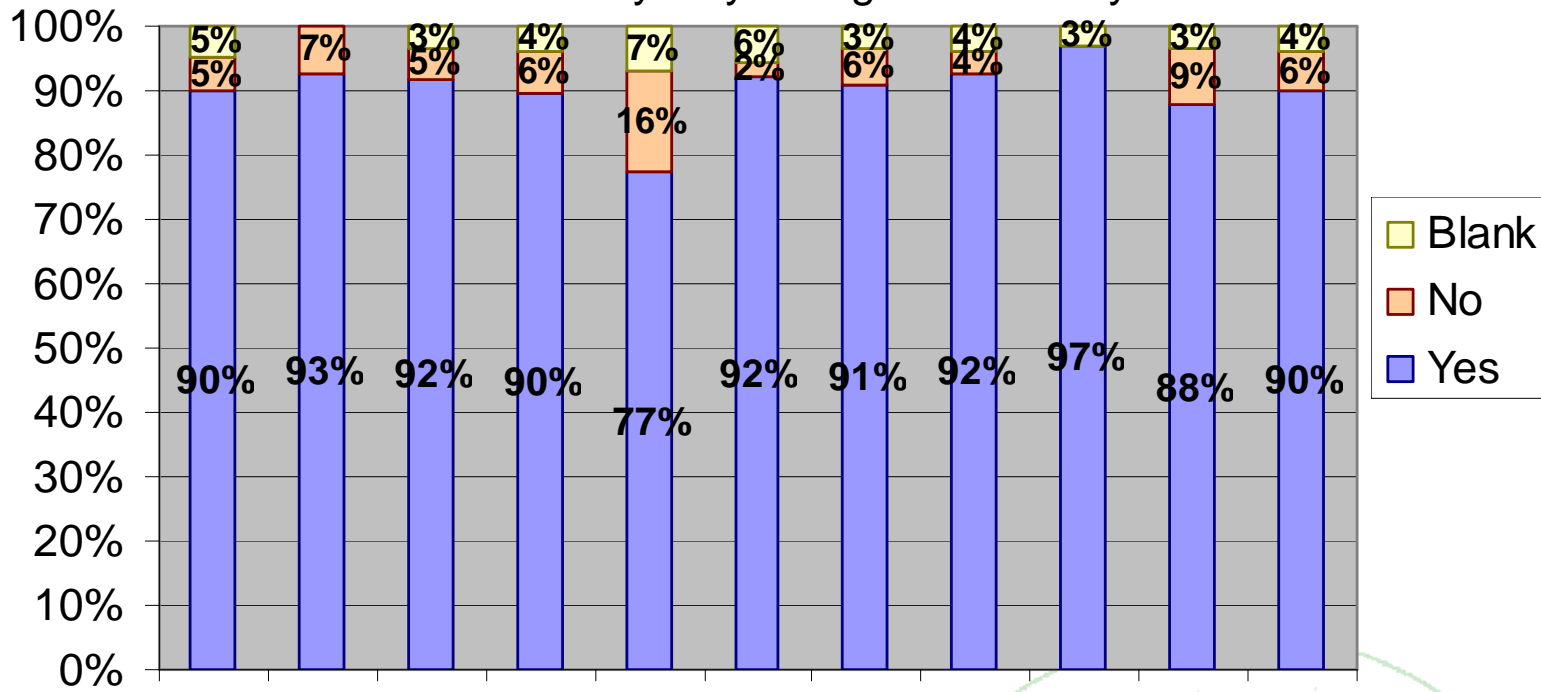
1. Did you receive needed information?



Client Satisfaction Survey

(continued)

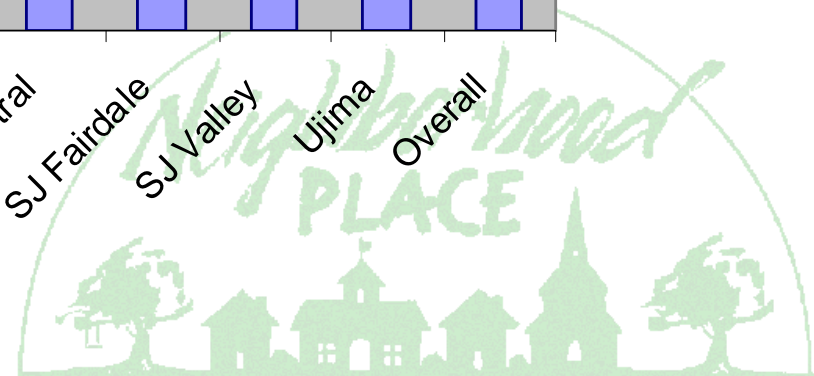
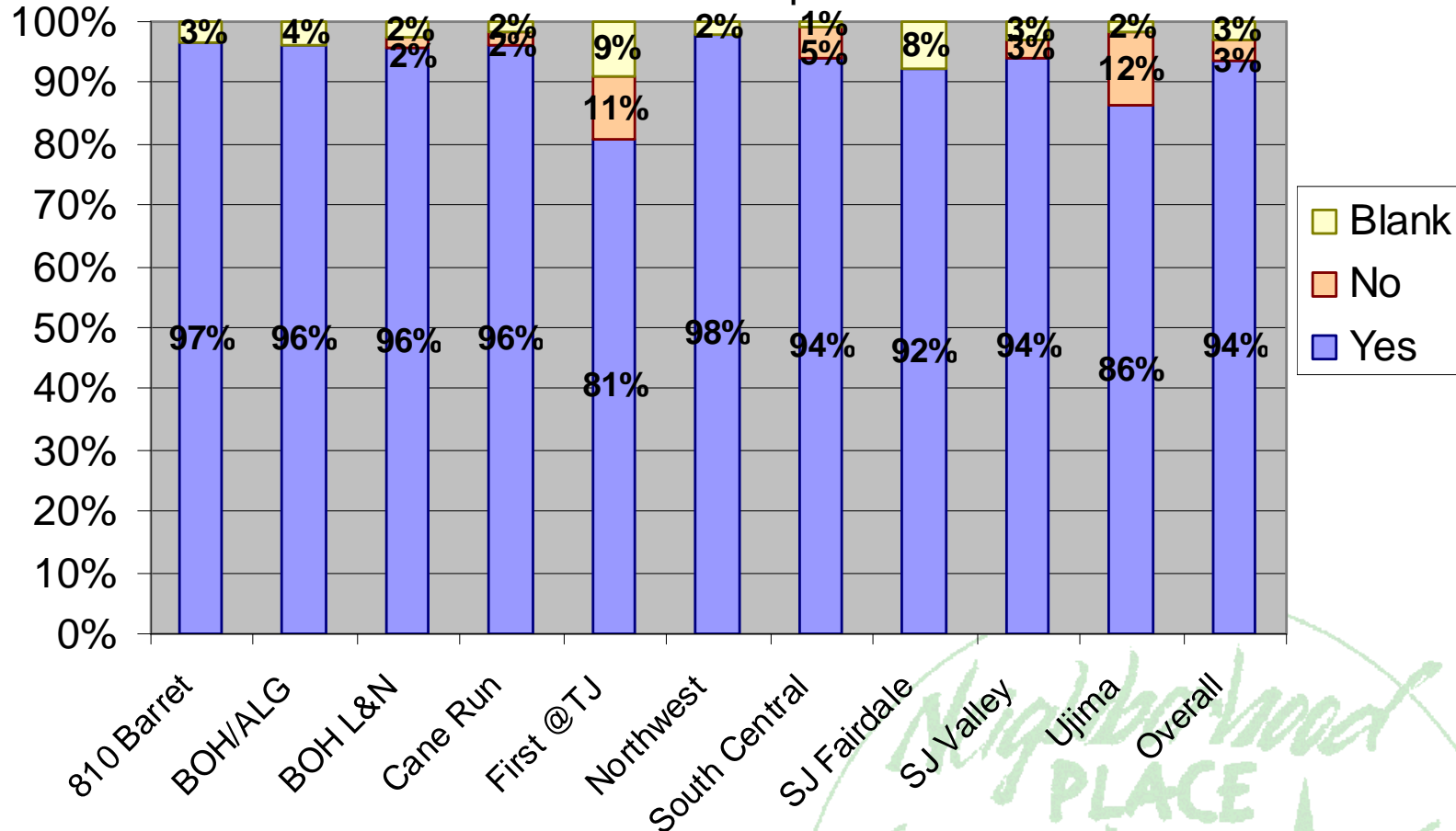
7. Was it easy for you to get here today?



Client Satisfaction Survey

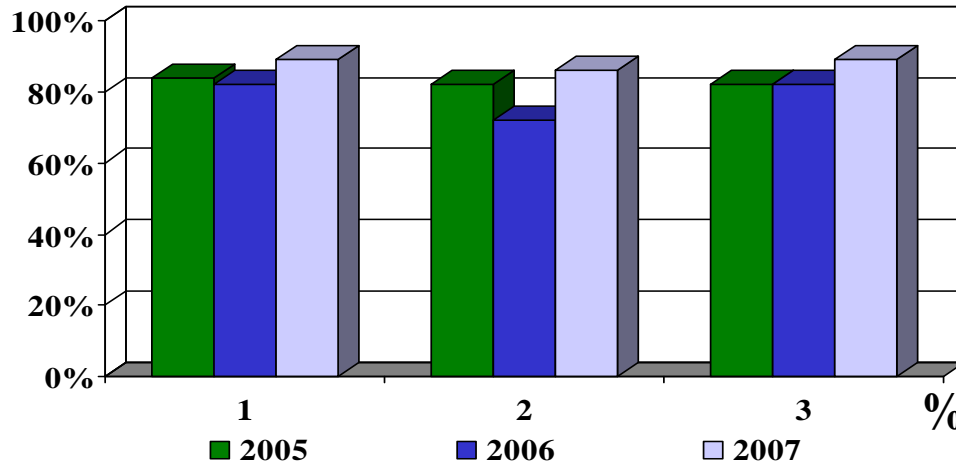
(continued)

17. Would you recommend Neighborhood Place to someone who needs help?



Staff Collaboration Survey

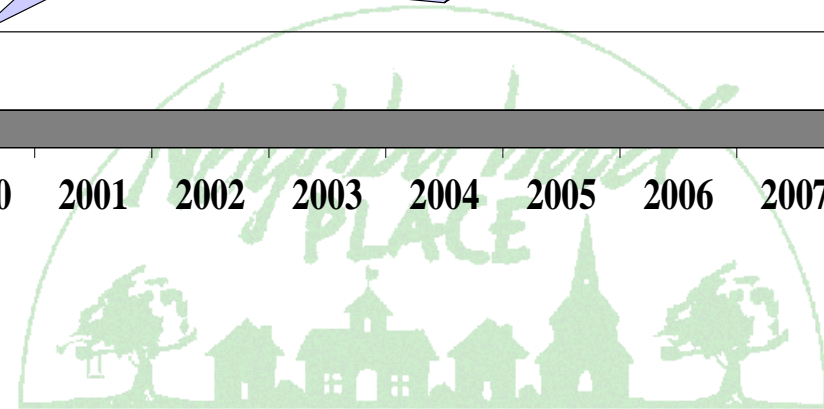
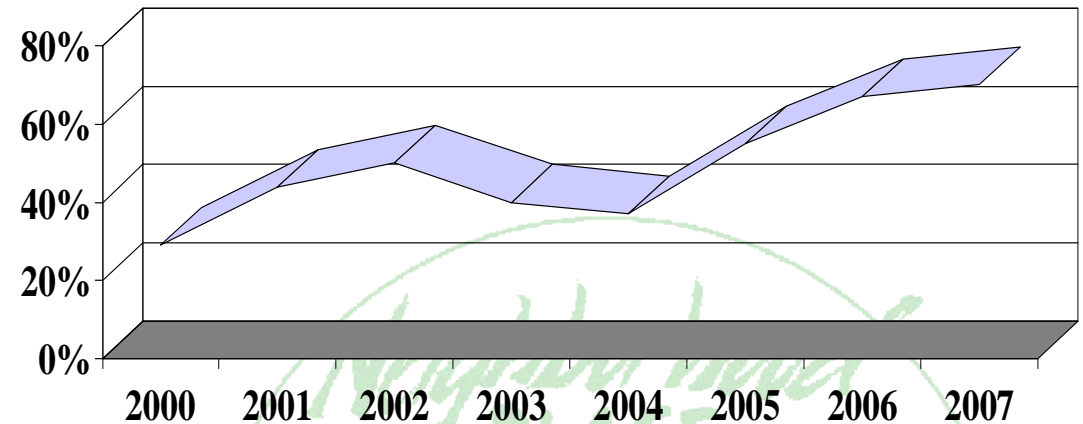
% of Collaboration Responses



Neighborhood Place staff are surveyed annually in order to determine team functioning and training needs.

- 1. Understand all services offered through NP**
- 2. Have access to eligibility information**
- 3. Understand roles and connections**

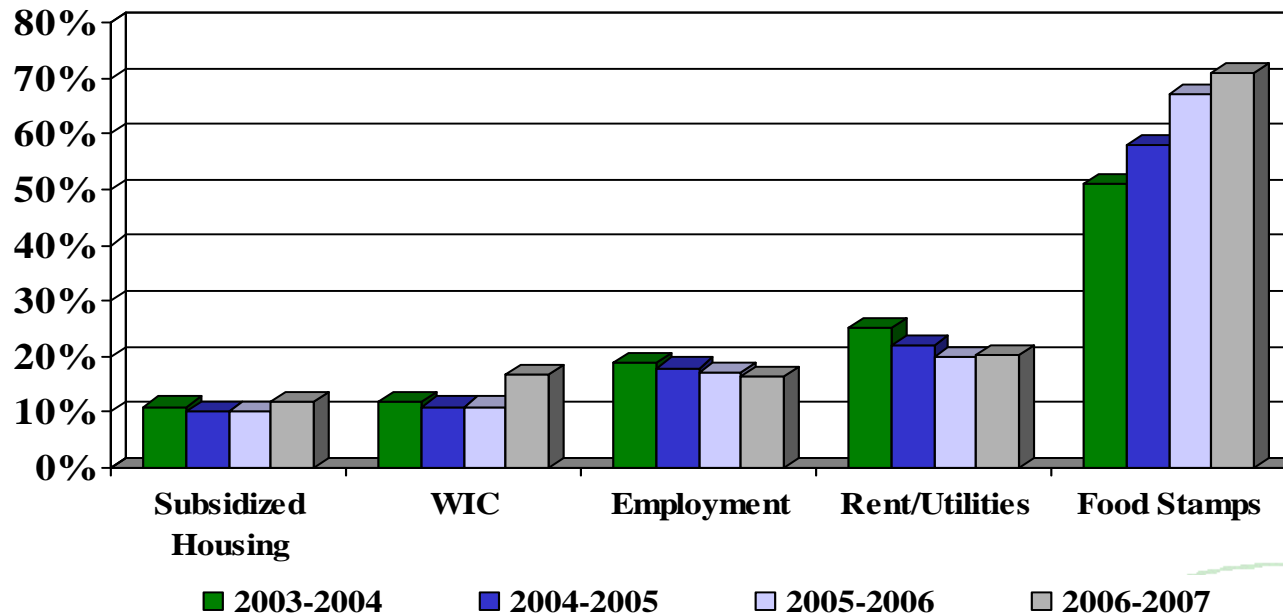
% of Staff with 3+ Years in Neighborhood Place



Client Service Information

When clients come to Neighborhood Place, they are asked to complete a self-assessment form indicating the reason for the visit. The “most requested” services are indicated below.

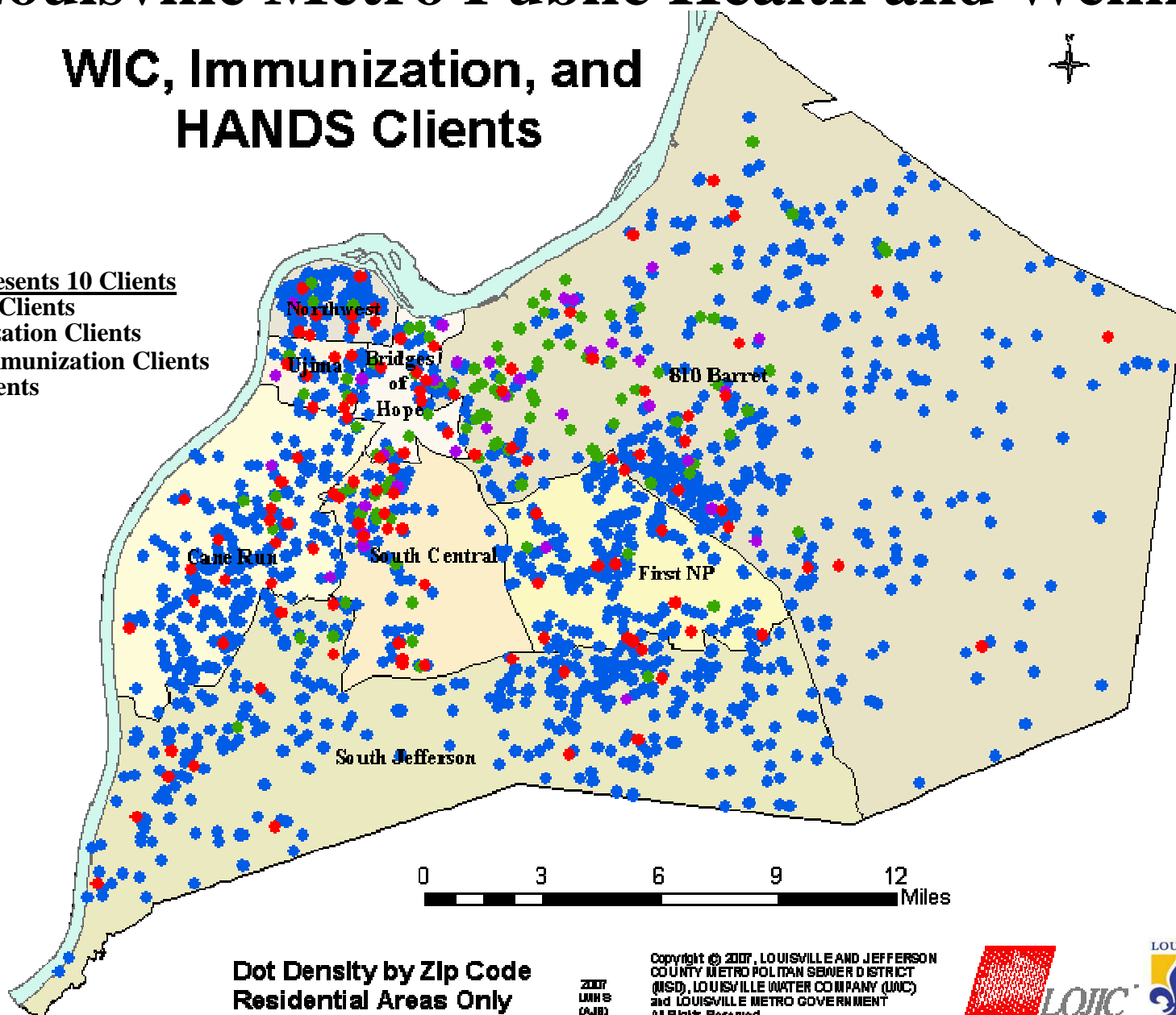
% of Most Requested Services



Louisville Metro Public Health and Wellness

WIC, Immunization, and HANDS Clients

- 1 Dot represents 10 Clients
- HANDS Clients
 - Immunization Clients
 - Child Immunization Clients
 - WIC Clients



**Dot Density by Zip Code
Residential Areas Only**

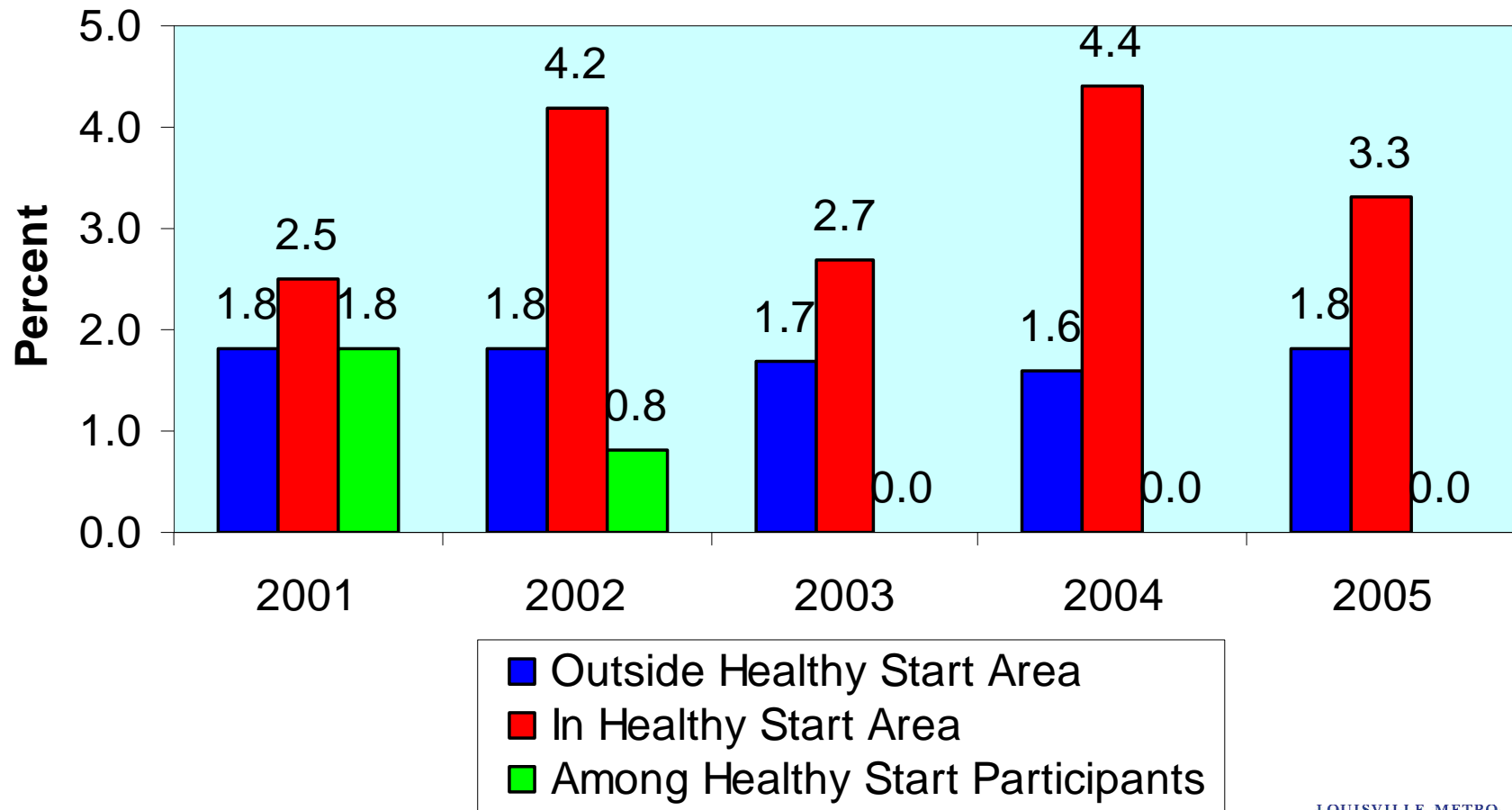
2007
LJHC
(A/R)

Copyright © 2007, LOUISVILLE AND JEFFERSON
COUNTY METRO POLITAN SEWER DISTRICT
(MSD), LOUISVILLE WATER COMPANY (LWC)
and LOUISVILLE METRO GOVERNMENT
All Rights Reserved.



Louisville Metro Public Health and Wellness

Very Low Birth Weight Rates*



*Data obtained from provisional 2005 records

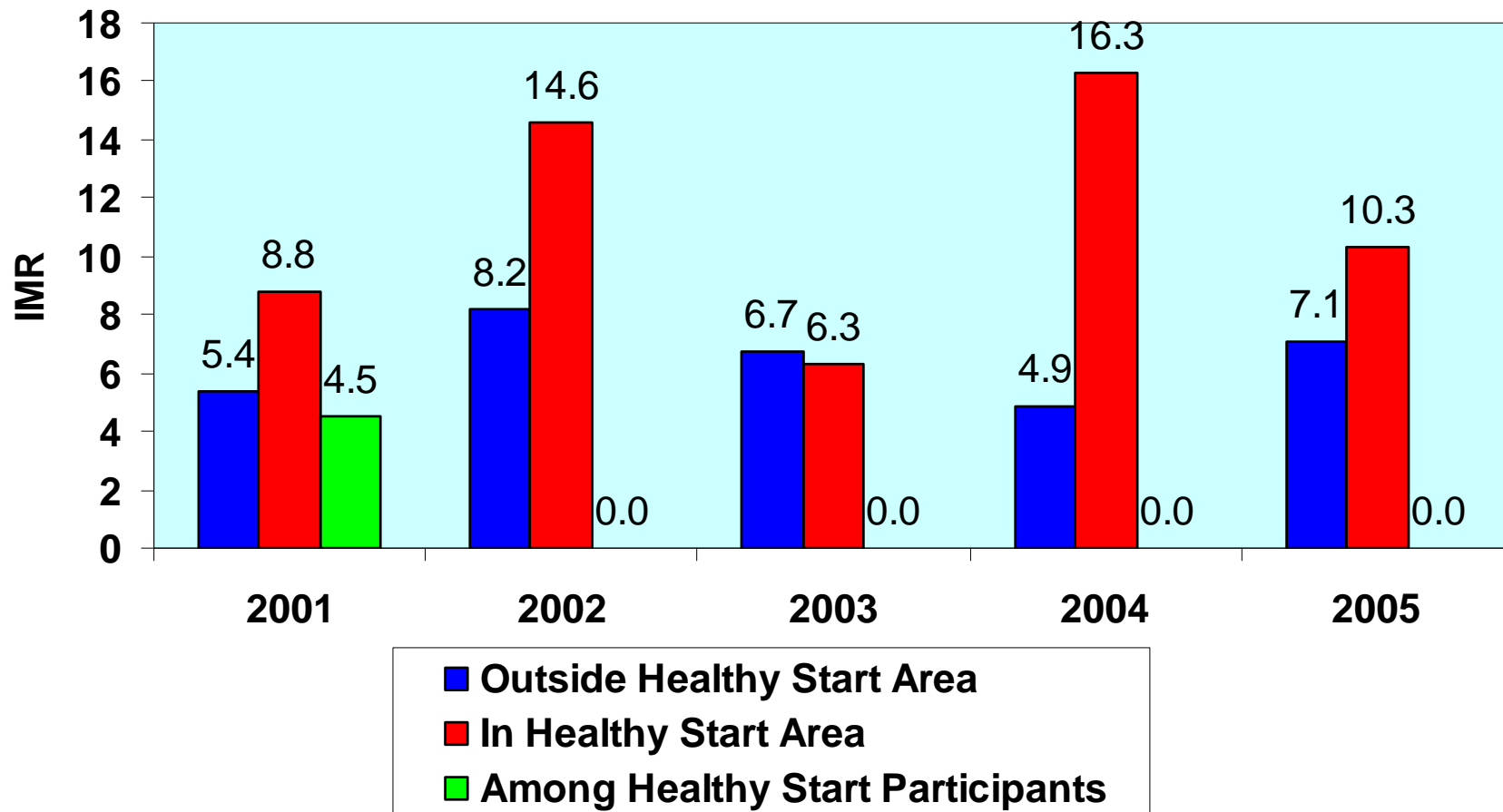
5/23/2008

2007 Neighborhood Place Services and Outcomes Report



Louisville Metro Public Health and Wellness

Infant Mortality Rate per 1,000 Live Births



*Data obtained from provisional 2005 records

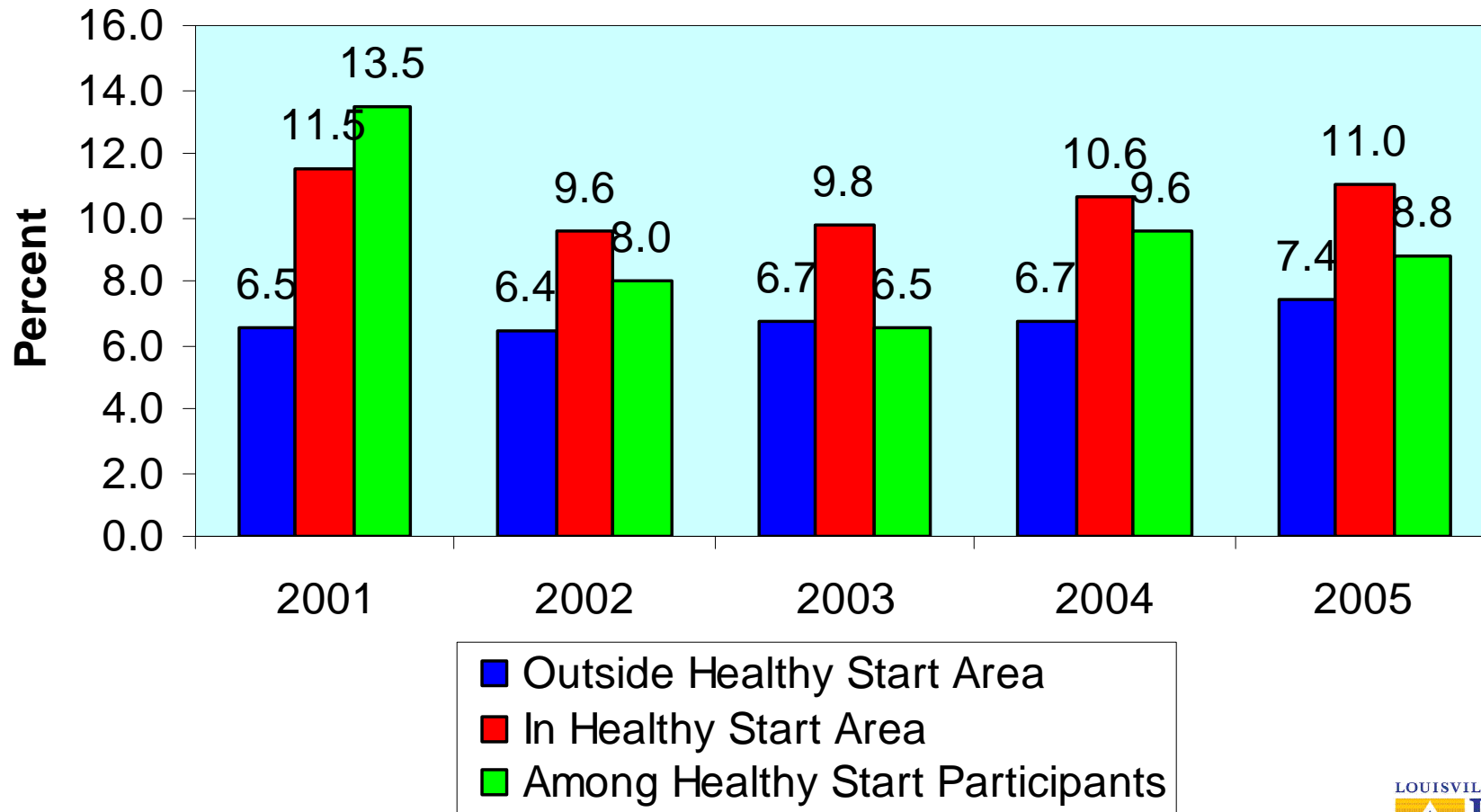
5/23/2008

2007 Neighborhood Place Services and Outcomes Report



Louisville Metro Public Health and Wellness

Low Birth Weight Births 1500-2500gms*



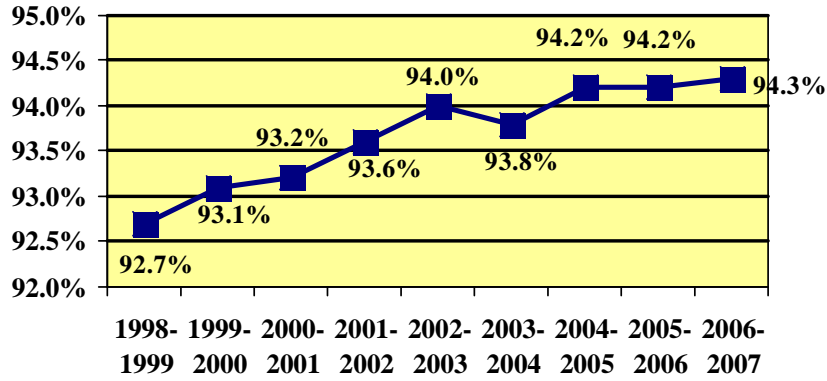
*Data obtained from provisional 2005 records

5/23/2008

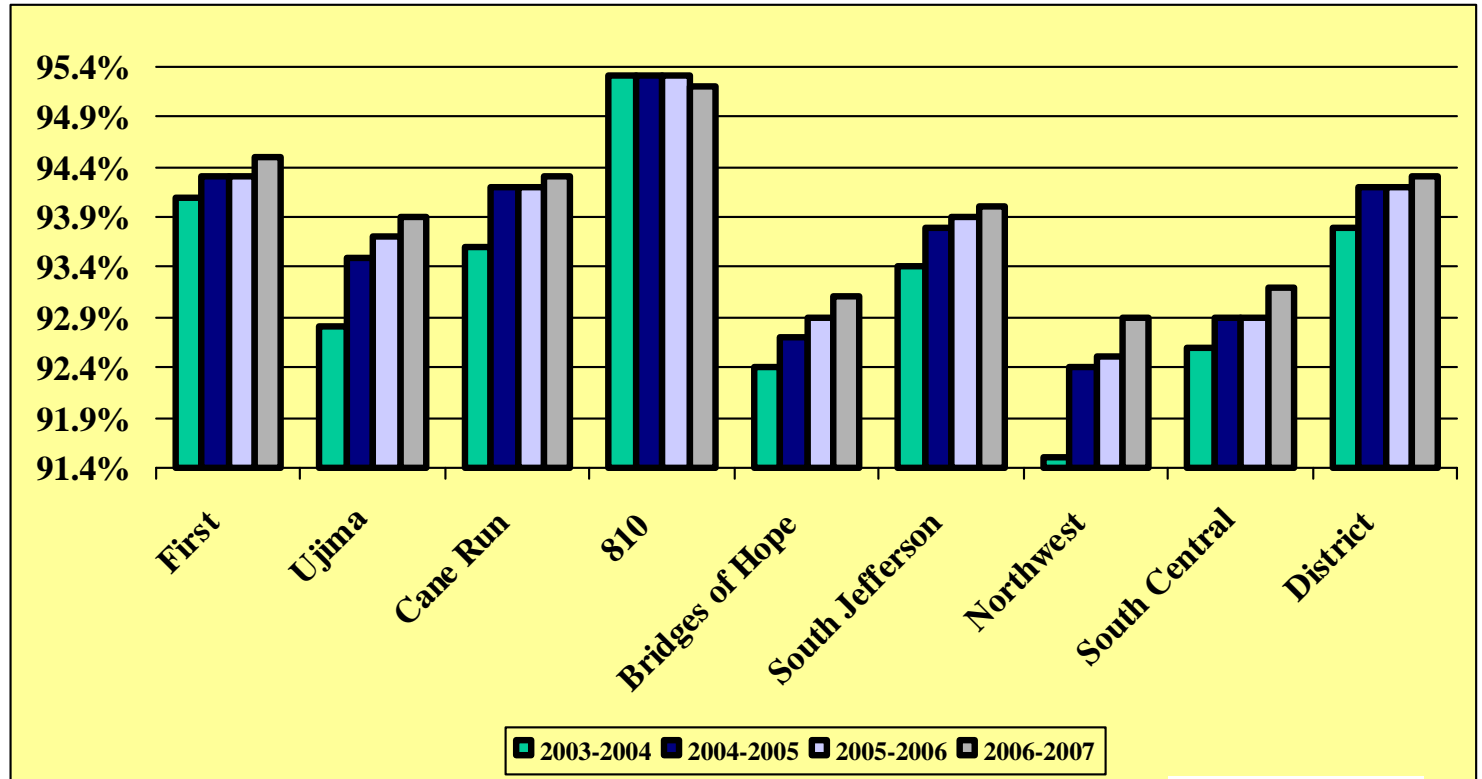
2007 Neighborhood Place Services and Outcomes Report



District Attendance Percentages - Trend Data



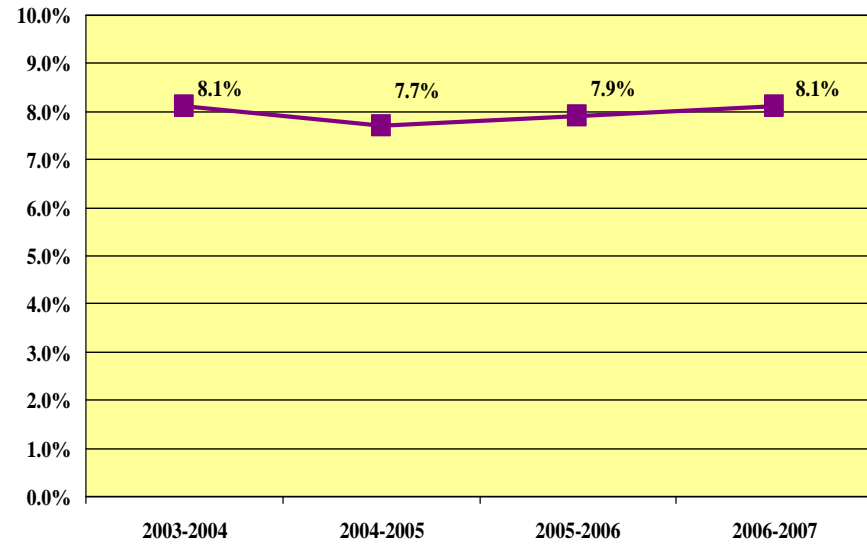
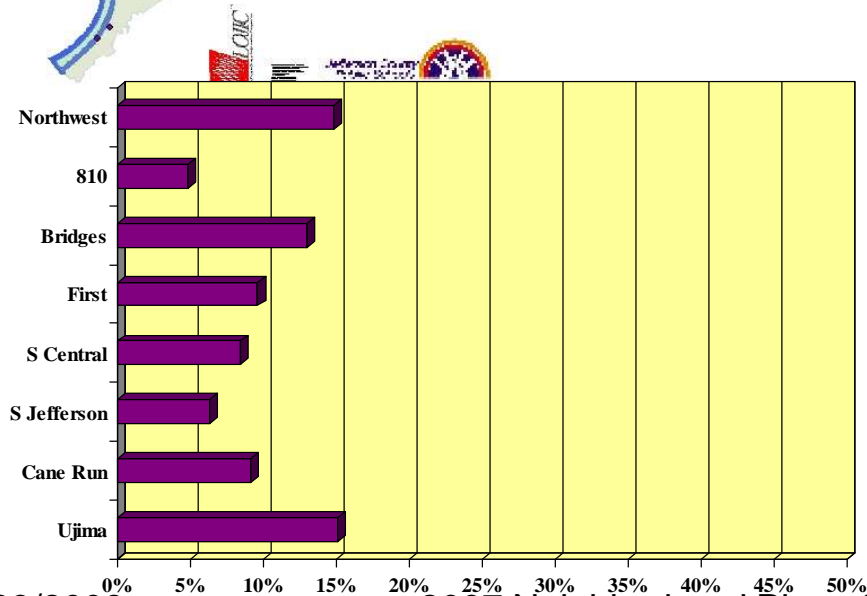
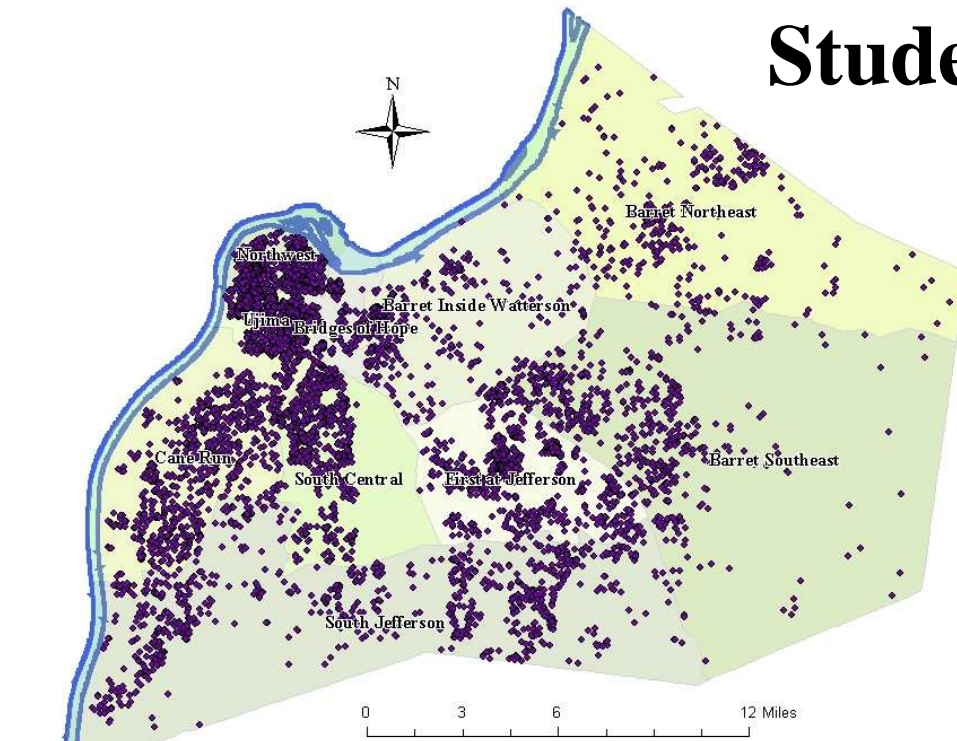
School Attendance Trend Data



Student Suspensions

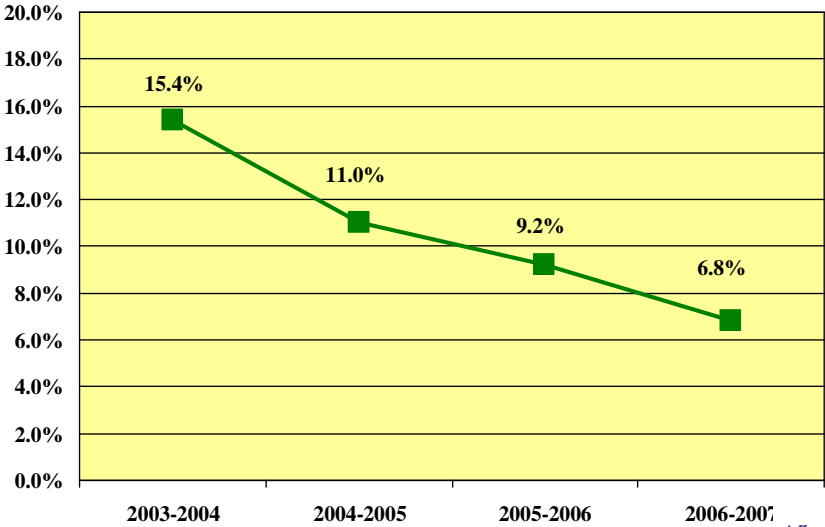
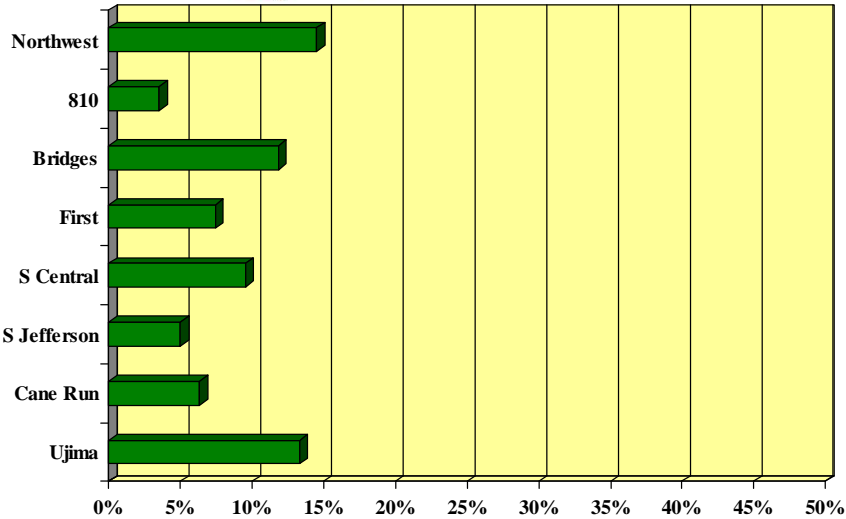
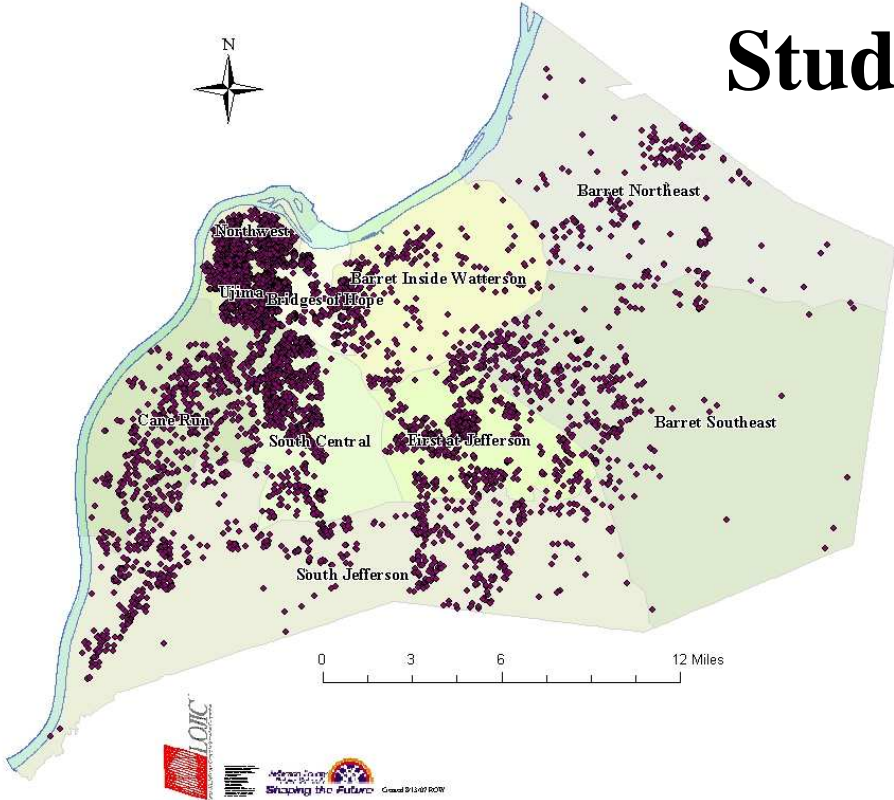
The map on the left shows school suspensions by student residence. There was a total of 7,356 suspensions in school year 2006-2007.

The bar graph in the lower left shows the same data displayed as a percentage within each NP area.



Students at Academic Risk

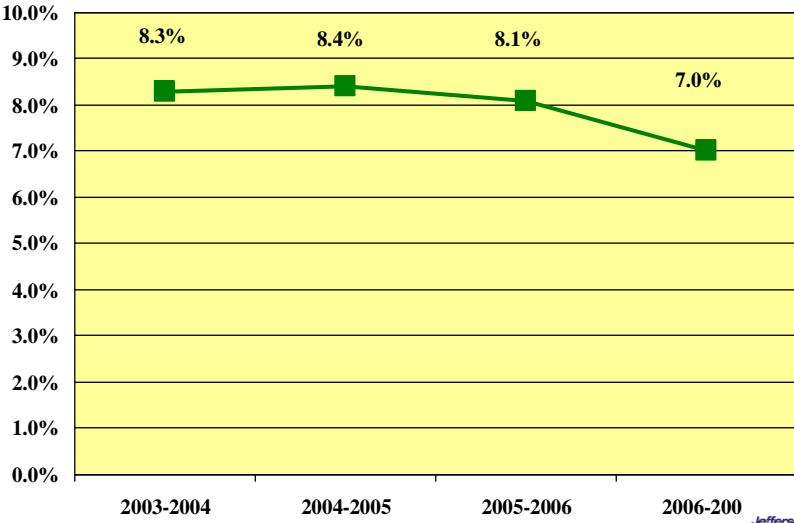
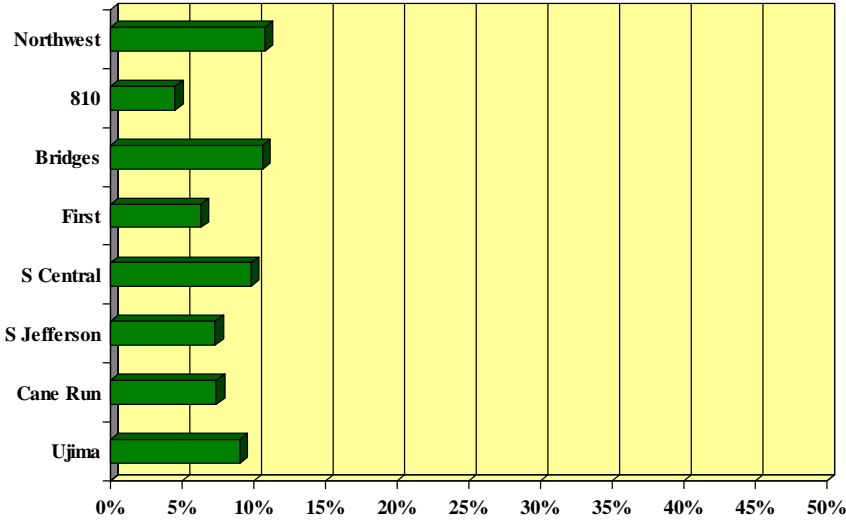
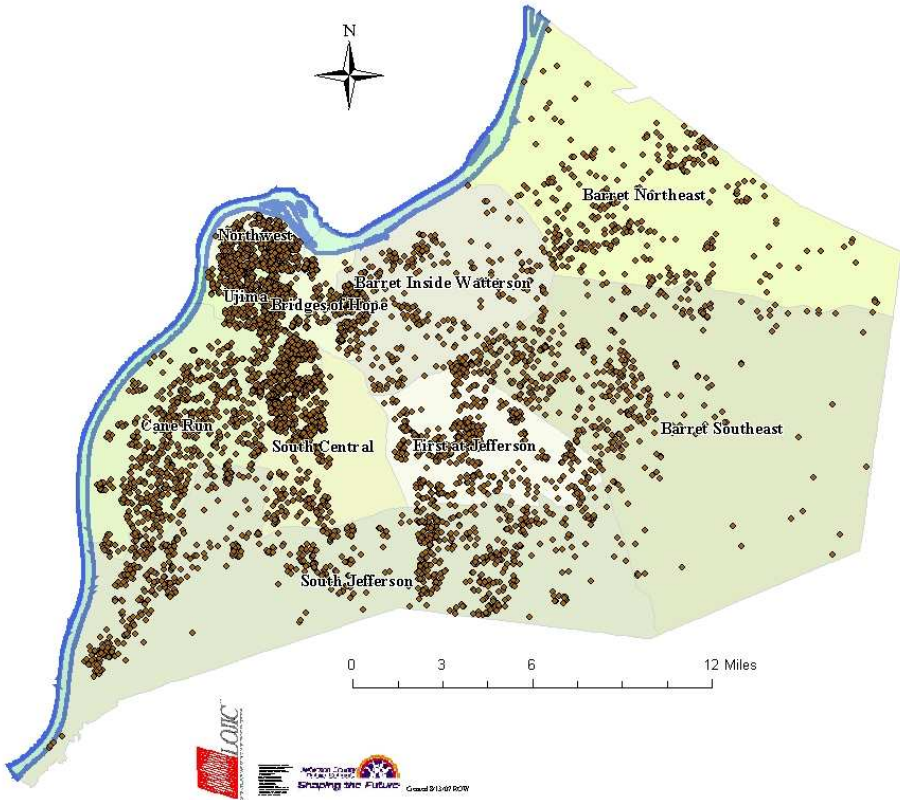
Students who perform in the lowest third on their most recent standardized reading test can be considered at-risk for academic difficulties and warrant further review and/or support. Over the past four years there has been a steady decline of students who are identified as being at-risk as indicated by the graph below. The map and the graph in the lower left represents those NP areas with the most concentration of at-risk students for school year 2006-2007 (N = 6,164).



Truant Students

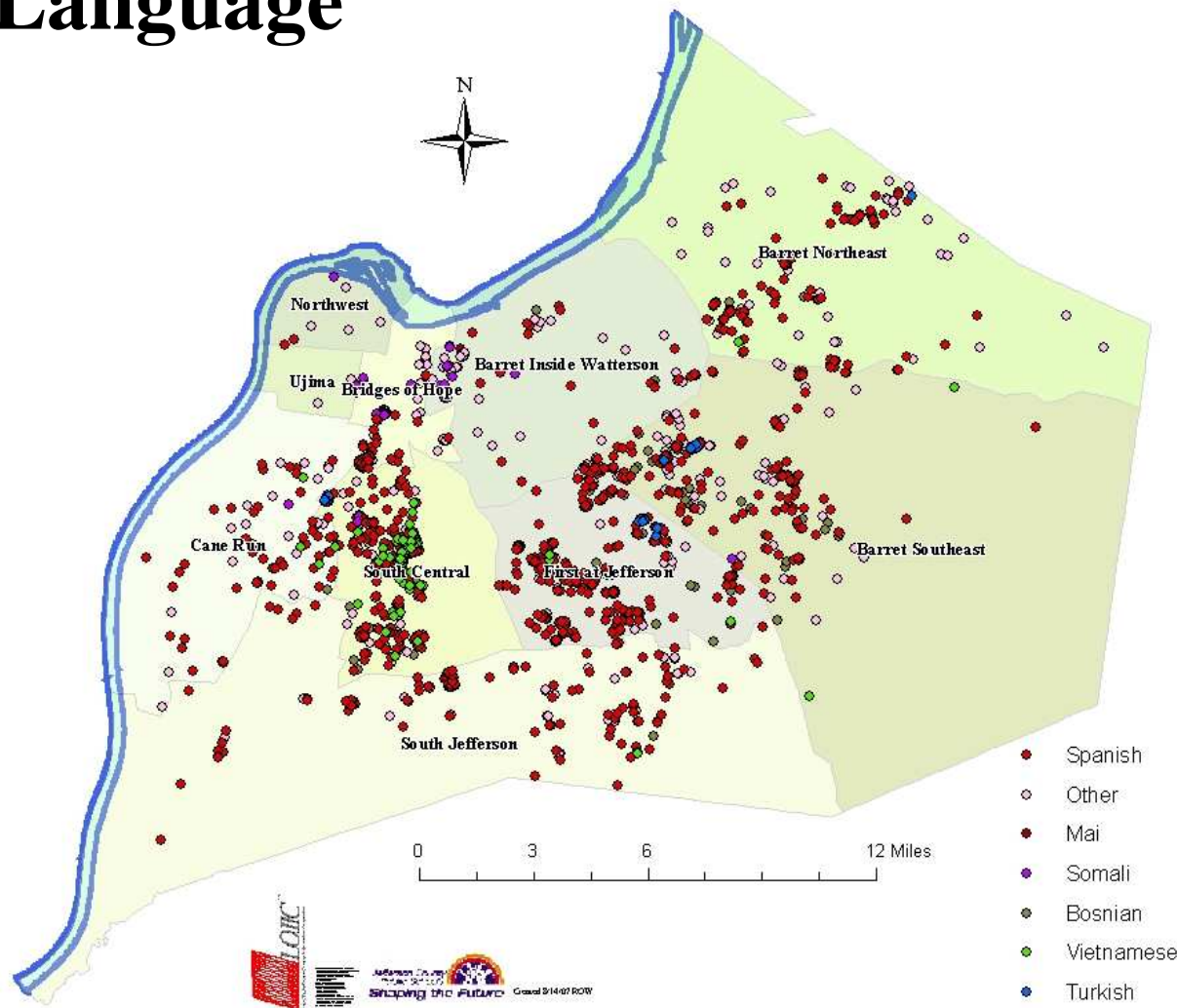
Truant students are defined as those who have experienced absences greater than 25 days. For school year 2006-2007 there were 6,349 students who fell into this category or 7.0% of enrollment. That represents a decline in the number of truant students when compared to previous years as indicated in the graph below.

The bar graph in the lower left shows the same data displayed as a percentage within each NP area. The map demonstrates the data by student residence.



English as a Second Language

ESL students who request language assistance or other school-related services are asked to identify their language type. For School Year 2006-2007 that number was 3,025. The map shows the distribution by language spoken.



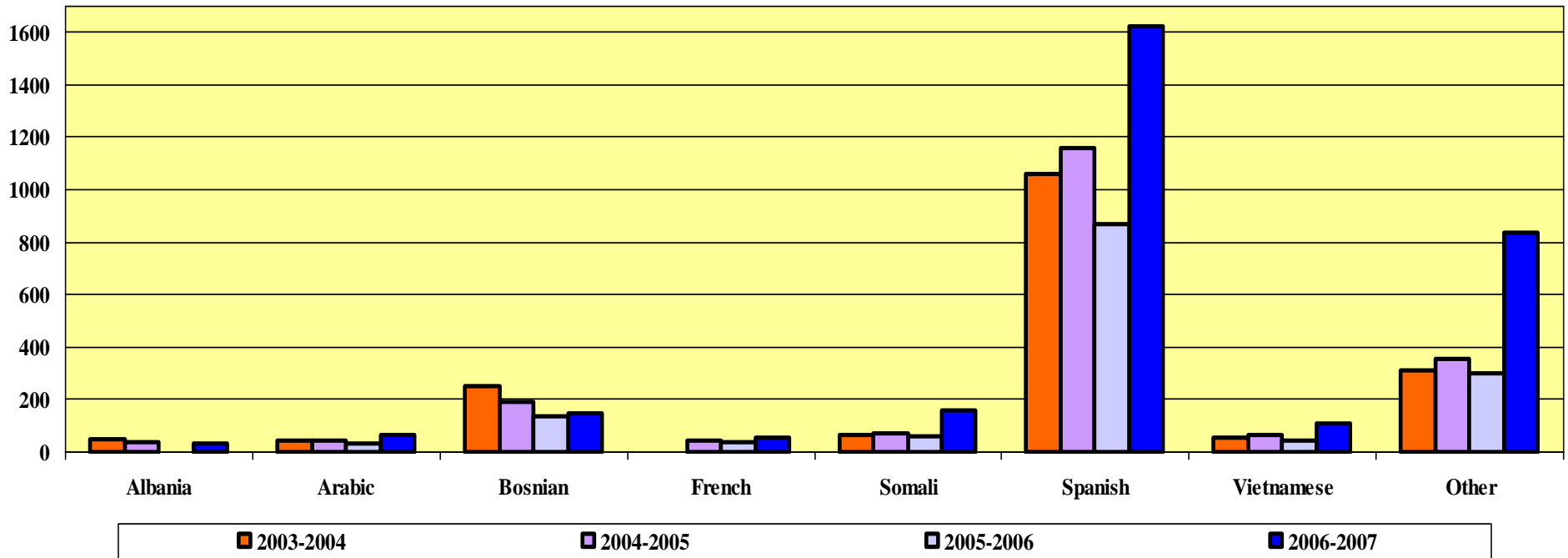
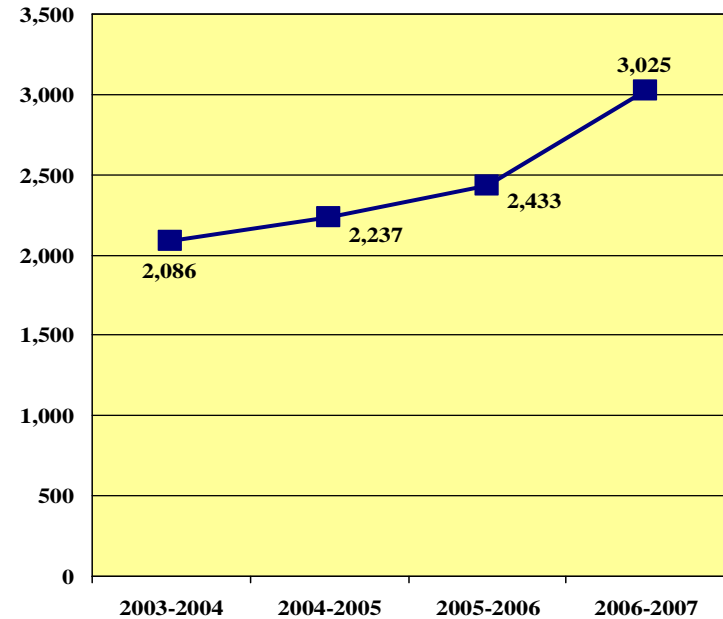
The top seven identified languages are:

- 54.0% = Spanish
- 6.0% = Other
- 5.8% = Mai Mai
- 5.2% = Somali
- 4.8% = Bosnian
- 3.5% = Vietnamese/French
- 2.6% = Turkish

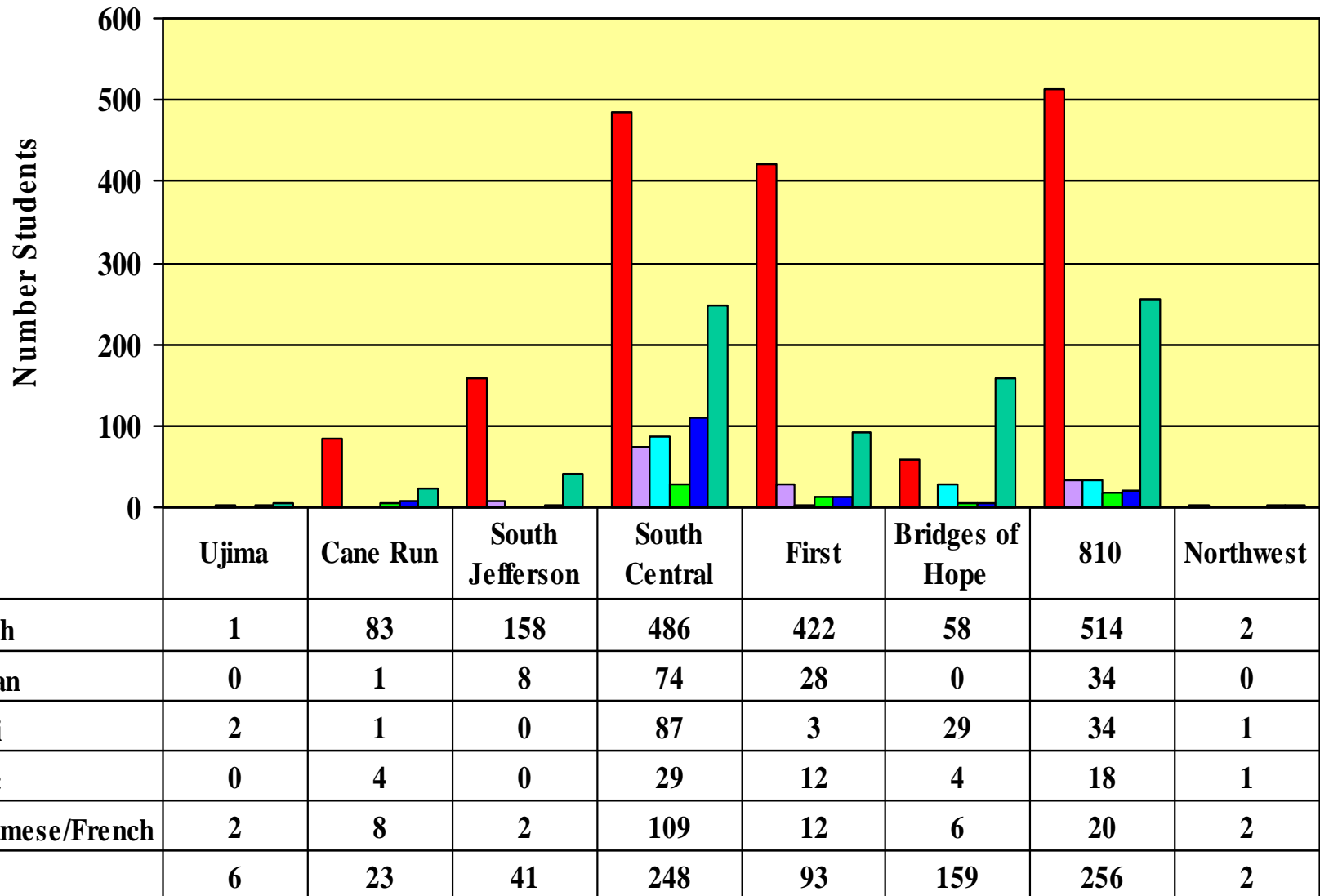
Language Need Trends

The bar graph on the right demonstrates a steady increase in the number of ESL students enrolled in JCPS over the past four years. The line graph at the bottom shows the most frequently identified language trends.

ESL Students

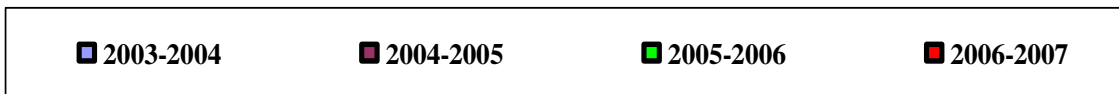
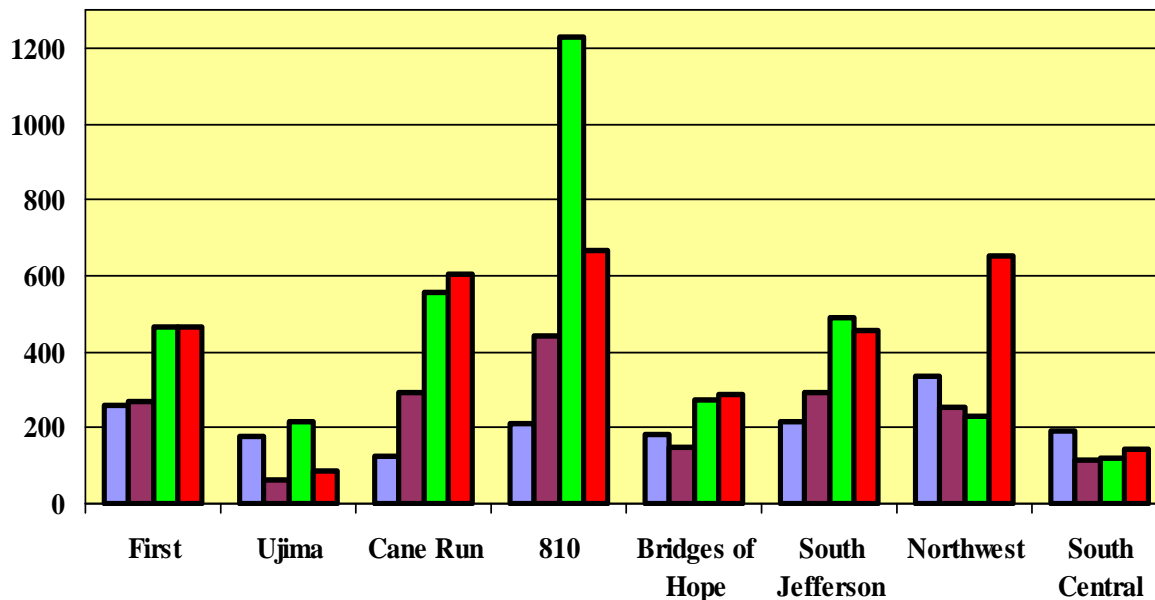
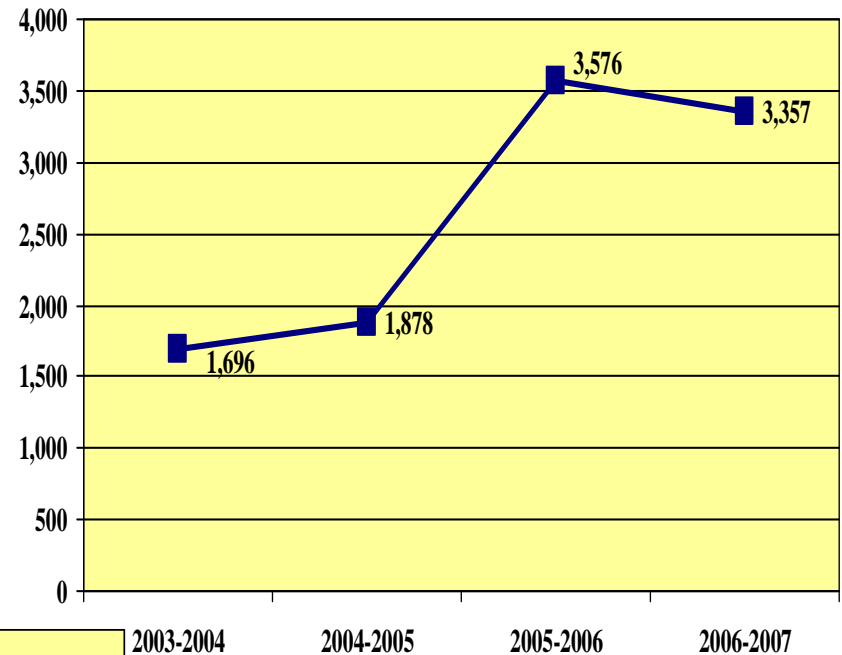


Language Occurrence by Neighborhood Place



FRYSC Referrals To/From NP

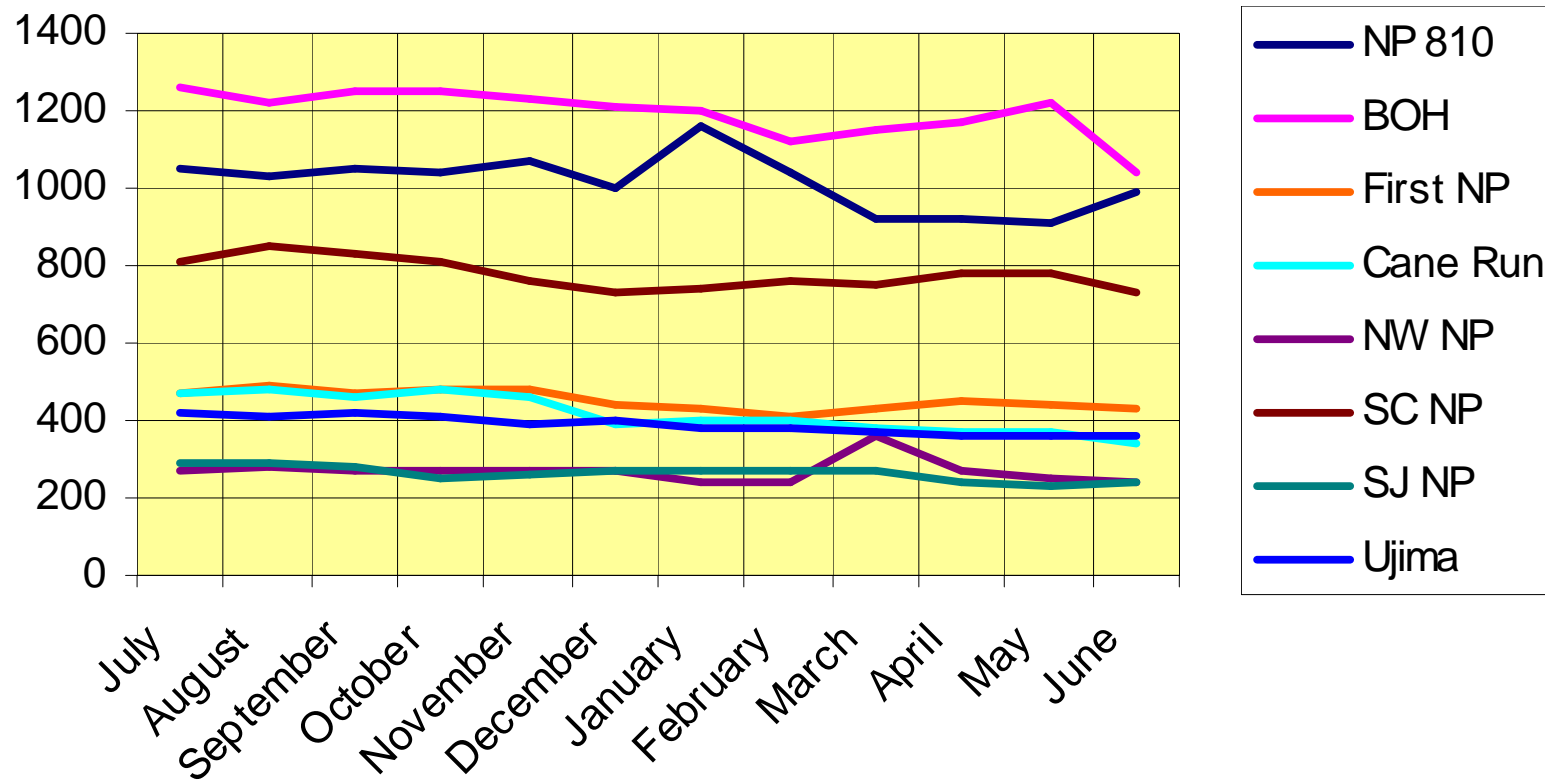
Family Resource and Youth Service Centers (FRYSC) serve as the Neighborhood Place connection with the school system. FRYSC coordinators are charged with helping children and their families reduce the barriers to learning. The graph to the left shows number of referrals by NP area over past four years. The bar graph below displays total referrals by year.



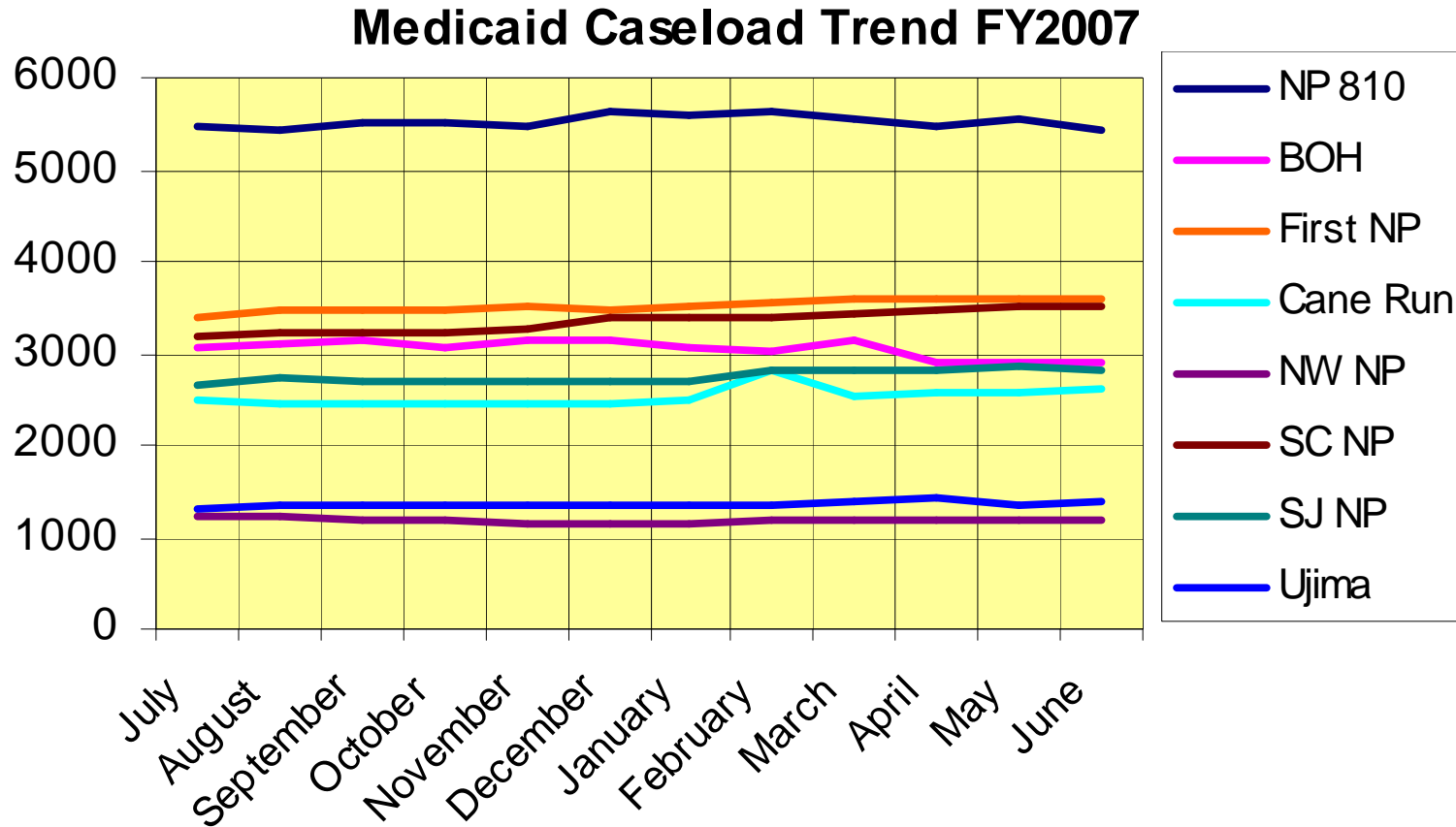
Cabinet for Health and Family Services

Kentucky Cabinet for Health and Family Services' Family Support Teams provide KTAP, Food Stamps and Medicaid services to Neighborhood Place clients

KTAP Caseload Trend FY2007

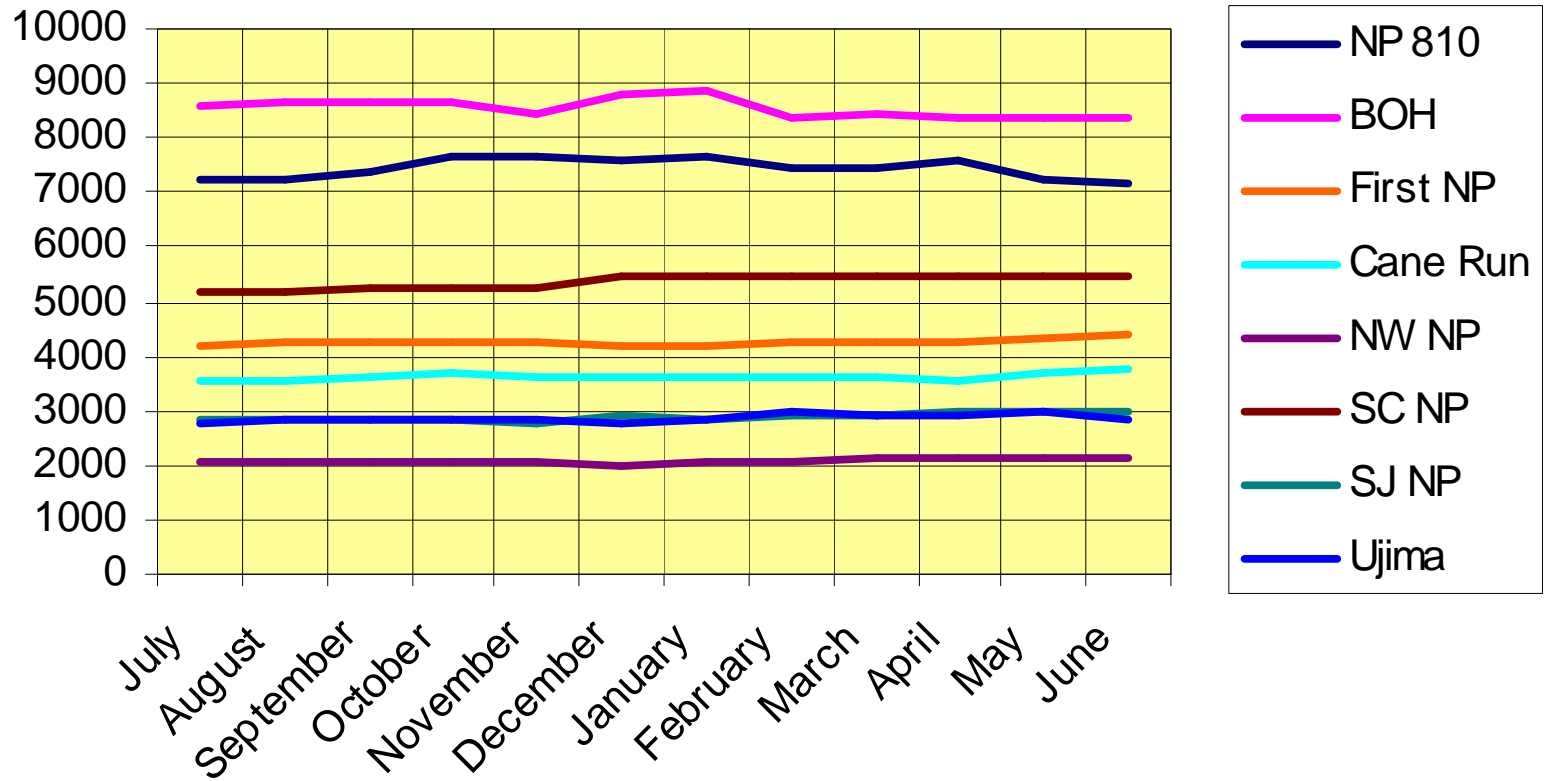


Cabinet for Health and Family Services

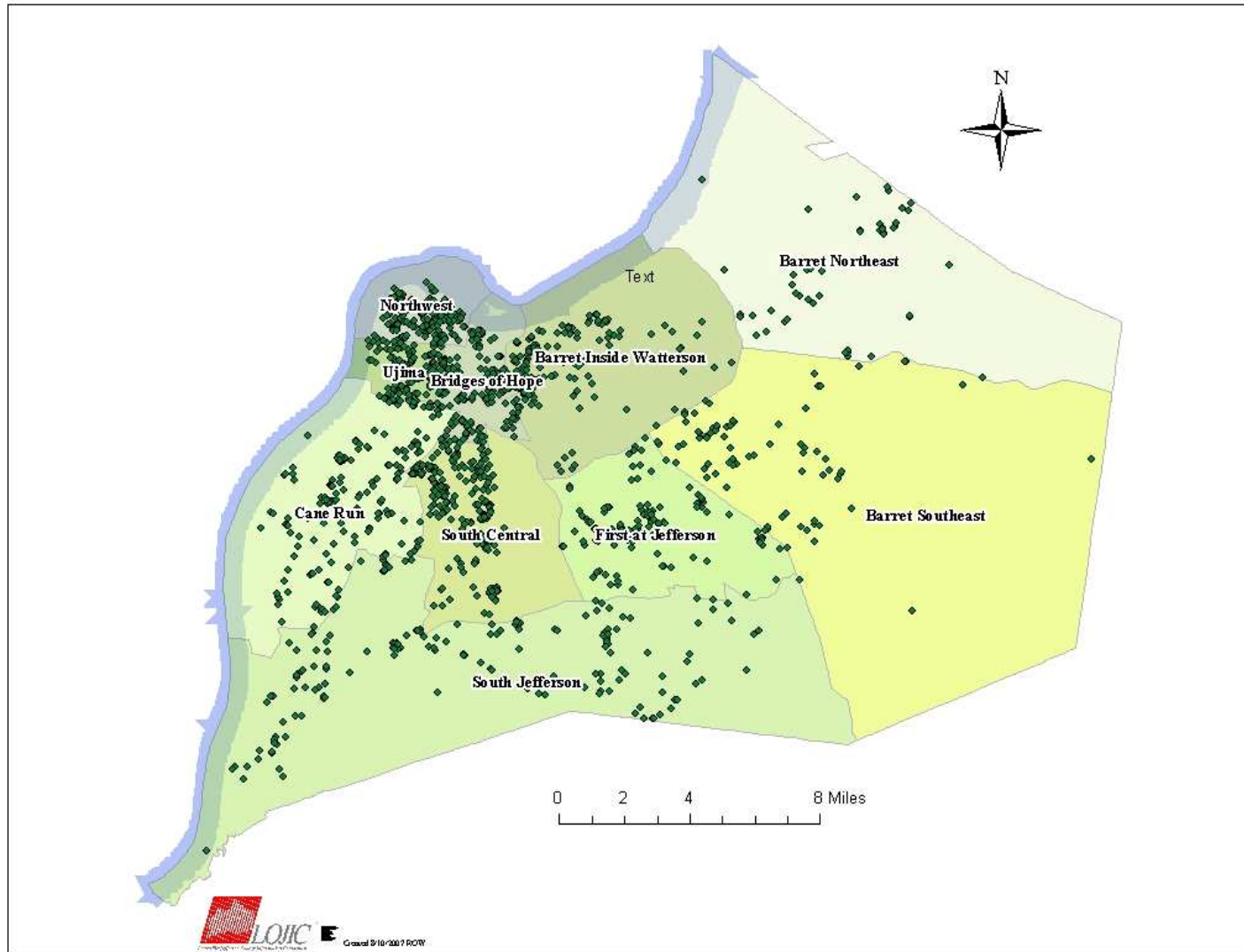


Cabinet for Health and Family Services

Food Stamp Caseload Trend FY2007



Emergency Financial Assistance Requests



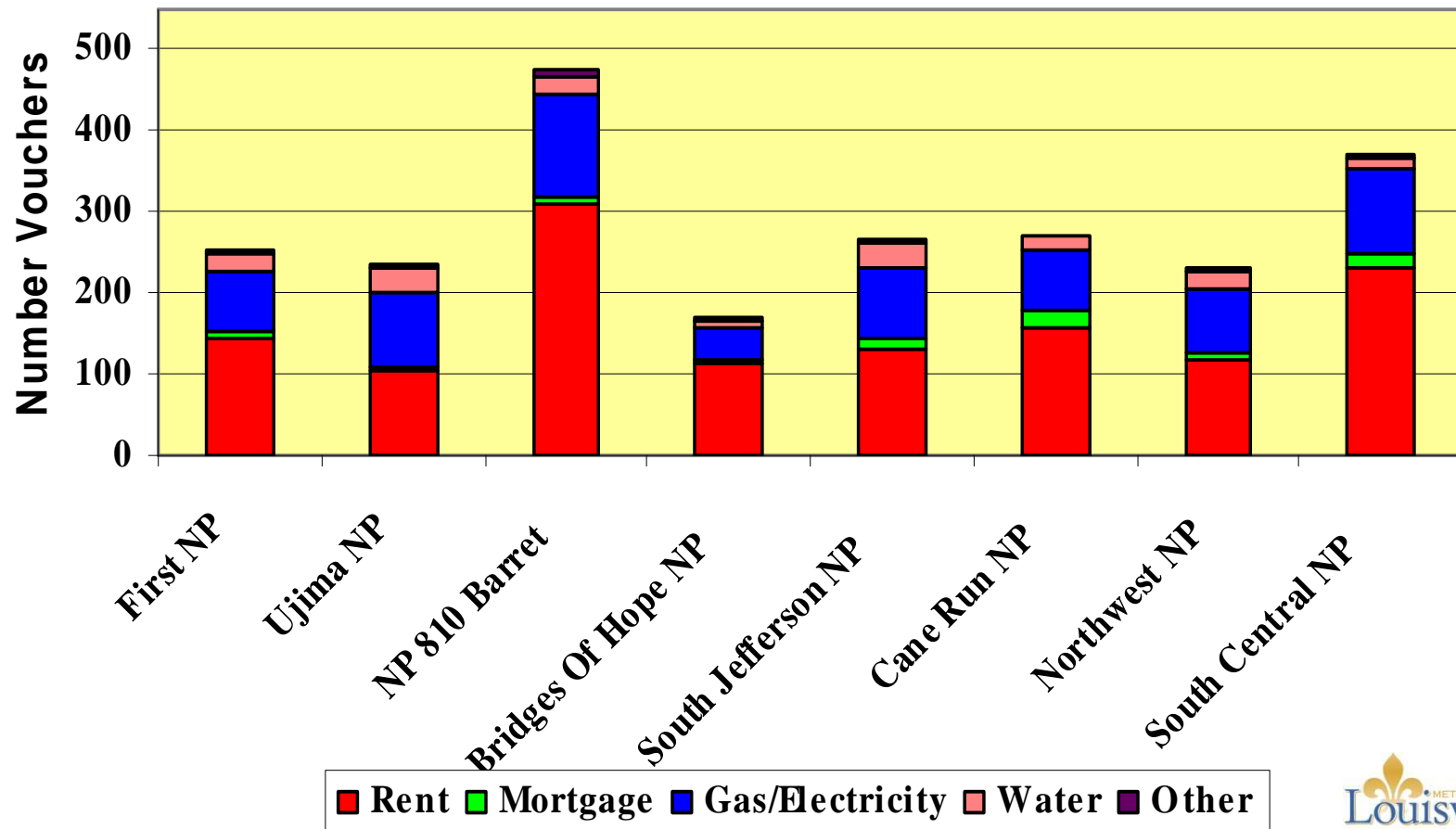
In FY2007, Louisville Metro Housing and Family Services provided emergency financial assistance for shelter (mortgage or rent) and utilities to 1,619 separate addresses.

Emergency Financial Assistance

Emergency Financial Assistance (EFA) is a program of Louisville Metro Housing and Family Services that provides one-time shelter and utility payment assistance for families that have experienced a sudden loss of income.

In FY2007 the program allowed 1,619 households to remain in their home with utilities.

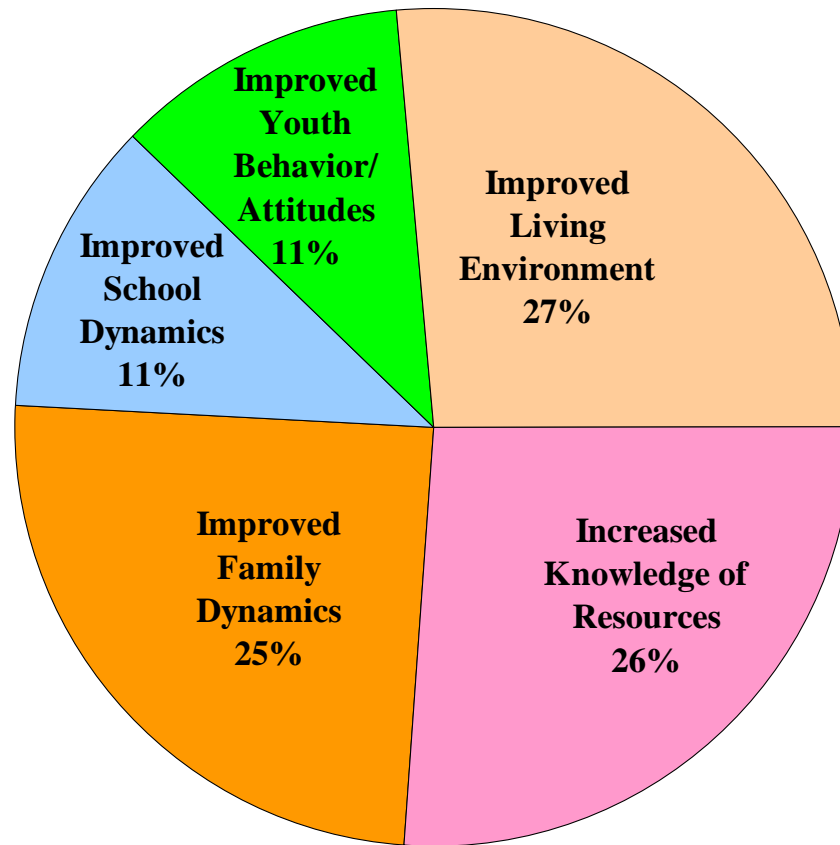
Cases Receiving Financial Assistance Vouchers, July 2006-June 2007



Family Intervention Services (F.I.S.)

FIS is a program of Louisville Metro Housing and Family Services that provides free case management services for families that are experiencing issues with child behavior at home or school, truancy, running away, or impaired functioning of the family.

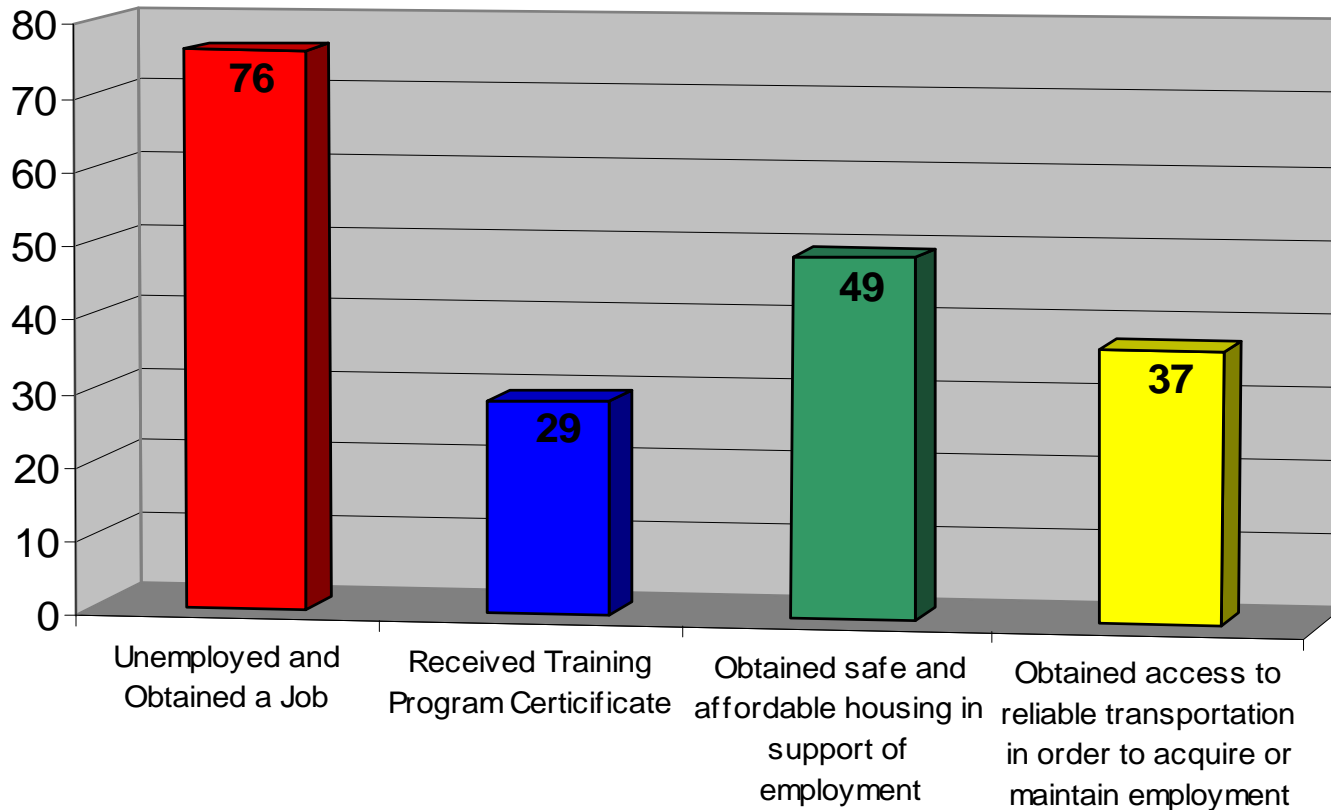
Percentage of Total Outcomes by Category (380 Cases)



Community Action Partnership (CAP) Employment Counselors and Job Training

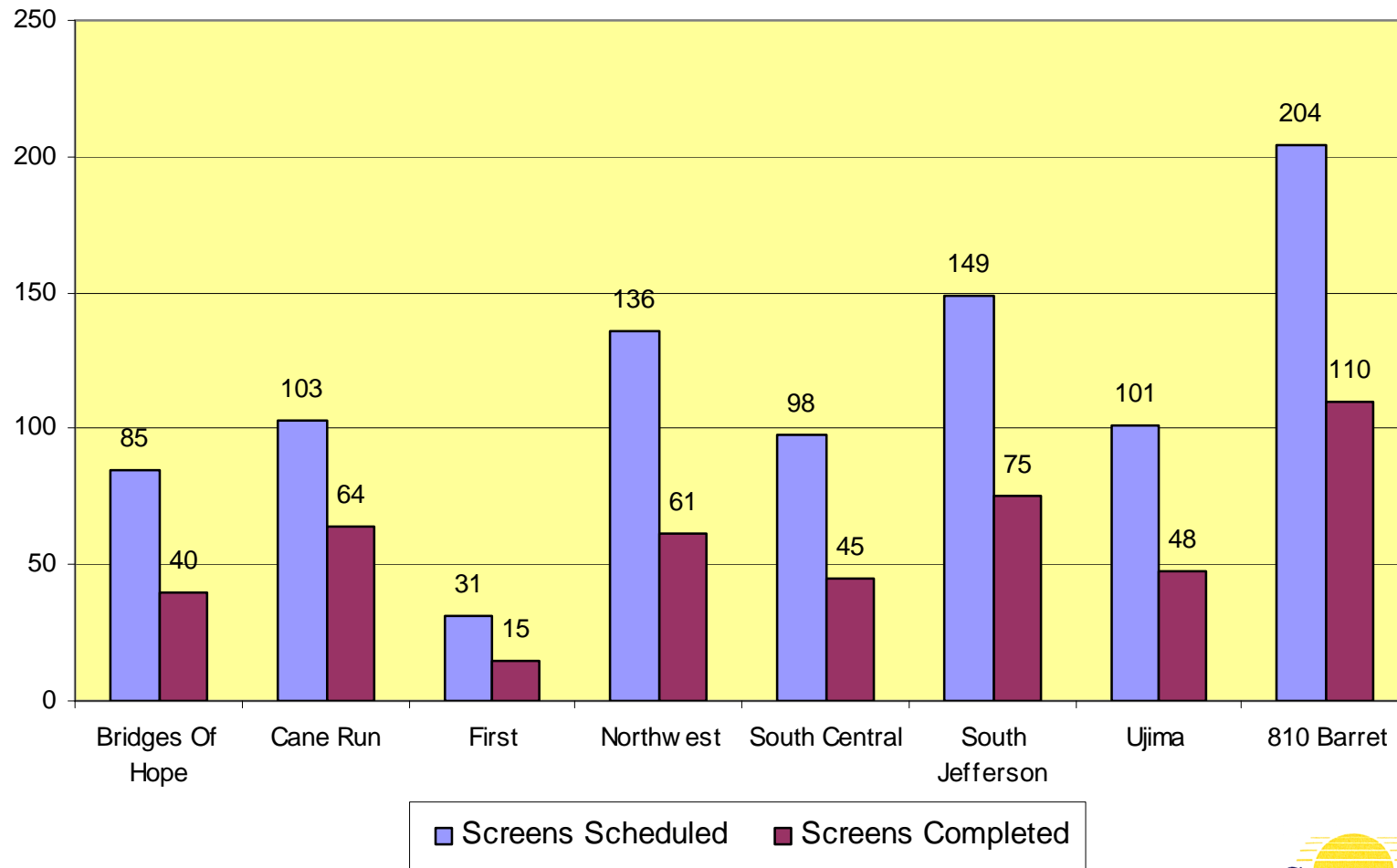
The LMCAP Employment Counselors provide employment related services by means of actively engaging referred work-ready Kentucky Works Program (KWP), Neighborhood Place (NP) clients and walk-in job seekers in defined employment activities.

06-07 Outcomes



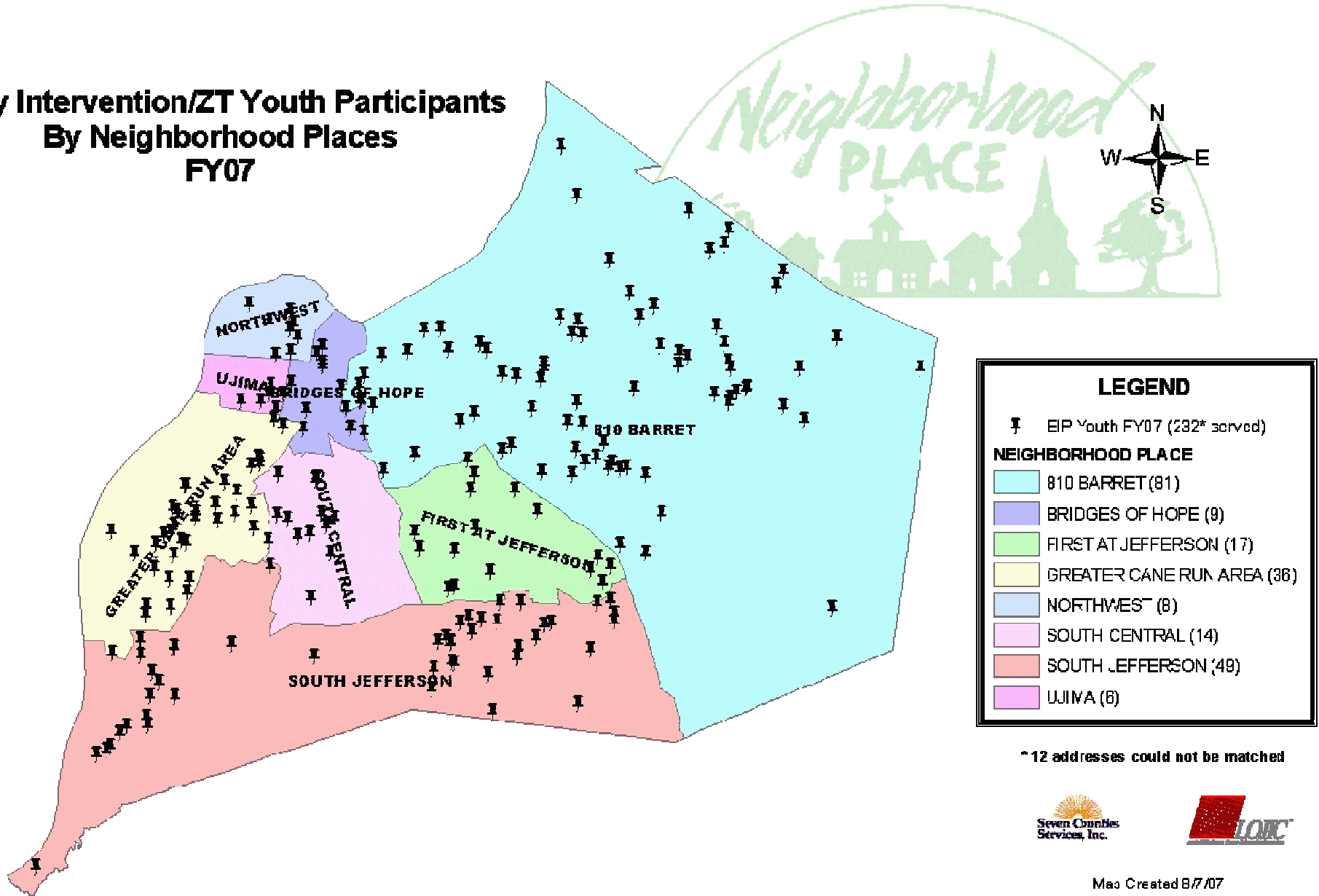
Seven Counties Services

Jefferson Alcohol and Drug Abuse Center Substance Abuse Case Management 2006-2007



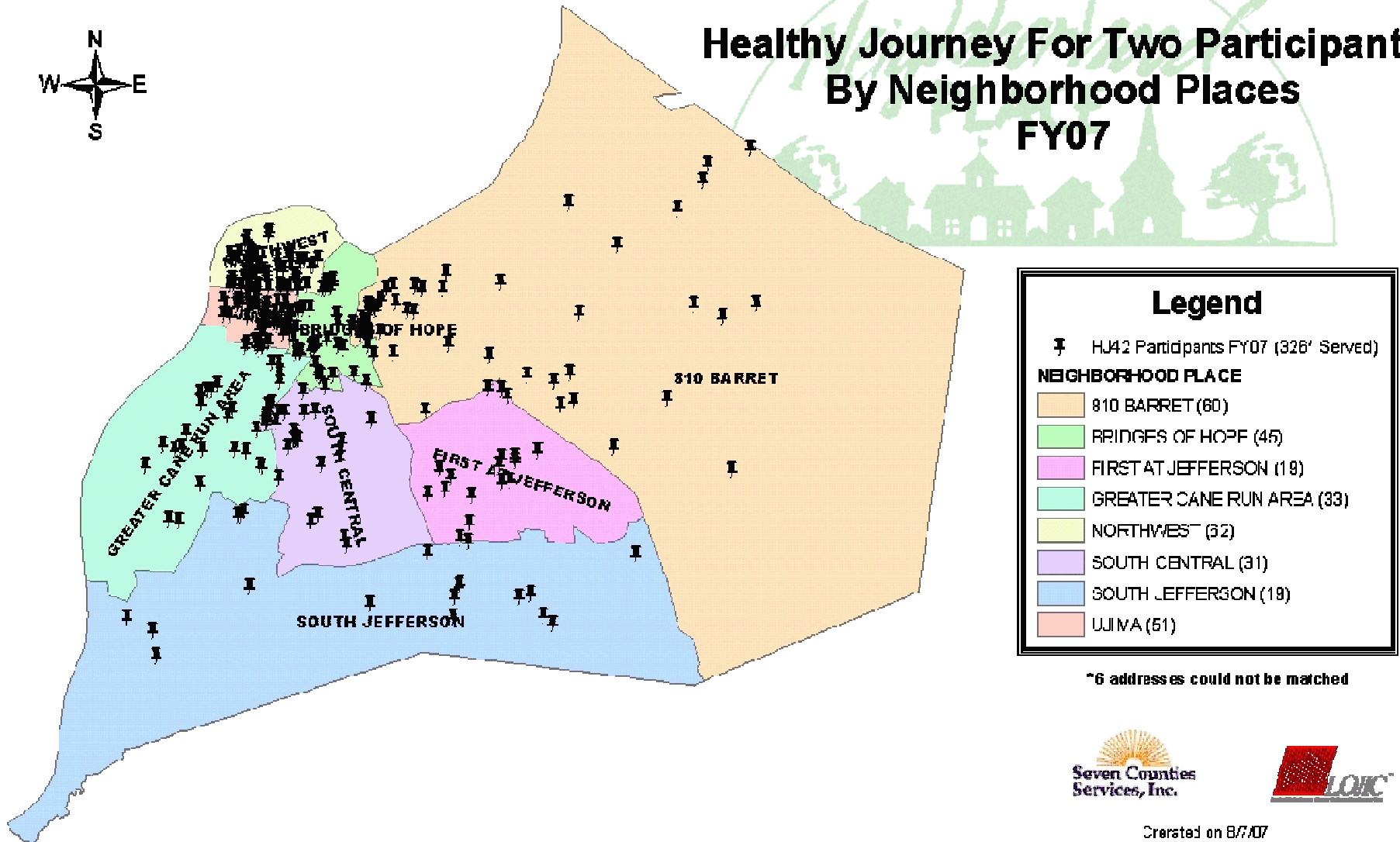
Seven Counties Services

Early Intervention/ZT Youth Participants By Neighborhood Places FY07



Seven Counties Services

Healthy Journey For Two Participants By Neighborhood Places FY07



Seven Counties Services



Number of referrals from Seven Counties Services Crisis and Information Center to Neighborhood Place FY06-07

