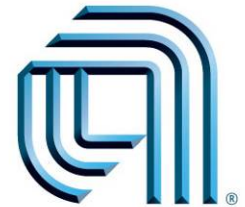


# Applied Materials Education Initiative

Progress Update September 2008

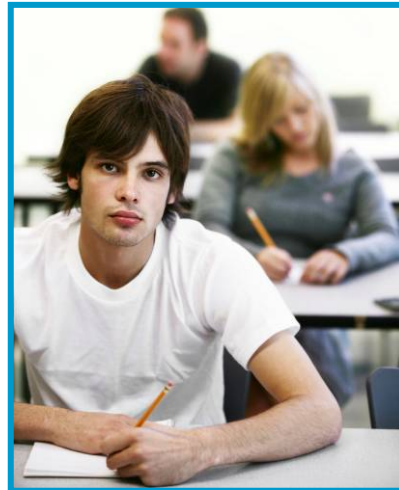
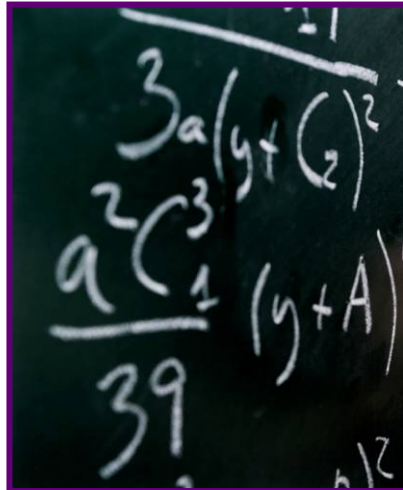
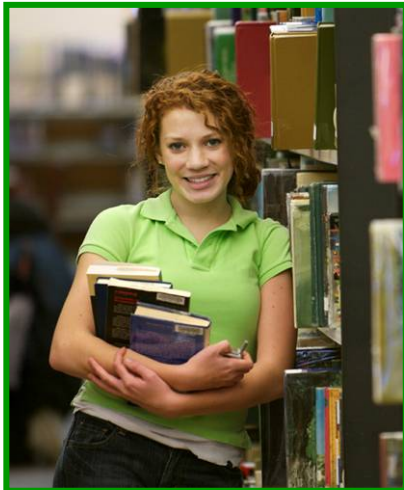


think it. apply it.™

# PURPOSE



*Increase the number of students in San Jose who graduate from high school inspired for and prepared to have success in college and life.*



# BACKGROUND



- Prior to 2001, Applied Materials Community Affairs engaged in traditional education grant making but was unable to determine significant results
- A study was commissioned that focused on student achievement in southern San Francisco Bay Area schools
- Results identified specific, high-need, low socio-economic communities with high percentages of students with low achievement
- Applied Materials shifted to a more strategic and targeted approach to serve high needs children in two specific, targeted communities - downtown and the Alum Rock neighborhood in San Jose - in order to maximize the impact of its investments and more accurately measure results

# CRITICAL ISSUES



- In the two largest school districts in Santa Clara County, the trend shows a steady increase in Latino enrollment, at 37% of all K-12 students in 2007-2008, the largest ethnic group in the county. San Jose Unified School District grew from 46% in 1993 to 51% in 2008, and East Side Union High School District increased from 37% in 1993 to 49% in 2008
- On average, students in the two communities served by the Education Initiative have the lowest scores on standardized tests among schools in Santa Clara County, as reported by API (Academic Performance Index) and AYP (Adequate Yearly Progress)
- In 2007, only 29% of Latino 12th graders graduated with the requirements for a state four-year college in Santa Clara County
- The Latino dropout rate in Santa Clara County was 31% in 2007, compared to a county-wide average of 17%

(Source: California Department of Education Dataquest)

# STRATEGY



- Stay focused on two high-need communities in San Jose
- Engage deeply and invest over a sustained period of time to achieve significant results
- Support the entire educational pathway - from preschool to high school completion and preparation for success in college
- Identify barriers to success along the pathway and support programs to overcome them
- Engage with partners at critical leverage points along the education pathway
- Measure results over time to assess effectiveness

# INVESTMENTS



- Investments in partners - Since 2001, Applied Materials has provided an average of \$1.5M annually in support for education in San Jose
  
- Support in addition to grant dollars:
  - Capacity building services of a half-time education expert to work with partners
  - Communication tools for partners to use to advance their work
  - Annual convenings to facilitate partners working together to leverage their efforts
  - Company facilities for professional development meetings
  - Support of partners' fundraising events

# Critical Leverage Points



AGE GRADE LEVEL	0-5 PRESCHOOL	5-11 ELEMENTARY SCHOOL	11-14 MIDDLE SCHOOL	14-18 HIGH SCHOOL
<b>CRITICAL LEVERAGE POINTS</b>	Entering Kindergarten ready to learn and succeed	Performing on grade level in English Language Arts & Math	Staying on academic track and aspiring to college	Multiple settings for academic success and access to higher education
<b>SUCCESS INDICATORS</b>	<ul style="list-style-type: none"> <li>▪ Early learning enrichment</li> <li>▪ Language development and pre-literacy experiences</li> <li>▪ Access to quality preschool</li> </ul>	<ul style="list-style-type: none"> <li>▪ Reading on grade level by Grade 3</li> <li>▪ Strong language development programs, especially for English language learners</li> </ul>	<ul style="list-style-type: none"> <li>▪ Student engagement in the learning process</li> <li>▪ Language proficiency</li> <li>▪ % Ready for algebra by the end of Grade 8</li> </ul>	<ul style="list-style-type: none"> <li>▪ Students enrolled in college prep courses</li> <li>▪ Alternatives and support to meet more learning styles and needs</li> <li>▪ College expectation</li> </ul>
<b>BARRIERS TO SUCCESS</b>	<ul style="list-style-type: none"> <li>▪ Lack of early learning knowledge</li> <li>▪ Shortage of books and learning materials</li> <li>▪ Unaffordable or unavailable preschool</li> </ul>	<ul style="list-style-type: none"> <li>▪ Lack of training and support for teachers to close achievement gap</li> <li>▪ Limited opportunities to develop language skills</li> </ul>	<ul style="list-style-type: none"> <li>▪ Social pressures that discourage academic achievement</li> <li>▪ Lack of support for students below grade level</li> </ul>	<ul style="list-style-type: none"> <li>▪ Student alienation from school</li> <li>▪ Negative social behaviors that derail education</li> <li>▪ Lack of role models</li> </ul>
<b>METRICS</b>	# Books in homes # Preschool spaces % Children ready for school	% Proficient in ELA (AYP) % Mathematics (AYP) API Scores % English Proficiency	% Ready for algebra API Scores	% Graduating with UC/CSU Requirements % Drop out rate

# Early Education Highlight:

## PARTNERSHIP FOR SCHOOL READINESS

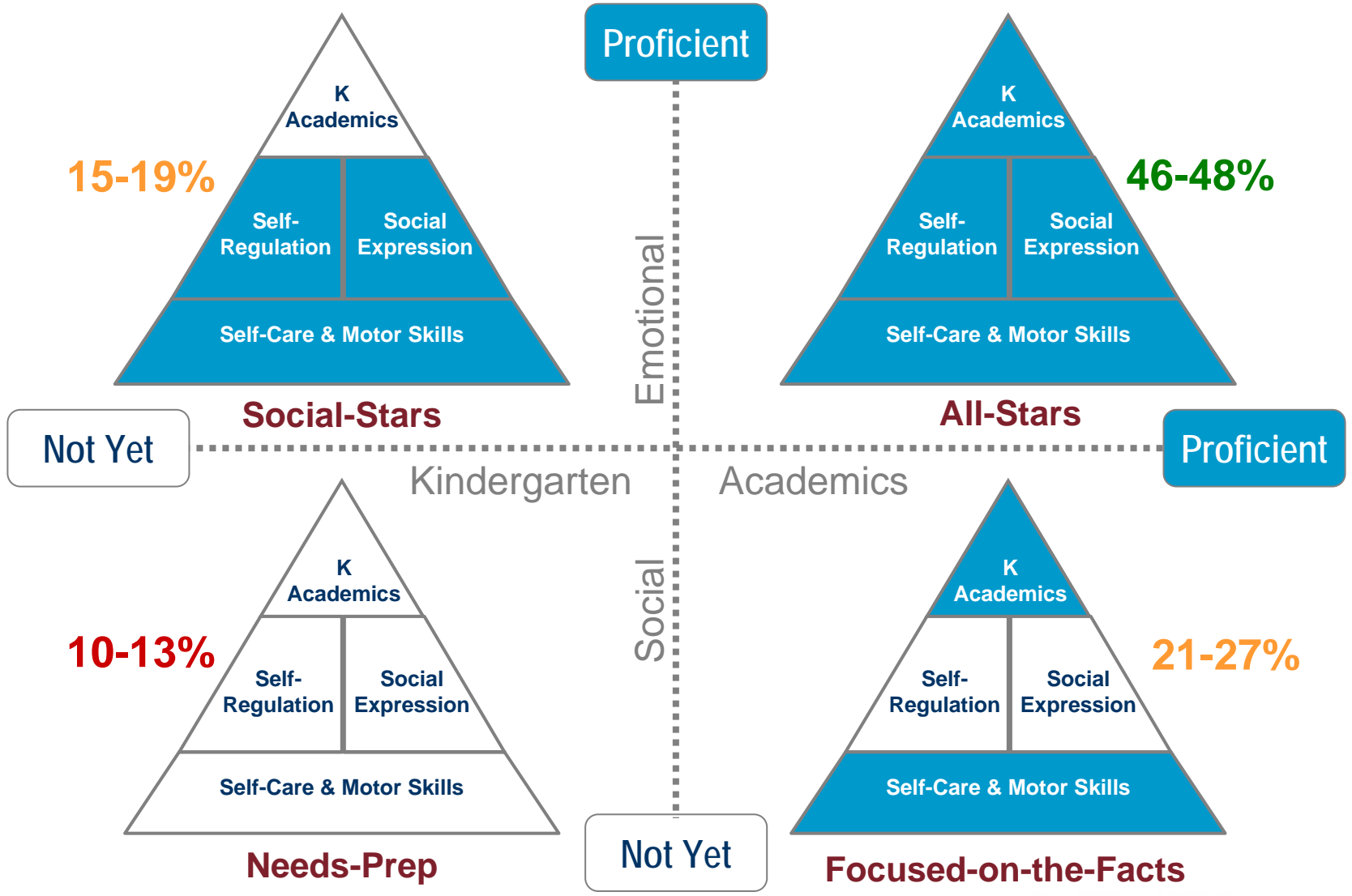


- Applied Materials is the leading corporate supporter of this Santa Clara County-wide partnership which is measuring the school readiness of children entering kindergarten
- The Partnership acts as a catalyst for the strategic use of resources to advance school readiness and school success for all children in the County through age eight
- In 2007, less than half (46-48%) of children in the County were fully prepared for kindergarten (Source: Assessment of School Readiness in Santa Clara County 2006, Applied Survey Research)

---

**LEVERAGE POINT: Increase the number of children entering kindergarten ready to learn and succeed**

# Santa Clara County Readiness



(Assessment of School Readiness in Santa Clara County 2006)

# Elementary School Highlight:

## DOWNTOWN SCHOOLS PARTNERSHIP



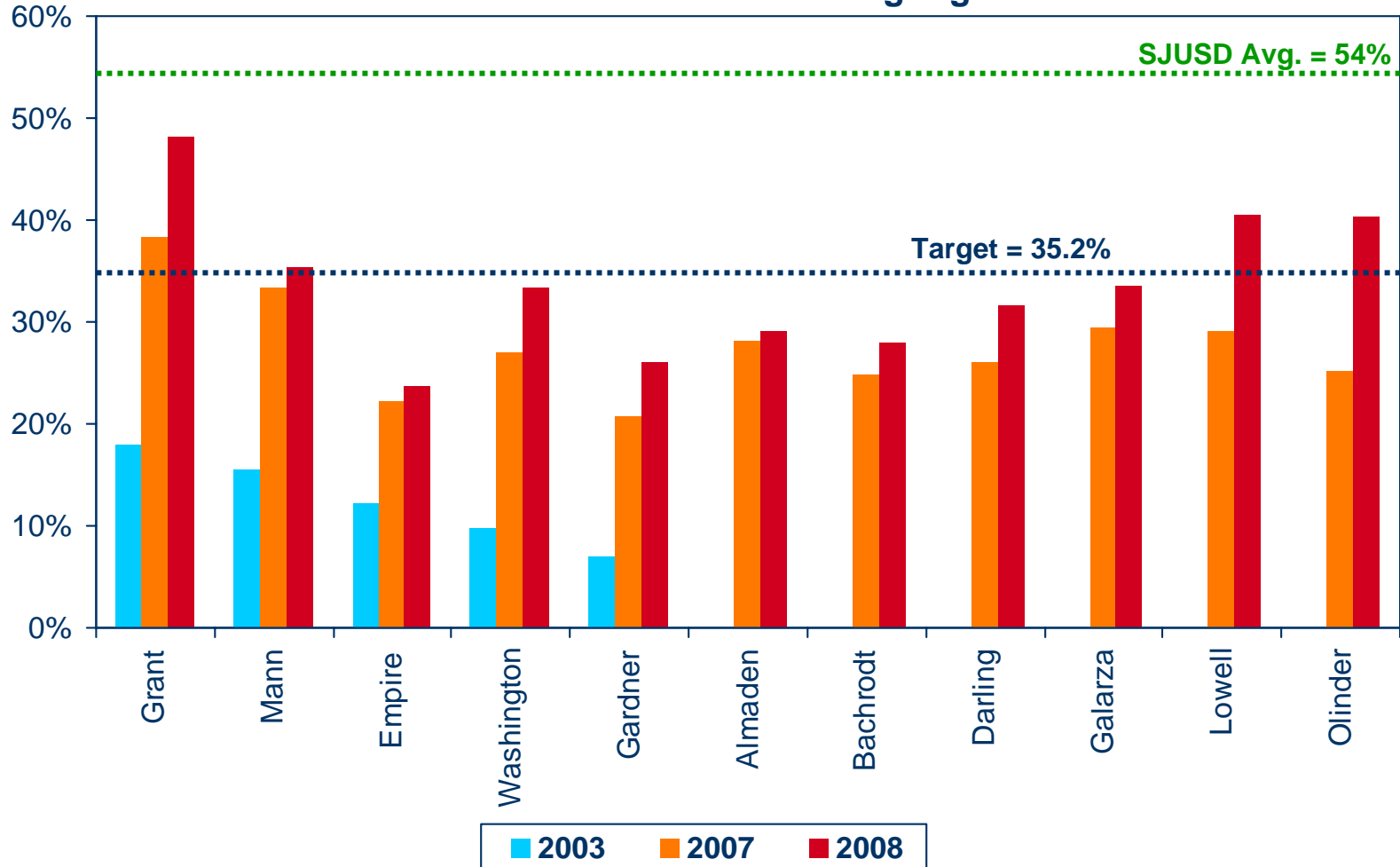
- In 2007 Applied Materials, San Jose Unified School District, and Partners in School Innovation committed to a three-year \$6M strategy to close the achievement gap in 11 low-performing downtown elementary schools. Applied Materials has pledged \$1.8M over three years
- Bold plan to confront a national crisis that is escalating for every large, urban district formalized with a Memorandum of Understanding, between Applied Materials, SJUSD, and Partners in School Innovation, a regional school reform organization
- Commitment to achieve a **double-digit rate of academic achievement improvement** at lowest performing schools
- Model public, non-profit, and private/corporate partnership a result of Applied Materials' past support of individual schools which is now coalesced into a systemic initiative with SJUSD
- Grants support teacher and principal coaching, leadership capacity building at the school level, dedicated professional time to analyze student data and design appropriate instruction, all focused on improving learning and measurable results

**LEVERAGE POINT: Increase the number of students performing on grade level**

# Downtown Elementary Schools Results



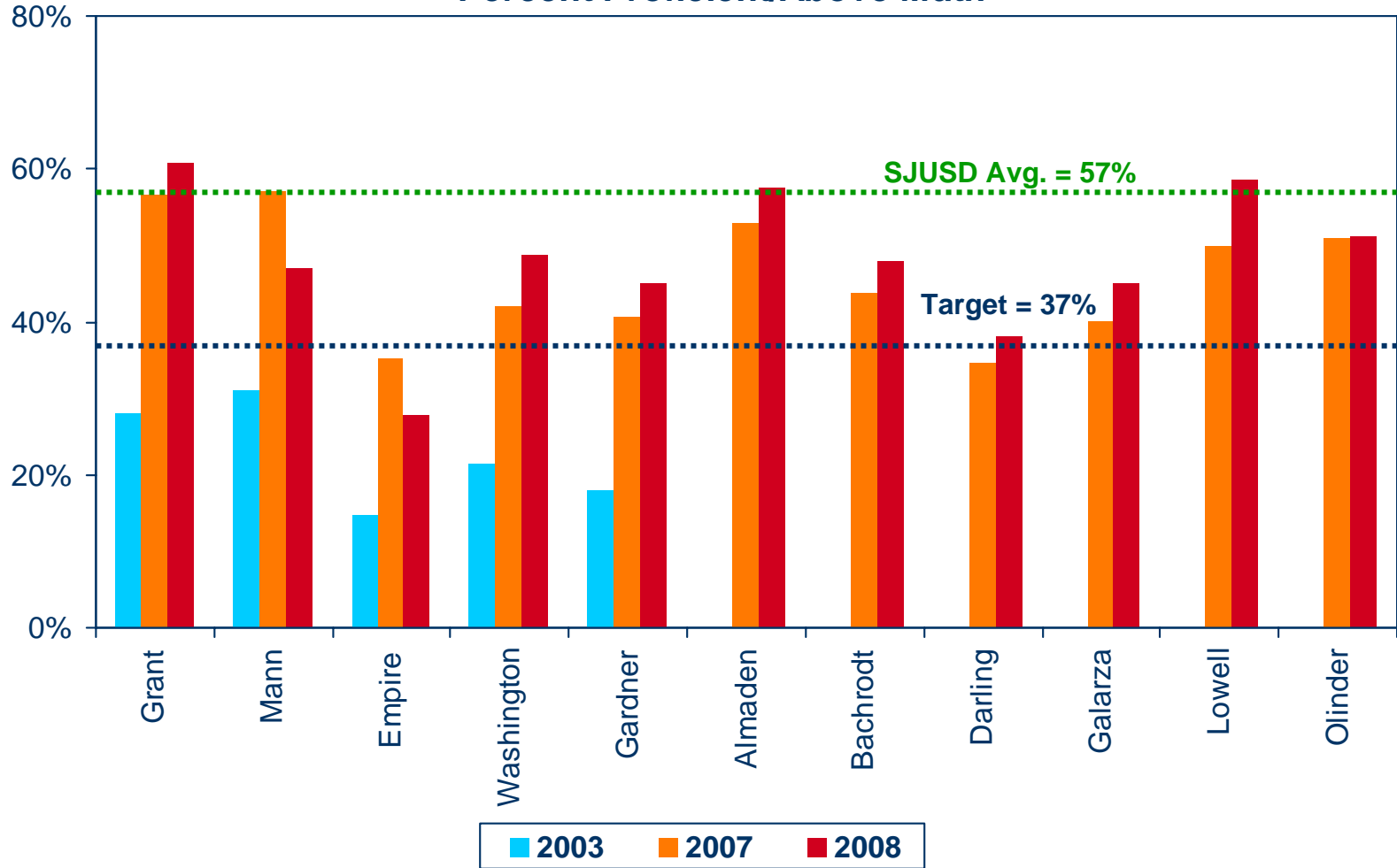
## Percent Proficient/Above Language Arts



# Downtown Elementary Schools Results



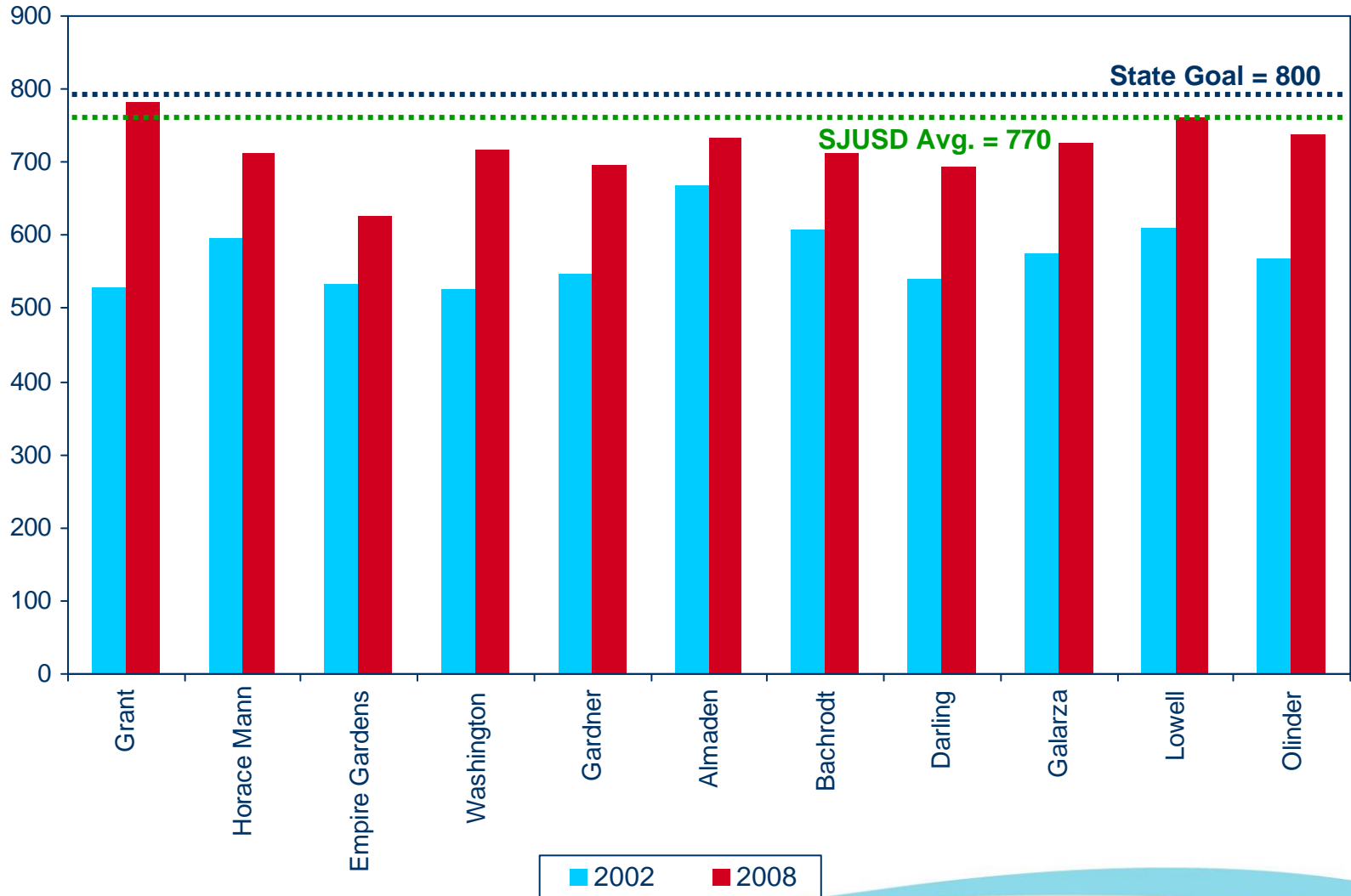
## Percent Proficient/Above Math



# Downtown Elementary Schools Results



## ACADEMIC PERFORMANCE INDEX COMPARISON



# Downtown Elementary Schools Results



## FIRST YEAR ACCOMPLISHMENTS

- Two of the schools achieved double digit growth in one year in English Language Arts towards closing the achievement gap school-wide:
  - Lowell - increased more than 10 percentage points
  - Olinder - increased just under 15 percentage points
  
- Six more schools achieved double digit growth in closing the achievement gap at specific grade levels:
  - Anne Darling
  - Empire Gardens
  - Galarza
  - Grant
  - Horace Mann
  - Washington

# Middle School Highlight:

## BREAKTHROUGH



- Applied Materials introduced the nationally acclaimed middle school program to San Jose in 2002
- Breakthrough Silicon Valley is a six-year comprehensive college readiness program that serves motivated middle school students, who face a variety of socio-economic factors that put them at risk of school failure or not attending college
- Breakthrough Silicon Valley directly serves students at Hoover and Burnett middle schools
- Breakthrough Silicon Valley's student demographics:
  - 92% first generation to go to college
  - 61% receive free/reduced lunch
  - 63% English is their second language
  - 76% Latino ( 90% students of color)
- In 2007, Breakthrough Silicon Valley became a new non-profit entity in order to attract additional funds and serve more students throughout Silicon Valley

**LEVERAGE POINT: Keep students on academic track and aspiring to college**

# Breakthrough Silicon Valley Results



Higher Math Preparation	85% of 8th grade students are taking Algebra I (compared to 27% nationally)
On Track For College	93% are prepared for and enrolled in college prep courses in high school
College Aspiration	90% participate in college tours before entering 10th grade
Motivation	99% are motivated to do well in school

(Source: Data reported by Breakthrough Silicon Valley 2008)

# East San Jose Schools Highlight:

## SMALL SCHOOLS OF CHOICE

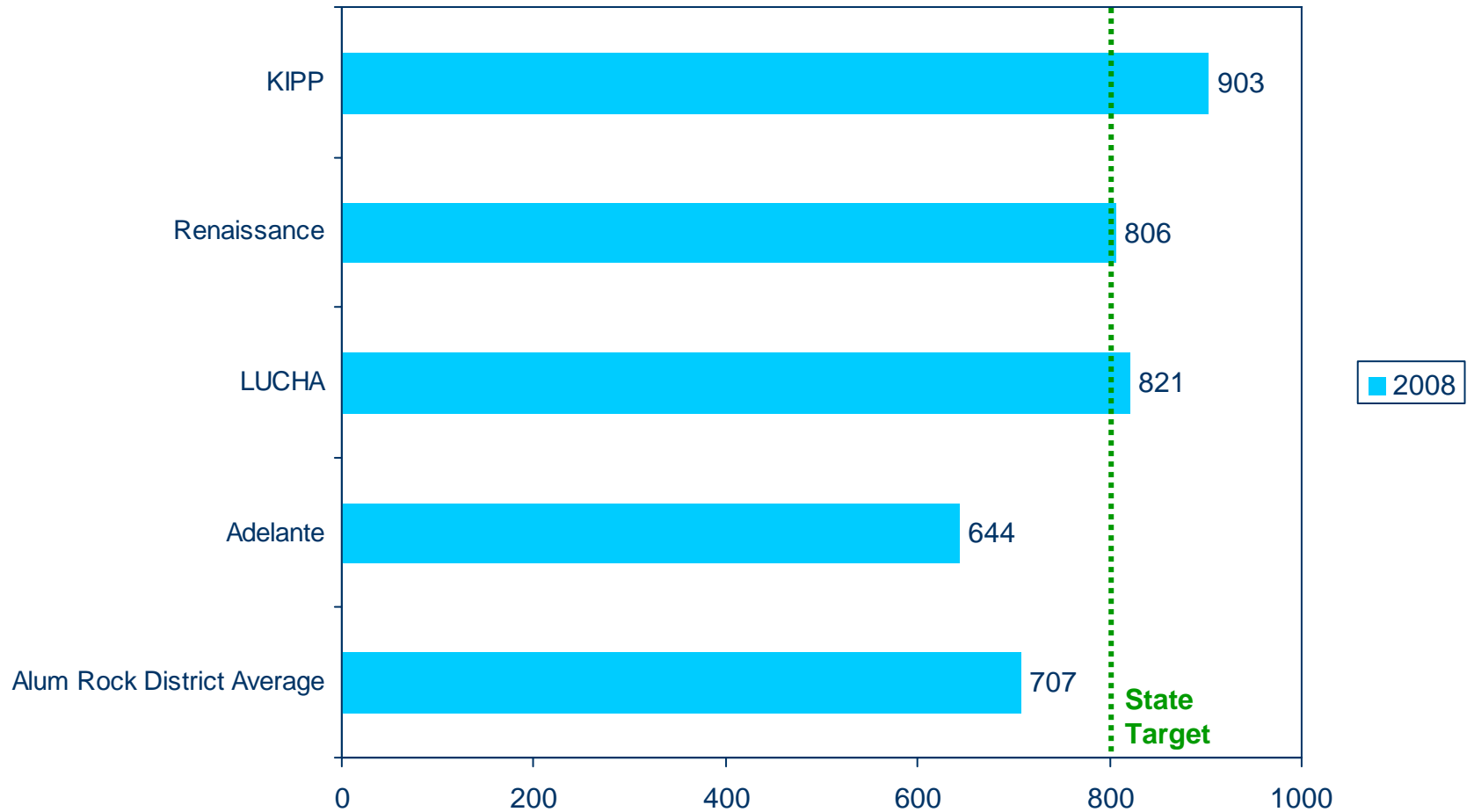


- Applied Materials is piloting a different approach on the east side of San Jose that directly supports parents and the community in an effort to provide more options and improve academic achievement at the elementary, middle, and high school levels:
  - PACT and ACE Public Schools network support the three small autonomous schools - two elementary and one middle school - and have just opened a new charter middle school
  - KIPP Heartwood Academy middle school, one of 66 KIPP schools nationwide, has just graduated its first class of 8th graders and is opening a high school for the '08-'09 school year
  - Leadership Public Schools San Jose, a charter high school in the East Side Union High School District, had an API gain of 126 points - the highest of any urban high school in CA
- Grants have supported teacher and principal coaching, dedicated professional development time to refine instructional strategies, and lengthening of the school day and year

---

**LEVERAGE POINT: Increase the number of students performing on grade level**

# East Side Small Schools Results



(Source: California Department of Education Dataquest)



# High School Highlight:

## DOWNTOWN COLLEGE PREP

- Applied Materials has supported Downtown College Prep since its establishment in 2000 as the first charter high school in Silicon Valley
- DCP prepares underachieving students who will be the first in their families to go to and thrive at four-year universities
- Grants have supported the development of specialized courses in literacy and mathematics to augment the college prep curriculum, the first graduation celebration, outreach to first year college students, and development of expansion feasibility and a business plan
- In order to share the results and benefit additional students and schools, Applied Materials is now supporting the DCP Dissemination of Best Practices
- As of 2008, DCP has graduated 224 students, with 98% accepted to four year colleges and 86% on track to earn their degree in four-year degree. In May 2008, DCP celebrated the college graduation of 22% of its first graduating class of 2004

**LEVERAGE POINT: Increase the number of students graduating and prepared for college**

(Source: Data reported by Downtown College Prep)

# Downtown College Prep Results



Latino high school graduates completing courses required for a four-year college	2007 Results % of Latino graduates with UC/CSU required courses
Downtown College Prep	88.1%
San Jose Unified School District	49.5% (up from 43.6% in 2002)
East Side Union High School District	25.3% (up from 13.5% in 2002)
Santa Clara County	29.4% (up from 21.3% in 2002)
California	25.2% (up from 21.8% in 2002)

(Source: California Department of Education Dataquest)

# 2007-2008 Grants Summary



LEVERAGE POINT	PROGRAM	PURPOSE	GRANT
Early Education	Family of Readers San Jose Unified	Matching grant for federal program to increase number of books and provide parent education in support of early learning	\$2,475
Early Education	Bring Me a Book Foundation	Provide book libraries for early grades and parent early literacy education	\$41,285
Early Education	Partnership for School Readiness	Support county-wide assessment of school readiness and advocate for advances in school readiness and success	\$20,000
Elementary Education	Gardner Professional Development School	Build capacity of classroom teachers, resource teachers, and school administrators through summer institute for low-achieving students	\$50,000
Elementary Education	San Jose Unified & Partners in School Innovation	Support systemic initiative to close the achievement gap at lowest performing schools in the downtown area	\$300,000 \$300,000
Elementary Education	YES Reading	Support volunteers tutoring primary grade students on early literacy	\$15,000
Elem/Middle School	ACE Public Schools Network	Support small autonomous schools and new charter middle school	\$125,000
Middle School	Breakthrough San Jose	Support academic skills and aspiration for success in college	\$250,000
Middle School	KIPP Heartwood Academy	Support rigorous middle school and develop literacy skills of teachers	\$25,000
High School	Downtown College Prep	Disseminate best practices of charter high school serving students who will be first in their families to attend a 4-year college	\$125,000
High School	Leadership Public School	Support charter high school establishment in east San Jose	\$25,000
High School	PACT	Support community effort to improve education and create a college-bound community	\$75,000
High School	Summer Search	Support low-income students through life-changing summer experiences, year-round mentoring, college advising, and lasting network	\$10,000
Teacher Development	Teach for America	Support placement and support of high-quality new teachers	\$100,000
Teacher Development	New Teacher Center	Support mentoring and development of beginning teachers	\$25,000

**TOTAL \$1,488,760**



think it. apply it.™

APPLIED MATERIALS®